

# SHAW'S PLAZA

15 STATE ROAD | DARTMOUTH, MA 02747

AVAILABLE 1,422 SF - 2,535 SF

ANCHORED BY

**shaws**



## PROPERTY INFORMATION

- GLA 81,201 sf
- Center recently renovated
- Located at intersection of Route 6 (State Road / Kempton Street) and Commonwealth Avenue.
- 23,000 vehicles per day along Route 6

## AVAILABLE SPACE

- Space 03: 2,535 SF
- Space 04: 1,422 SF

## AREA DEMOGRAPHICS

2025 DEMOGRAPHICS	1 MILE	3 MILE	5 MILE
POPULATION	10,321	100,361	144,888
MEDIAN HH INC	\$83,504	\$62,369	\$71,942
AVERAGE HH INC	\$100,921	\$82,610	\$94,159



**CHARTER  
REALTY**

[www.CharterRealty.com](http://www.CharterRealty.com)

FOR MORE INFORMATION CONTACT:

DAN ZELSON | 203.227.2922 | [Dan@CharterRealty.com](mailto:Dan@CharterRealty.com)



# SHAW'S PLAZA

15 STATE ROAD | DARTMOUTH, MA 02747

## TENANTS / AVAILABILITY

#	TENANT	Sq. Ft.			
01	Shaw's Supermarket	66,305	05	Laundromat	2,500
02	Anytime Fitness	4,800	06	Cozy Nails	1,560
03	Available	2,535	07	Zully's Wine & Spirits	1,742
04	Available	1,420	08	Mechanics Cooperative Bank	3,280



### CHARTER REALTY

Information contained in this document has been reviewed and approved by Charter Realty; however, errors sometimes occur. Charter disclaims any warranty of any kind, expressed or implied, as to any matter whatsoever relating to this service. In no event shall Charter be liable for any indirect, special, incidental or consequential damages arising out of any use of or reliance on any content or materials contained herein.



# SHAW'S PLAZA

15 STATE ROAD | DARTMOUTH, MA 02747

## TRADE AREA DEMOGRAPHICS

### 1 MILE RADIUS:



Total Population: **10,321**

Households: **4,184**

Daytime Population: **6,993**

Median Age: **43.1**



Average Household Income: **\$100,921**

Median Household Income: **\$83,504**

### 3 MILE RADIUS:



Total Population: **100,361**

Households: **40,337**

Daytime Population: **72,394**

Median Age: **37.5**



Average Household Income: **\$82,610**

Median Household Income: **\$62,369**

### 5 MILE RADIUS:



Total Population: **144,888**

Households: **58,892**

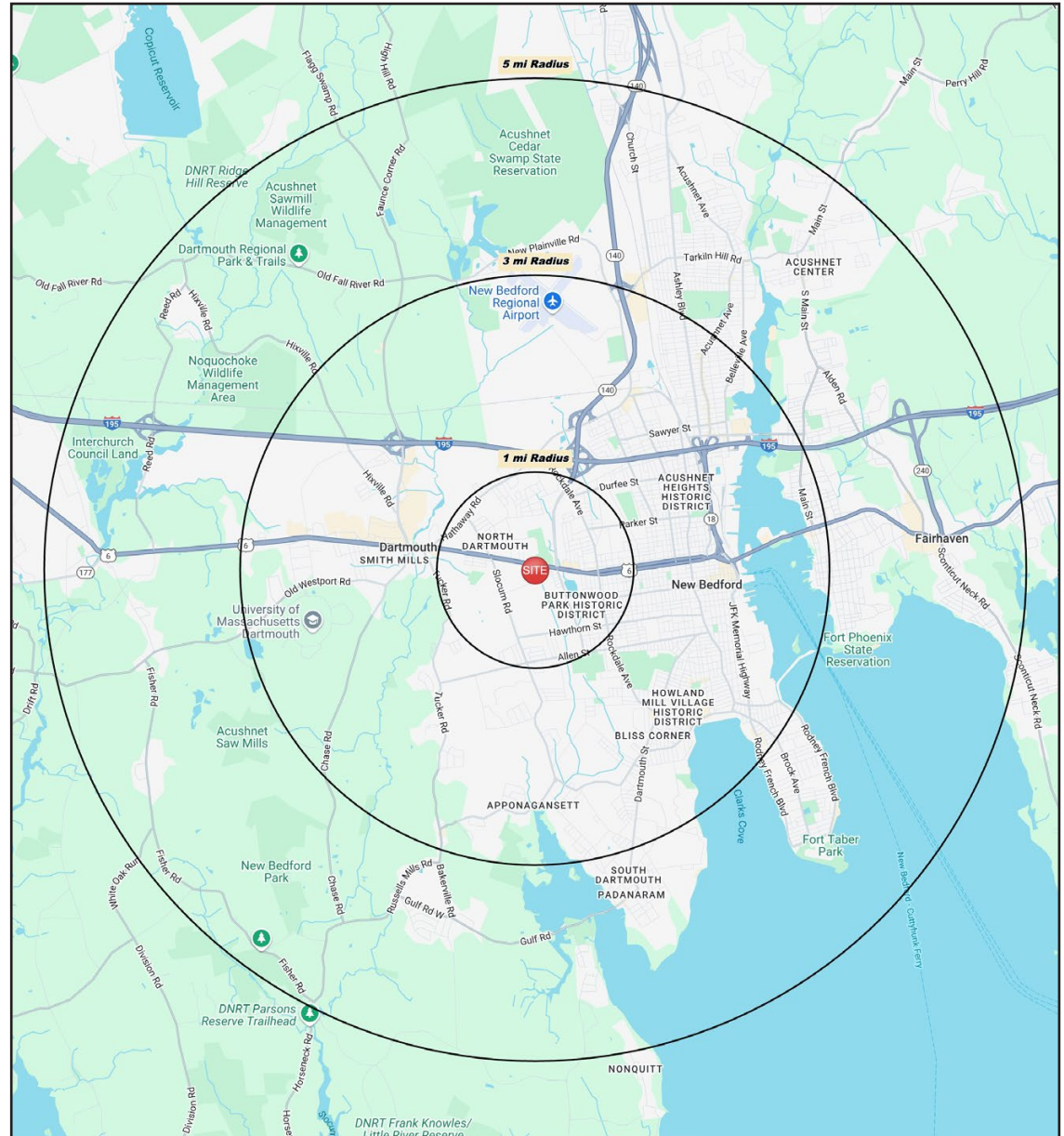
Daytime Population: **106,336**

Median Age: **39.5**



Average Household Income: **\$94,159**

Median Household Income: **\$71,942**



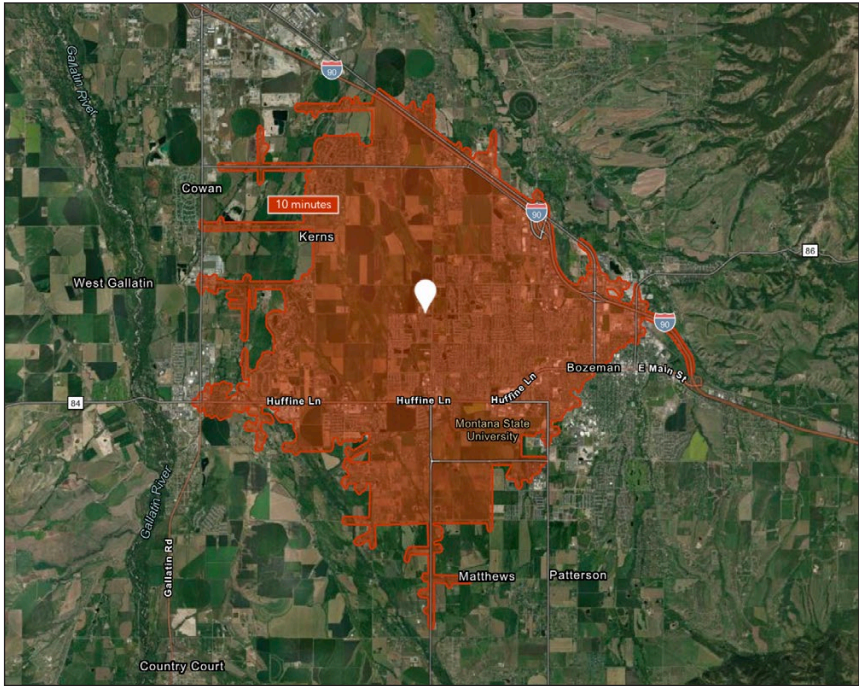
#### CHARTER REALTY

Information contained in this document has been reviewed and approved by Charter Realty; however, errors sometimes occur. Charter disclaims any warranty of any kind, expressed or implied, as to any matter whatsoever relating to this service. In no event shall Charter be liable for any indirect, special, incidental or consequential damages arising out of any use of or reliance on any content or materials contained herein.

# SHAW'S PLAZA

15 STATE ROAD | DARTMOUTH, MA 02747

10 MINUTE DRIVE TIME



## KEY FACTS

45,387

Population

31.0

Median Age

\$89,889

Median Household Income

43,452

Daytime Population

## TAPESTRY SEGMENTS

Modern Minds

6,069 households

### Socioeconomic Traits

Primarily in city outskirts and suburbs, this fast-growing segment includes educated young adults, many foreign-born. They work in diverse industries, earn upper-tier incomes, and live in newer homes with multiple vehicles.

### Household Types

Married couples;  
singles living alone

### Typical Housing

Multi-Units

College Towns

5,496 households

### Socioeconomic Traits

These university-focused communities across metros and suburbs include many students, recent immigrants, and degree holders. Most work part-time nearby in service or government jobs, rent multifamily or campus housing, and live in both large and smaller cities.

### Household Types

Singles living alone; singles with  
roommates

### Typical Housing

Multi-Units

City Greens

2,743 households

### Socioeconomic Traits

Residents in this segment are educated, dual-income earners living in metro areas. They own older homes, often single-family or attached, with low vacancies despite above-average rents and moderate home values.

### Household Types

Married couples;  
singles living alone

### Typical Housing

Single Family

## TOTAL RETAIL SALES

Includes F&B



\$518,414,394

## EDUCATION

Bachelor's Degree  
or Higher



57%

## OWNER OCCUPIED HOME VALUE

Average



\$831,328

## ANNUAL HOUSEHOLD SPENDING

\$4,260

Eating  
Out

\$2,573

Apparel &  
Services

\$7,520

Groceries

\$251

Computer &  
Hardware

\$7,374

Health  
Care



### CHARTER REALTY

Information contained in this document has been reviewed and approved by Charter Realty; however, errors sometimes occur. Charter disclaims any warranty of any kind, expressed or implied, as to any matter whatsoever relating to this service. In no event shall Charter be liable for any indirect, special, incidental or consequential damages arising out of any use of or reliance on any content or materials contained herein.



# SHAW'S PLAZA

15 STATE ROAD | DARTMOUTH, MA 02747



CHARTER REALTY

Information contained in this document has been reviewed and approved by Charter Realty; however, errors sometimes occur. Charter disclaims any warranty of any kind, expressed or implied, as to any matter whatsoever relating to this service. In no event shall Charter be liable for any indirect, special, incidental or consequential damages arising out of any use of or reliance on any content or materials contained herein.



# SHAW'S PLAZA

15 STATE ROAD | DARTMOUTH, MA 02747



## CHARTER REALTY

Information contained in this document has been reviewed and approved by Charter Realty; however, errors sometimes occur. Charter disclaims any warranty of any kind, expressed or implied, as to any matter whatsoever relating to this service. In no event shall Charter be liable for any indirect, special, incidental or consequential damages arising out of any use of or reliance on any content or materials contained herein.



# SHAW'S PLAZA

15 STATE ROAD | DARTMOUTH, MA 02747



## CHARTER REALTY

Information contained in this document has been reviewed and approved by Charter Realty; however, errors sometimes occur. Charter disclaims any warranty of any kind, expressed or implied, as to any matter whatsoever relating to this service. In no event shall Charter be liable for any indirect, special, incidental or consequential damages arising out of any use of or reliance on any content or materials contained herein.