

MEDWAY COMMONS

65 MAIN STREET | MEDWAY, MA 02053

AVAILABLE 5,850 SF - SPACE IS DIVISIBLE

ANCHORED BY

shaws

CVS



PROPERTY INFORMATION

- GLA 120,00 sf
- Traffic light on Route 109
- Average Daily Traffic: 15,000 vpd
- Suburban grocery anchored shopping center located at signaled intersection along primary local corridor. Best in class tenants in affluent community.

AVAILABLE SPACE

- Available 5,850 sf - space is divisible

AREA DEMOGRAPHICS

2025 DEMOGRAPHICS	1 MILE	3 MILE	5 MILE
POPULATION	4,335	30,475	73,052
MEDIAN HH INC	\$171,402	\$174,157	\$166,687
AVERAGE HH INC	\$206,061	\$207,493	\$202,302



www.CharterRealty.com

FOR MORE INFORMATION CONTACT:

DAN ZELSON | 203.227.2922 | Dan@CharterRealty.com

MEDWAY COMMONS

65 MAIN STREET | MEDWAY, MA 02053

TENANTS / AVAILABILITY

#	TENANT	Sq. Ft.
01	CVS	13,013
A1	Jersey Mike's	1,114
A2	Chipotle	2,495
BC - 101	Liquor World	6,000
BC - 102	Available - space is divisible	5,850
BC - 104	California Nail	1,500
BC - 105	Supreme Pizza	1,500
BC - 106	Brightpath	12,600
D-101	Orange Theory Fitness	3,425
D -104	Starbucks	1,500
MED - 1	Shaws	68,358



CHARTER REALTY

Information contained in this document has been reviewed and approved by Charter Realty; however, errors sometimes occur. Charter disclaims any warranty of any kind, expressed or implied, as to any matter whatsoever relating to this service. In no event shall Charter be liable for any indirect, special, incidental or consequential damages arising out of any use of or reliance on any content or materials contained herein.

MEDWAY COMMONS

65 MAIN STREET | MEDWAY, MA 02053

TRADE AREA DEMOGRAPHICS

1 MILE RADIUS:



Total Population: **4,335**

Households: **1,624**

Daytime Population: **3,899**

Median Age: **42.3**



Average Household Income: **\$206,061**

Median Household Income: **\$171,402**

3 MILE RADIUS:



Total Population: **30,475**

Households: **11,075**

Daytime Population: **14,783**

Median Age: **43.3**



Average Household Income: **\$207,493**

Median Household Income: **\$174,157**

5 MILE RADIUS:



Total Population: **73,052**

Households: **26,567**

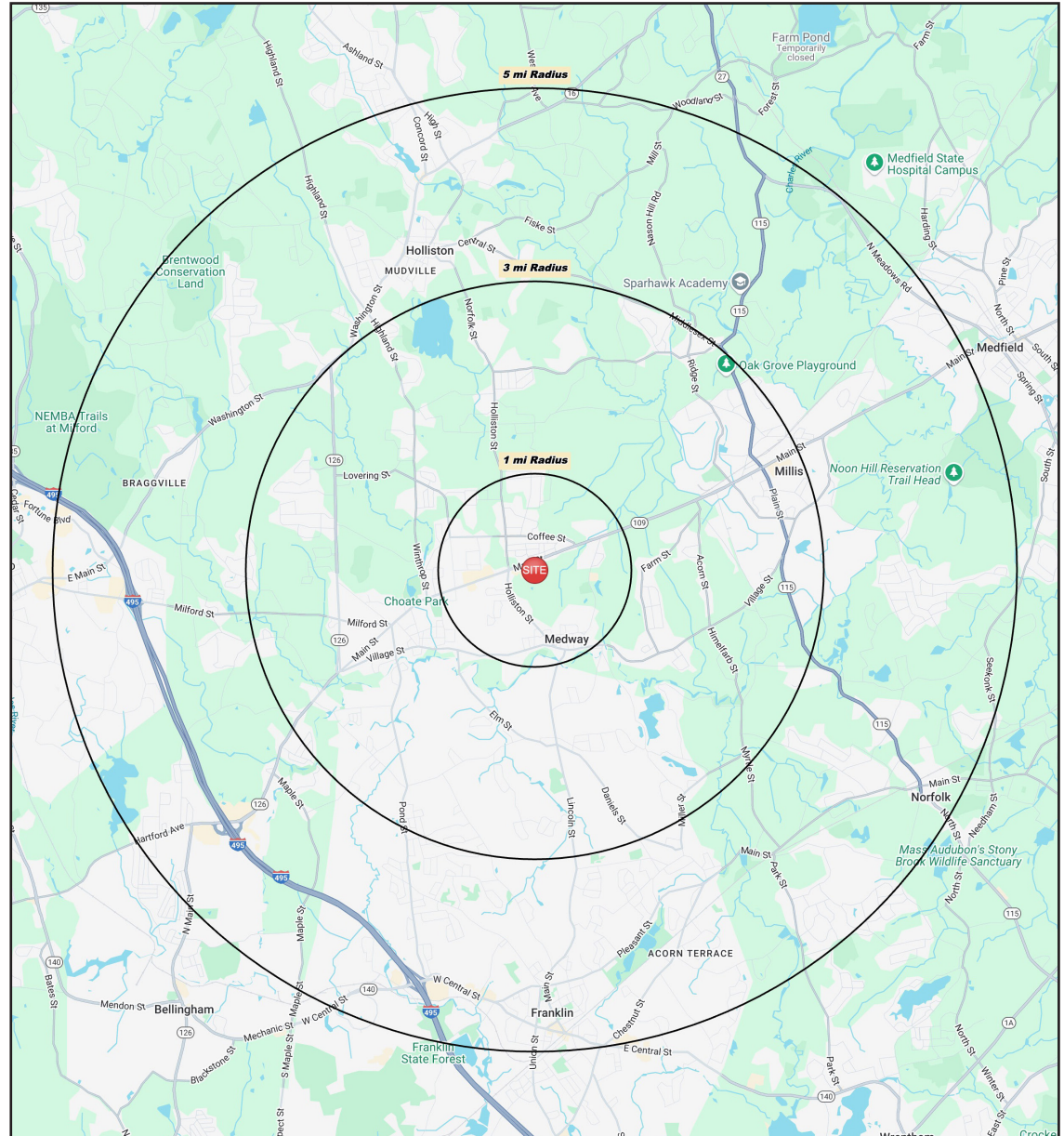
Daytime Population: **51,422**

Median Age: **42.5**



Average Household Income: **\$202,302**

Median Household Income: **\$166,687**



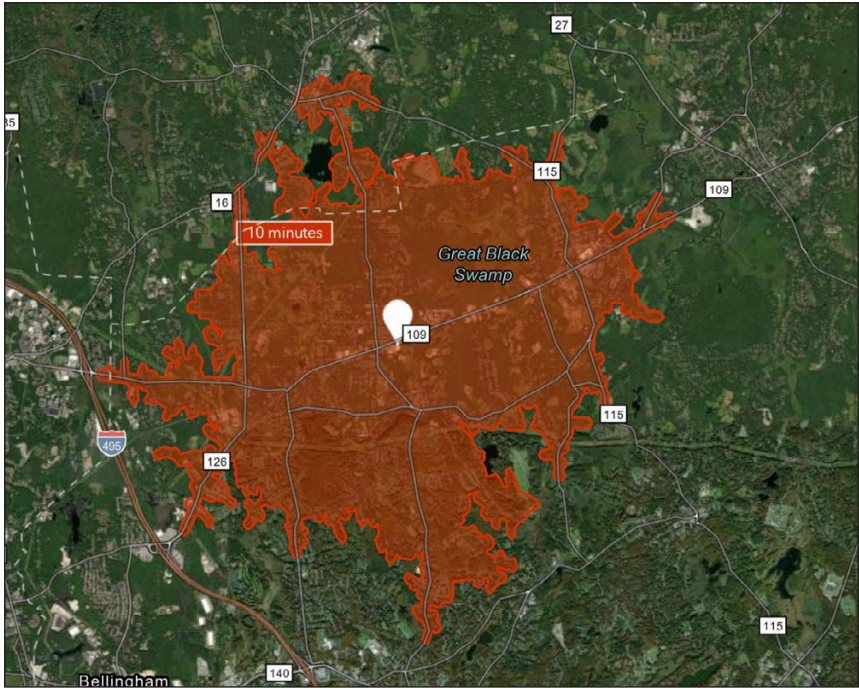
CHARTER REALTY

Information contained in this document has been reviewed and approved by Charter Realty; however, errors sometimes occur. Charter disclaims any warranty of any kind, expressed or implied, as to any matter whatsoever relating to this service. In no event shall Charter be liable for any indirect, special, incidental or consequential damages arising out of any use of or reliance on any content or materials contained herein.

MEDWAY COMMONS

65 MAIN STREET | MEDWAY, MA 02053

10 MINUTE DRIVE TIME



KEY FACTS

26,182

Population

\$171,940

Median Household Income

43.5

Median Age

20,133

Daytime Population

TAPESTRY SEGMENTS

Top Tier 2,329 households	Savvy Suburbanites 1,990 households	Neighborhood Spirit 1,566 households
Socioeconomic Traits Concentrated in New England, Mid-Atlantic, and Pacific suburbs, these affluent, educated married couples often have children in private schools. Many are executives or business owners, with high net worth and single-family homes.	Socioeconomic Traits Concentrated in New England and Mid-Atlantic suburbs, these mostly owner-occupied, single-family homes house professional families with children. Combined incomes and investments place households in middle to upper tiers with high net worth.	Socioeconomic Traits These older, multigenerational suburban households own high-value homes, often built before 1970. Residents work skilled or government jobs, commute frequently, and may earn income from investments or rentals.
Household Types Married couples	Household Types Married couples	Household Types Married couples
Typical Housing Single Family	Typical Housing Single Family	Typical Housing Single Family

TOTAL RETAIL SALES

Includes F&B



\$457,065,522

EDUCATION

Bachelor's Degree or Higher



63%

OWNER OCCUPIED HOME VALUE

Average



\$779,780

ANNUAL HOUSEHOLD SPENDING

\$7,666

Eating Out

\$4,417

Apparel & Services

\$12,954

Groceries

\$412

Computer & Hardware

\$13,441

Health Care

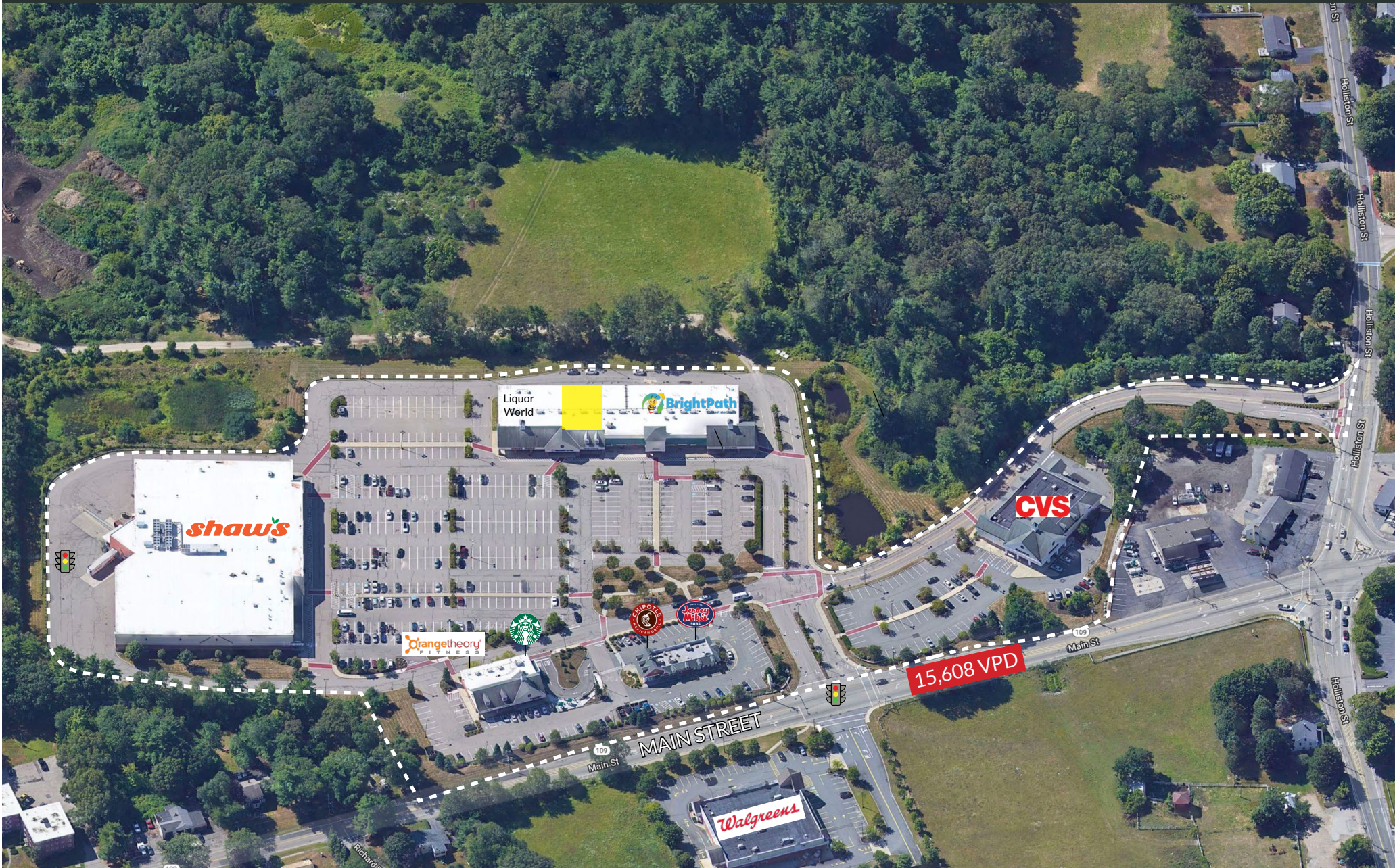


CHARTER REALTY

Information contained in this document has been reviewed and approved by Charter Realty; however, errors sometimes occur. Charter disclaims any warranty of any kind, expressed or implied, as to any matter whatsoever relating to this service. In no event shall Charter be liable for any indirect, special, incidental or consequential damages arising out of any use of or reliance on any content or materials contained herein.

MEDWAY COMMONS

65 MAIN STREET | MEDWAY, MA 02053



CHARTER REALTY

Information contained in this document has been reviewed and approved by Charter Realty; however, errors sometimes occur. Charter disclaims any warranty of any kind, expressed or implied, as to any matter whatsoever relating to this service. In no event shall Charter be liable for any indirect, special, incidental or consequential damages arising out of any use of or reliance on any content or materials contained herein.

MEDWAY COMMONS

65 MAIN STREET | MEDWAY, MA 02053



CHARTER REALTY
Information contained in this document has been reviewed and approved by Charter Realty; however, errors sometimes occur. Charter disclaims any warranty of any kind, expressed or implied, as to any matter whatsoever relating to this service. In no event shall Charter be liable for any indirect, special, incidental or consequential damages arising out of any use of or reliance on any content or materials contained herein.

MEDWAY COMMONS

65 MAIN STREET | MEDWAY, MA 02053



CHARTER REALTY

Information contained in this document has been reviewed and approved by Charter Realty; however, errors sometimes occur. Charter disclaims any warranty of any kind, expressed or implied, as to any matter whatsoever relating to this service. In no event shall Charter be liable for any indirect, special, incidental or consequential damages arising out of any use of or reliance on any content or materials contained herein.