

CENTER DELIVERY FOR LATE 2025

THE SHOPS AT STONEBRIDGE

JOIN WHOLE FOODS, TJ MAXX, BARNES & NOBLE, BIRDCODE, CHIPOTLE, SHAKE SHACK, STARBUCKS

AVAILABLE 2,208 SF - 2,354 SF | ONE SITE LEFT FOR SALE - 1.3 ACRES



CHESHIRE, CT

TOWN OF CHESHIRE, NEW HAVEN COUNTY, CONNECTICUT

107 ACRE MIXED USE PROJECT

THE SHOPS AT STONEBRIDGE

UNDER CONSTRUCTION

PROPERTY INFORMATION

New Development on 107 Acres.

...

Easy access on / off of I-84 & I-691, with ideal location right off Exit 3 of I-691.

...

Two signalized entrances to the center.

...

Retail Pads Available, Adult Housing Opportunity / Office Opportunity & Hotel coming soon.

...

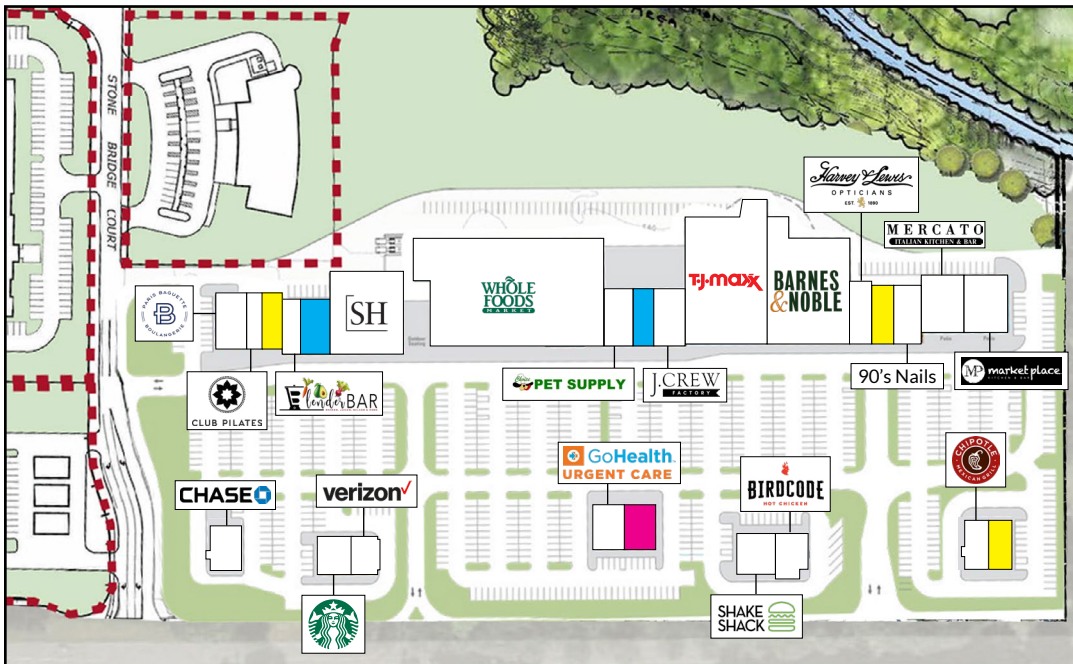
Retail Shopping Center of 136,000sf.

...

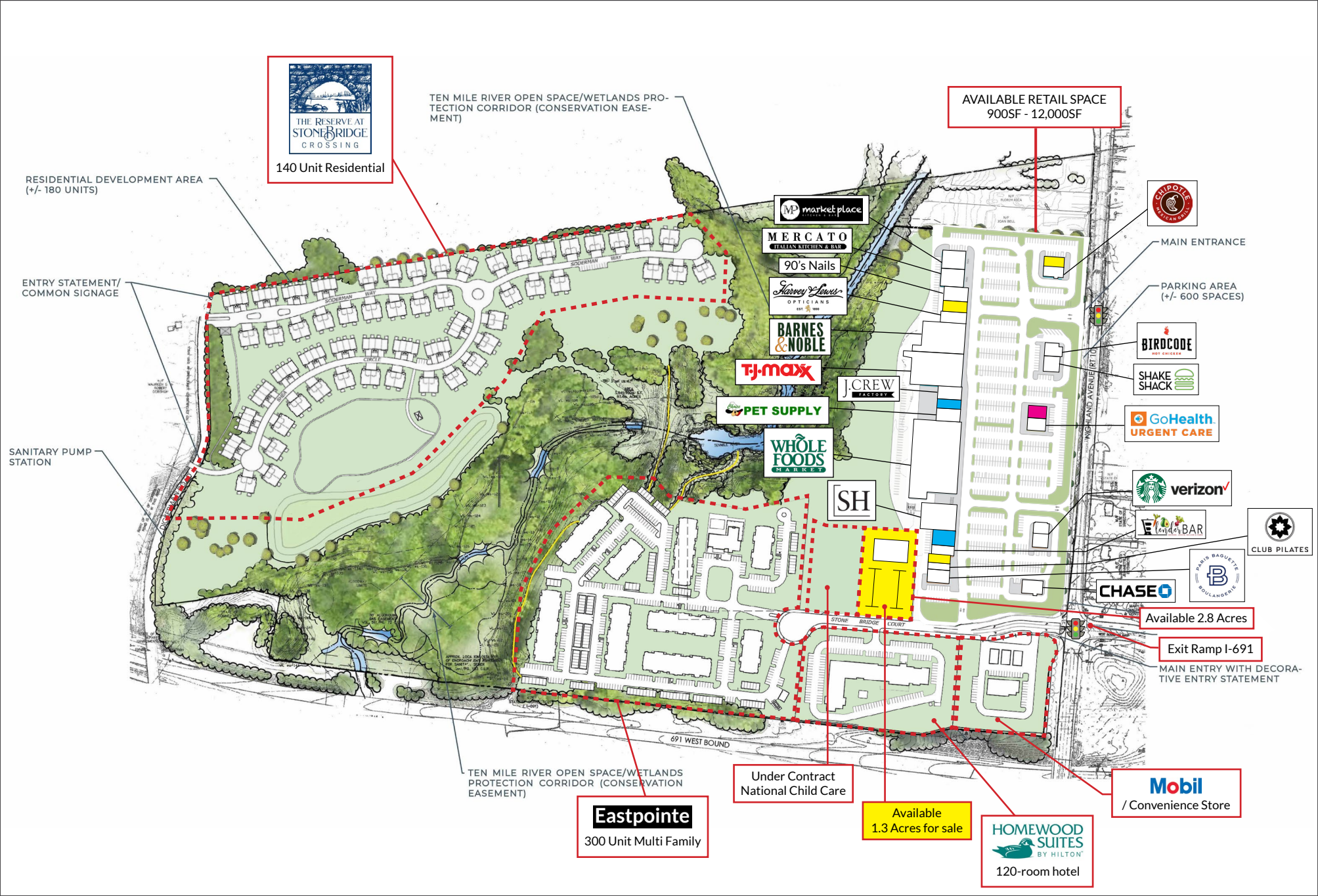
Traffic Count: I-691: 49,499 vpd; Highland Ave: 12,894 vpd.

AVAILABLE SPACE

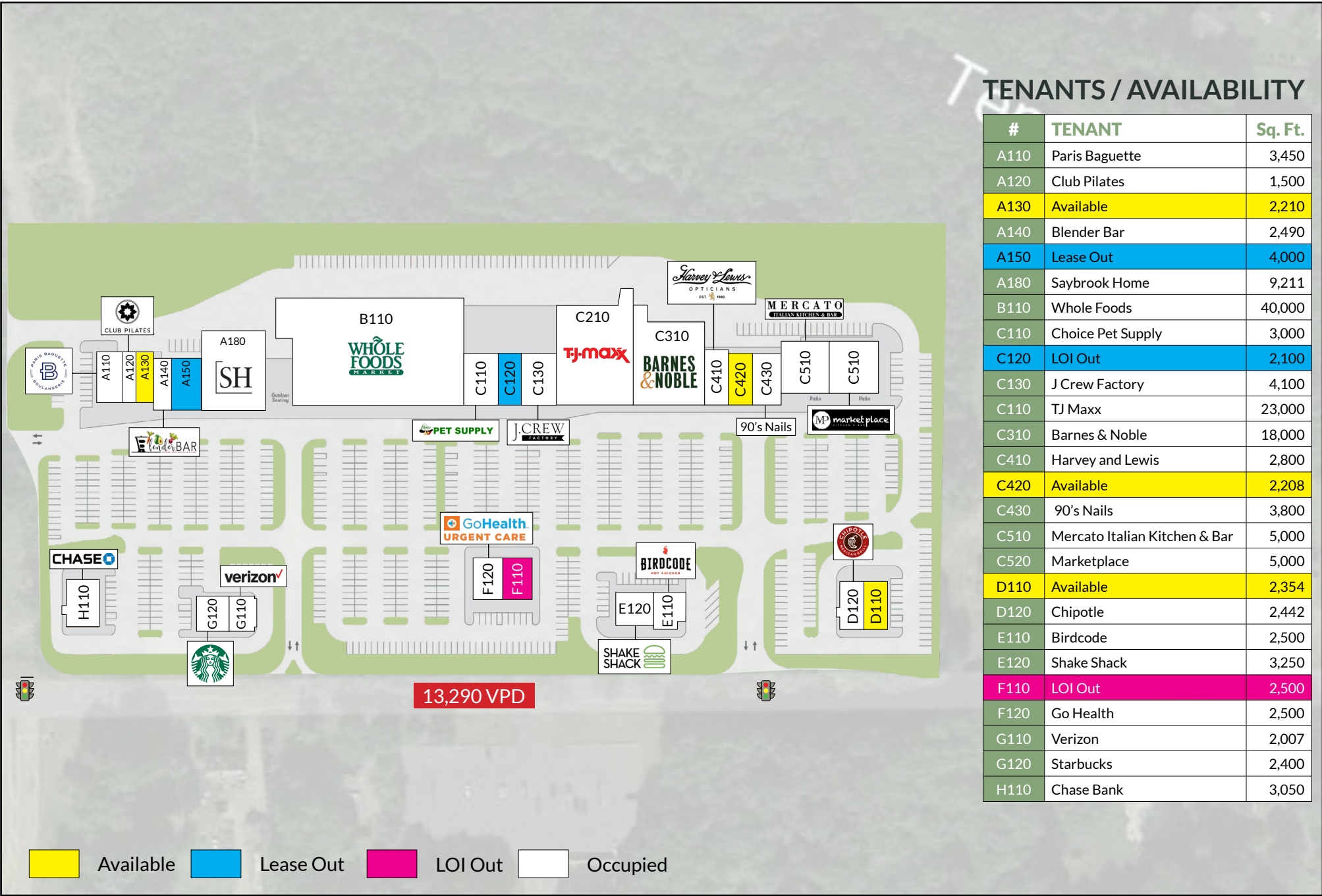
Available: 2,208sf - 2,354sf.



OVERALL SITE PLAN



PROPERTY LEASING PLAN - RETAIL



TRADE AREA DEMOGRAPHICS

1 MILE RADIUS:



Total Population: **2,196**
Households: **737**
Daytime Population: **3,526**
Median Age: **46.1**



Average Household Income: **\$137,501**
Median Household Income: **\$106,307**

3 MILE RADIUS:



Total Population: **31,708**
Households: **11,696**
Daytime Population: **29,478**
Median Age: **42.2**



Average Household Income: **\$164,752**
Median Household Income: **\$126,954**

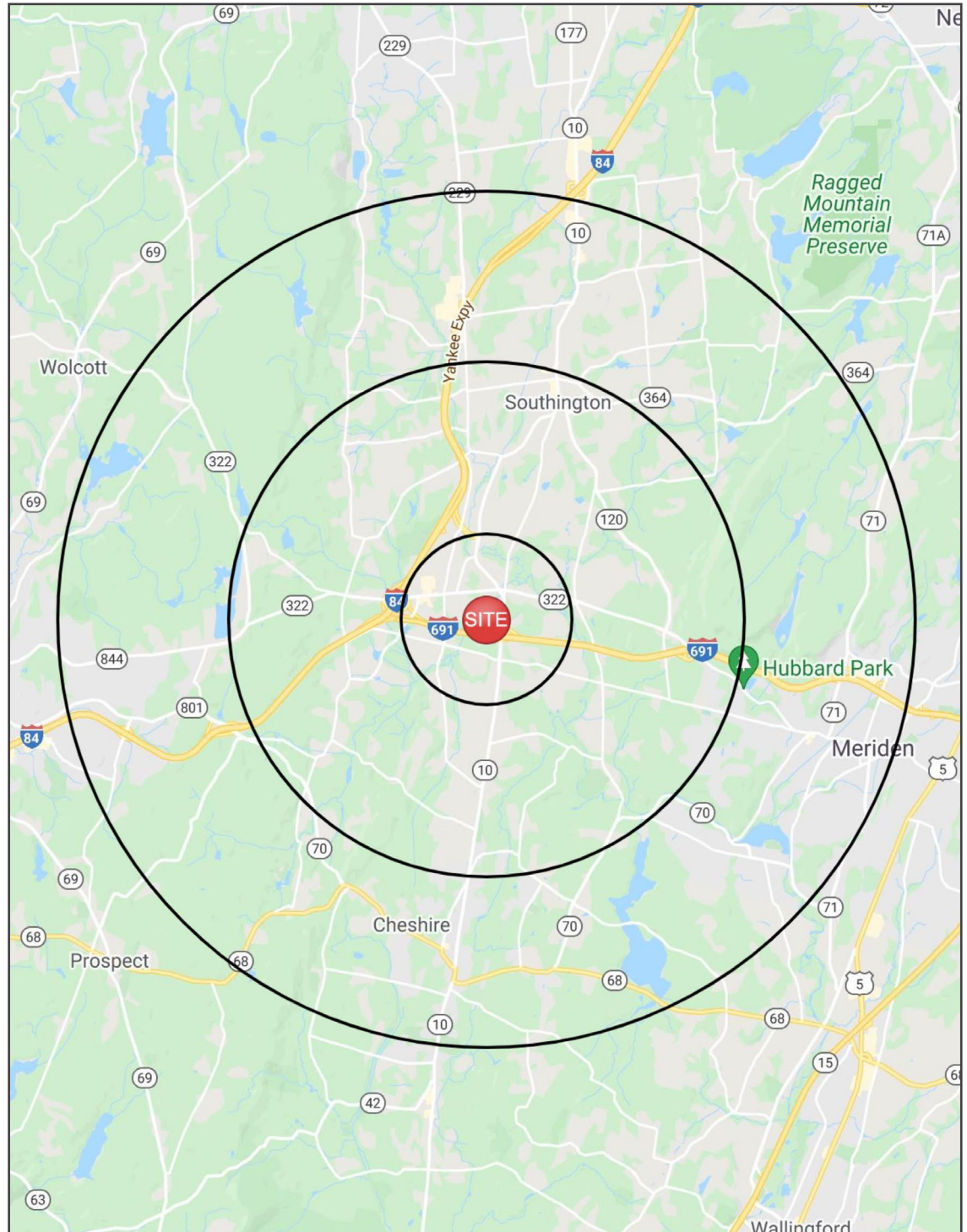
5 MILE RADIUS:



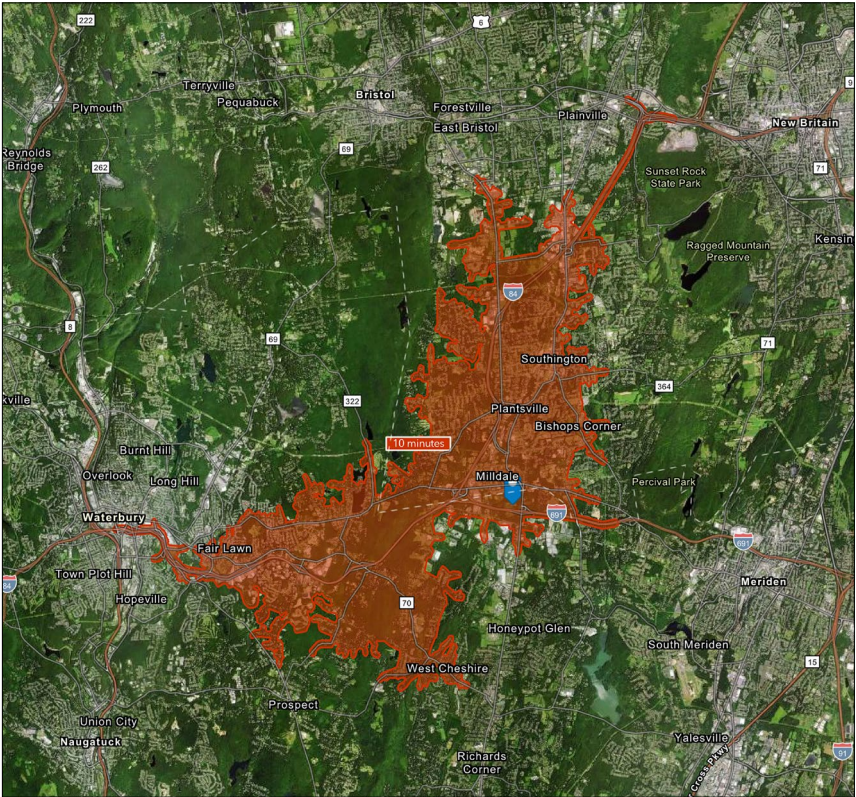
Total Population: **102,005**
Households: **39,661**
Daytime Population: **72,216**
Median Age: **41.4**



Average Household Income: **\$139,816**
Median Household Income: **\$107,961**



10 MINUTE DRIVE TIME



TOTAL RETAIL SALES

Includes F&B


\$481,874,662

EDUCATION

Bachelor's Degree
or Higher



37%

OWNER OCCUPIED HOME VALUE

Average



\$340,880

KEY FACTS

46,869

Population

42.8

Median Age

\$87,290

Median Household Income

43,163

Daytime Population

TAPESTRY SEGMENTS

Parks & Rec 5,112 Households	Front Porches 4,629 Households	Savvy Suburbanites 3,141 Households
Socioeconomic Traits More than half of the population is college educated. This is a financially shrewd market with a diverse workforce.	Socioeconomic Traits Composed of a blue-collar workforce with a strong labor force participation rate.	Socioeconomic Traits Residents are well educated, well read, and well capitalized. Families include empty nesters. Higher labor force participation rate at 67.9%.
Household Types Married couples, approaching retirement age.	Household Types Young families w/ children, single parent families, singles living alone.	Household Types Married couples with no children or older children; average household size is 2.85.
Typical Housing Single Family	Typical Housing Single Family; Multi Units	Typical Housing Single Family

ANNUAL HOUSEHOLD SPENDING

\$3,938

Eating
Out

\$2,364

Apparel &
Services

\$7,307

Groceries

\$279

Computer &
Hardware

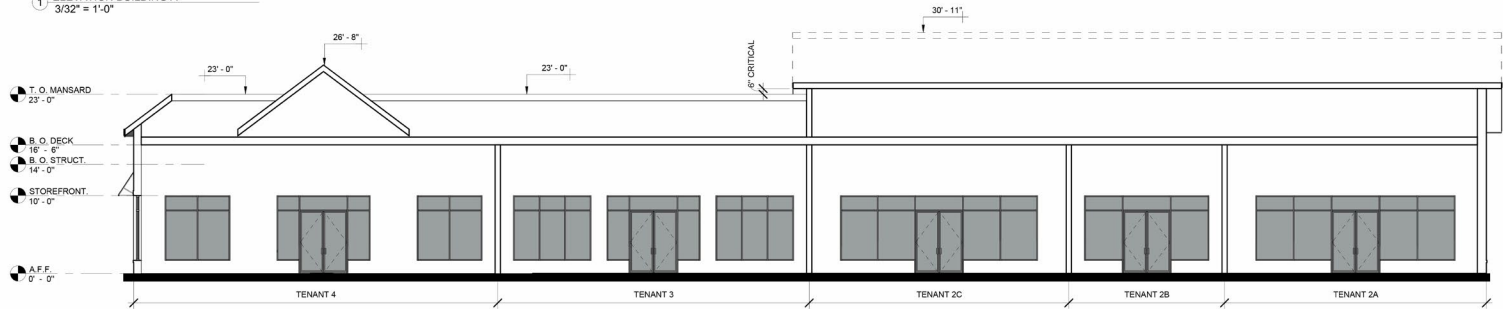
\$7,714

Health
Care

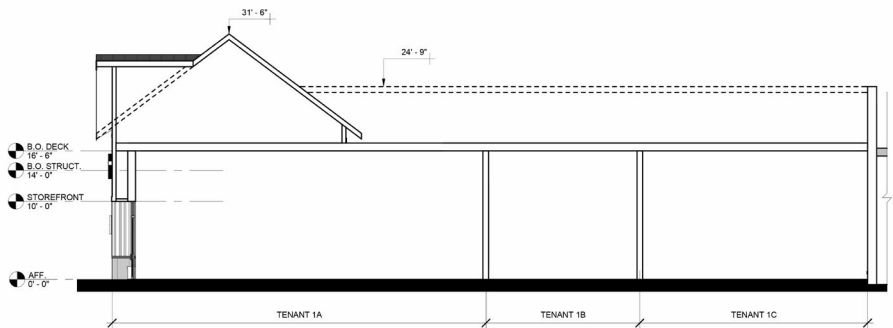
ELEVATIONS



1 ELEVATION BUILDING A
3/32" = 1'-0"



2 SCHEMATIC BUILDING A SECTION
1/8" = 1'-0"



3 SCHEMATIC BUILDING A SECTION
1/8" = 1'-0"

ELEVATIONS



② ELEVATION BUILDING B
3/32" = 1'-0"

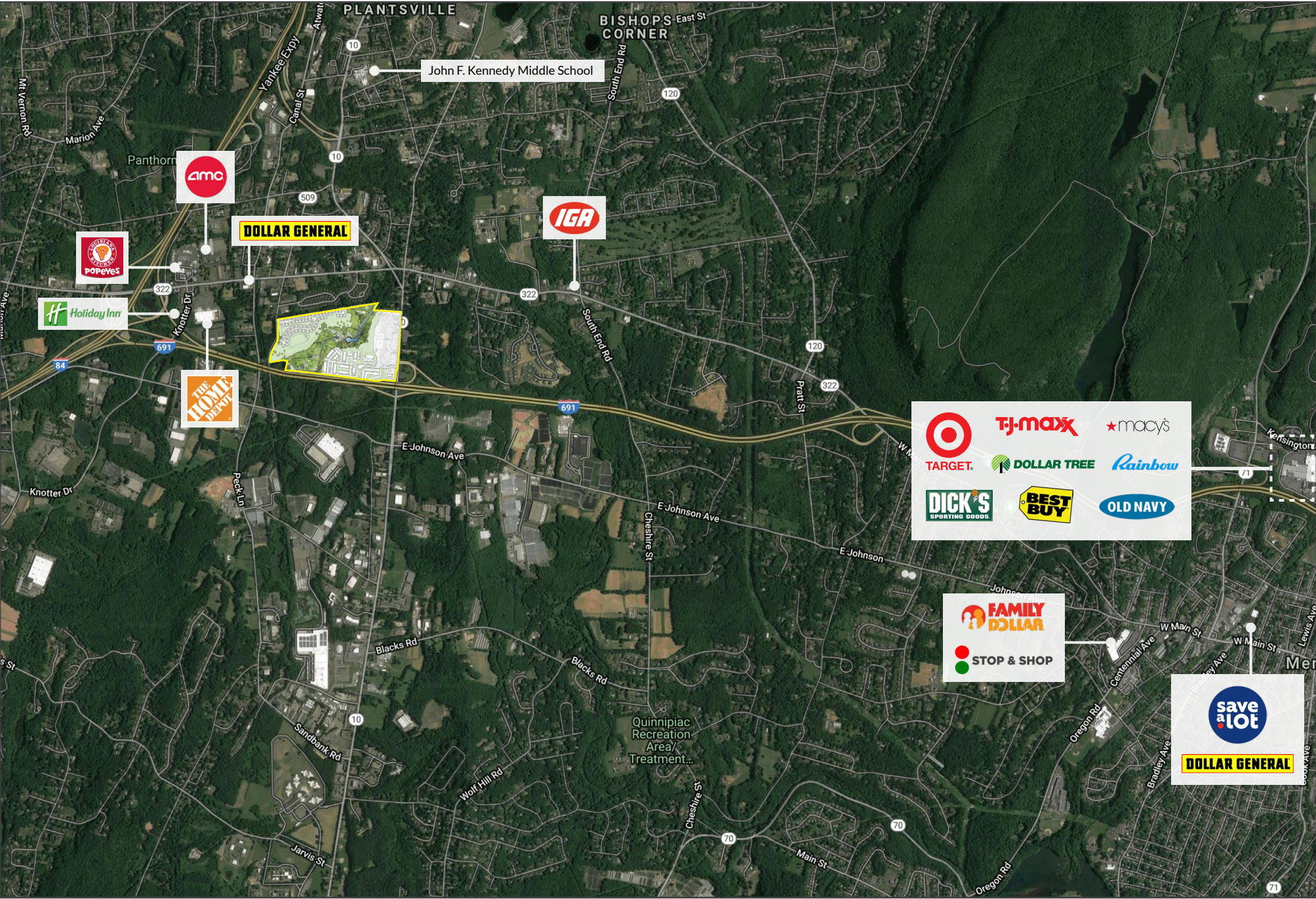
ELEVATIONS



AERIAL PLAN



MARKET OVERVIEW



RENDERINGS



THE SHOPS AT STONEBRIDGE



CHARTER REALTY

Dan Zelson | (203) 227-2922 | Dan@CharterRealty.com

www.CharterRealty.com

The Shops At Stonebridge | Route 10 & I-691, Cheshire, CT 06410

CHARTER REALTY

Information contained in this document has been reviewed and approved by Charter Realty; however, errors sometimes occur. Charter disclaims any warranty of any kind, expressed or implied, as to any matter whatsoever relating to this service. In no event shall Charter be liable for any indirect, special, incidental or consequential damages arising out of any use of or reliance on any content or materials contained herein.