

# CHESHIRE SHOPPING CENTER

929-966 S MAIN STREET | CHESHIRE, CT 06410

AVAILABLE 4,306 SF INLINE

ANCHORED BY



## PROPERTY INFORMATION

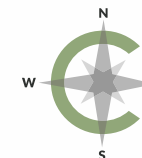
- CVS anchored shopping center, strategically located on busy Rt. 10 corridor
- Opportunity in affluent area
- Signalized Entrance
- Traffic Count:  
South Main Street - 19,498 vpd

## AVAILABLE SPACE

- Space 03B: 4,306 SF

## AREA DEMOGRAPHICS

2023 DEMOGRAPHICS	1 MILE	3 MILE	5 MILE
POPULATION	5,192	24,541	75,136
MEDIAN HH INC	\$127,835	\$137,407	\$120,483
AVERAGE HH INC	\$167,013	\$180,472	\$149,419



**CHARTER  
REALTY**

[www.CharterRealty.com](http://www.CharterRealty.com)

FOR MORE INFORMATION CONTACT:

WILLIAM CAFERO | 203.683.1566 | [William@CharterRealty.com](mailto:William@CharterRealty.com)

# CHESHIRE SHOPPING CENTER

929-966 S MAIN STREET | CHESHIRE, CT 06410

### TENANTS / AVAILABILITY

#	TENANT	Sq. Ft.
01	Liki Sushi	5,800
03A	Jersey Mike's	4,094
03B	Available	4,306



- Available
- Lease Out
- Occupied



**CHARTER REALTY**  
 Information contained in this document has been reviewed and approved by Charter Realty; however, errors sometimes occur. Charter disclaims any warranty of any kind, expressed or implied, as to any matter whatsoever relating to this service. In no event shall Charter be liable for any indirect, special, incidental or consequential damages arising out of any use of or reliance on any content or materials contained herein.

# CHESHIRE SHOPPING CENTER

929-966 S MAIN STREET | CHESHIRE, CT 06410

## TRADE AREA DEMOGRAPHICS

### 1 MILE RADIUS:



Total Population: **5,192**

Households: **1,960**

Daytime Population: **3,473**

Median Age: **45.4**



Average Household Income: **\$167,013**

Median Household Income: **\$127,835**

### 3 MILE RADIUS:



Total Population: **24,541**

Households: **9,301**

Daytime Population: **14,187**

Median Age: **45.9**



Average Household Income: **\$180,472**

Median Household Income: **\$137,407**

### 5 MILE RADIUS:



Total Population: **75,136**

Households: **27,666**

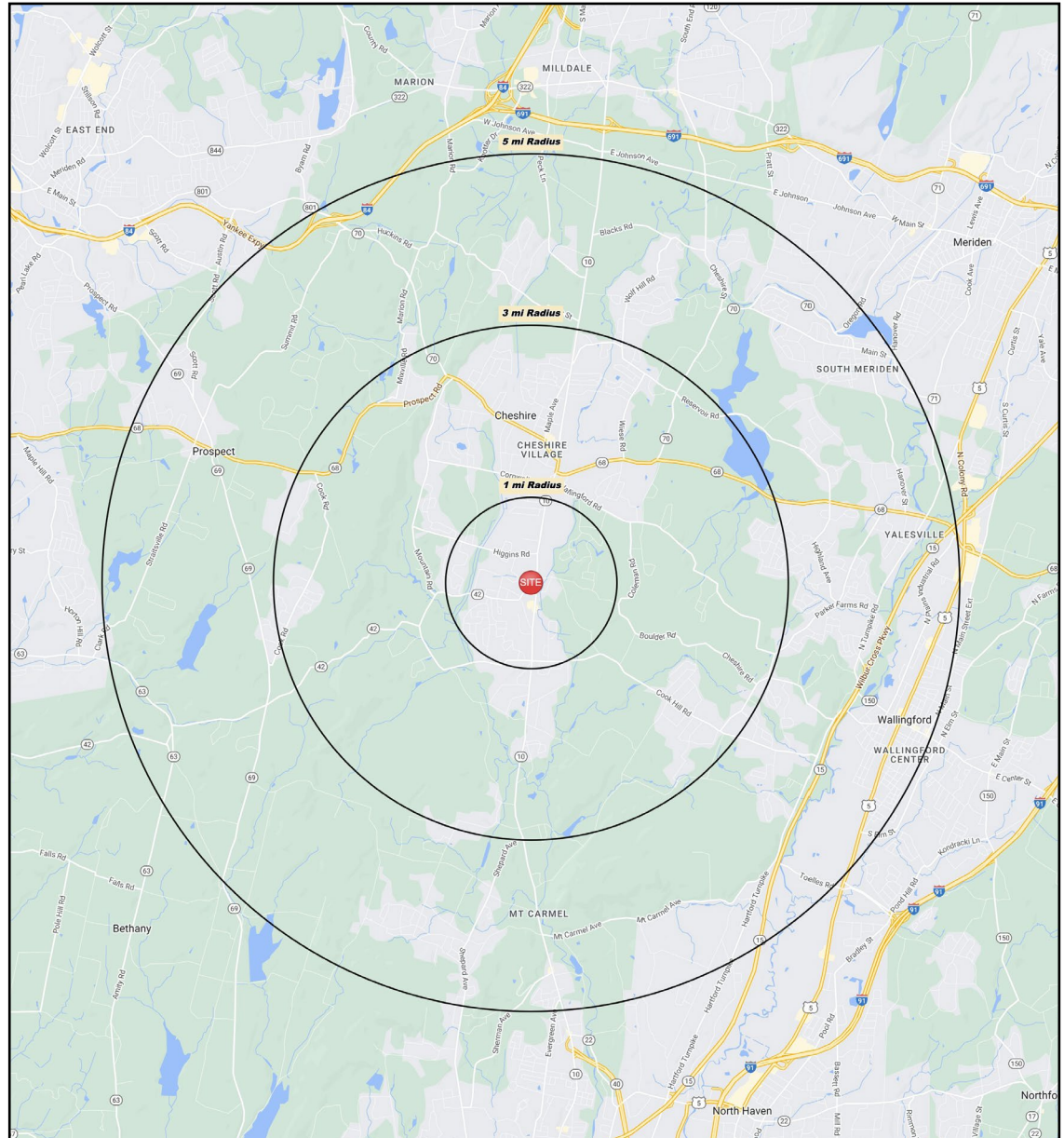
Daytime Population: **58,280**

Median Age: **42.8**



Average Household Income: **\$149,419**

Median Household Income: **\$120,483**



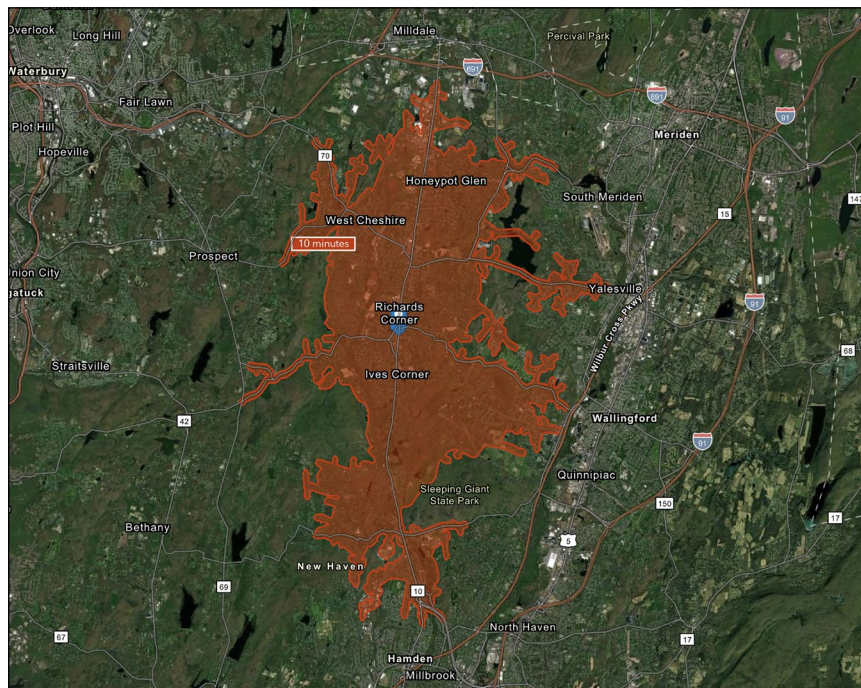
#### CHARTER REALTY

Information contained in this document has been reviewed and approved by Charter Realty; however, errors sometimes occur. Charter disclaims any warranty of any kind, expressed or implied, as to any matter whatsoever relating to this service. In no event shall Charter be liable for any indirect, special, incidental or consequential damages arising out of any use of or reliance on any content or materials contained herein.

# CHESHIRE SHOPPING CENTER

929-966 S MAIN STREET | CHESHIRE, CT 06410

**10 MINUTE DRIVE TIME**



## KEY FACTS

**31,941**

Population

**41.6**

Median Age

**\$125,267**

Median Household Income

**26,829**

Daytime Population

## TAPESTRY SEGMENTS

Savvy Suburbanites <i>5,240 Households</i>	Golden Years <i>1,687 Households</i>	Exurbanites <i>1,098 Households</i>
<p><b>Socioeconomic Traits</b></p> <p>Residents are well educated, well read, and well capitalized. Families include empty nesters. Higher labor force participation rate at 67.9%.</p>	<p><b>Socioeconomic Traits</b></p> <p>Independent, active seniors nearing the end of their careers or already in retirement. Older market w/ Median age of 52. Nearly 32% of residents aged 65 or older.</p>	<p><b>Socioeconomic Traits</b></p> <p>This labor force is beginning to retire. Participation has declined to less than 60%. Residents are college educated; nearly 81% have some college education.</p>
<p><b>Household Types</b></p> <p>Married couples with no children or older children; average household size is 2.85.</p>	<p><b>Household Types</b></p> <p>Single-person households and married-couple families w/ no children.</p>	<p><b>Household Types</b></p> <p>A larger market of empty nesters, married couples with no children; average household size is 2.50.</p>
<p><b>Typical Housing</b></p> <p>Single Family</p>	<p><b>Typical Housing</b></p> <p>Single Family; Multi-units</p>	<p><b>Typical Housing</b></p> <p>Single Family</p>

## TOTAL RETAIL SALES

Includes F&B



**\$358,724,771**

## EDUCATION

Bachelor's Degree or Higher



**58%**

## OWNER OCCUPIED HOME VALUE

Average



**\$416,760**

## ANNUAL HOUSEHOLD SPENDING

**\$5,586**

Eating Out

**\$3,335**

Apparel & Services

**\$10,230**

Groceries

**\$384**

Computer & Hardware

**\$11,385**

Health Care

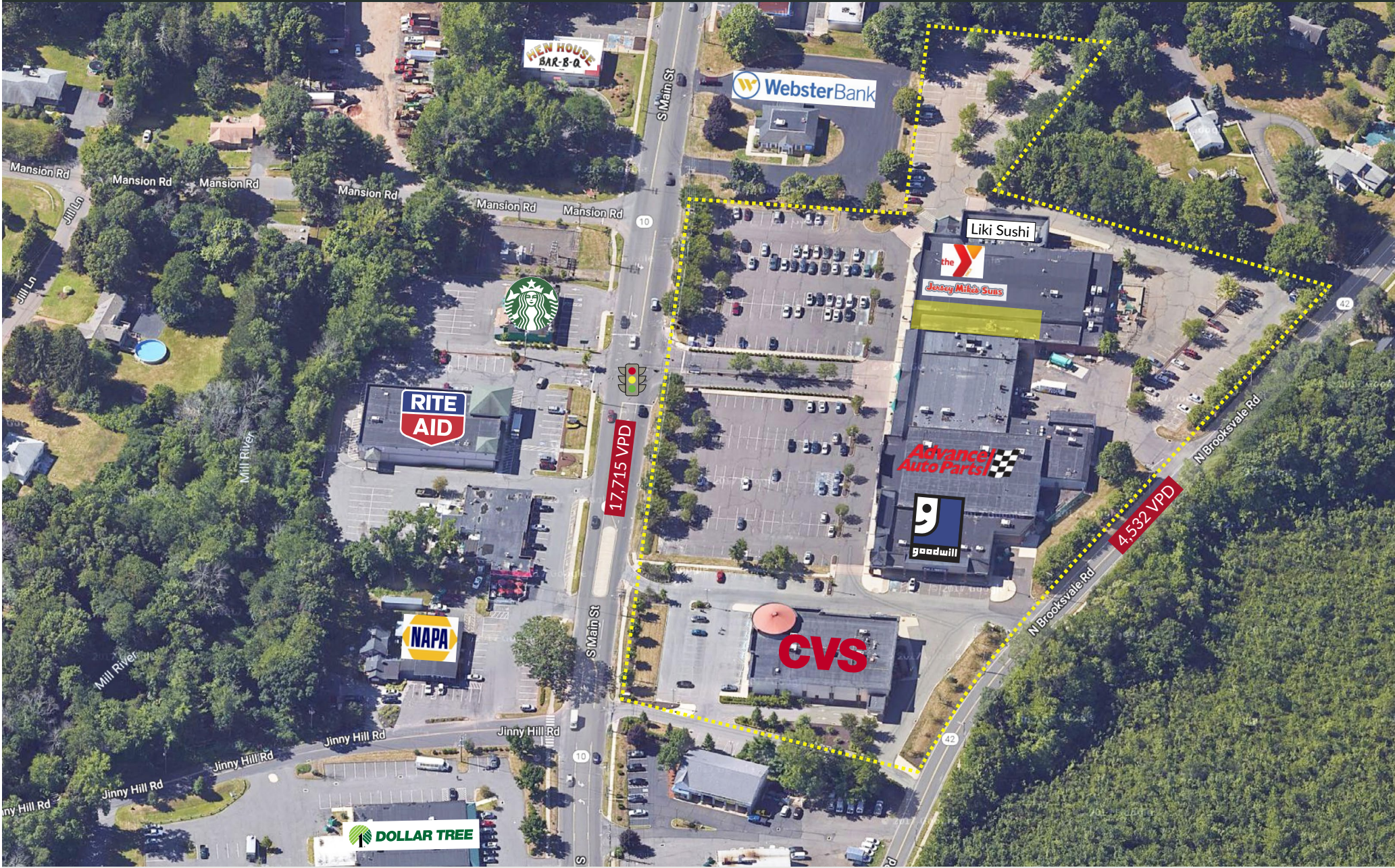


CHARTER REALTY

Information contained in this document has been reviewed and approved by Charter Realty; however, errors sometimes occur. Charter disclaims any warranty of any kind, expressed or implied, as to any matter whatsoever relating to this service. In no event shall Charter be liable for any indirect, special, incidental or consequential damages arising out of any use of or reliance on any content or materials contained herein.

# CHESHIRE SHOPPING CENTER

929-966 S MAIN STREET | CHESHIRE, CT 06410

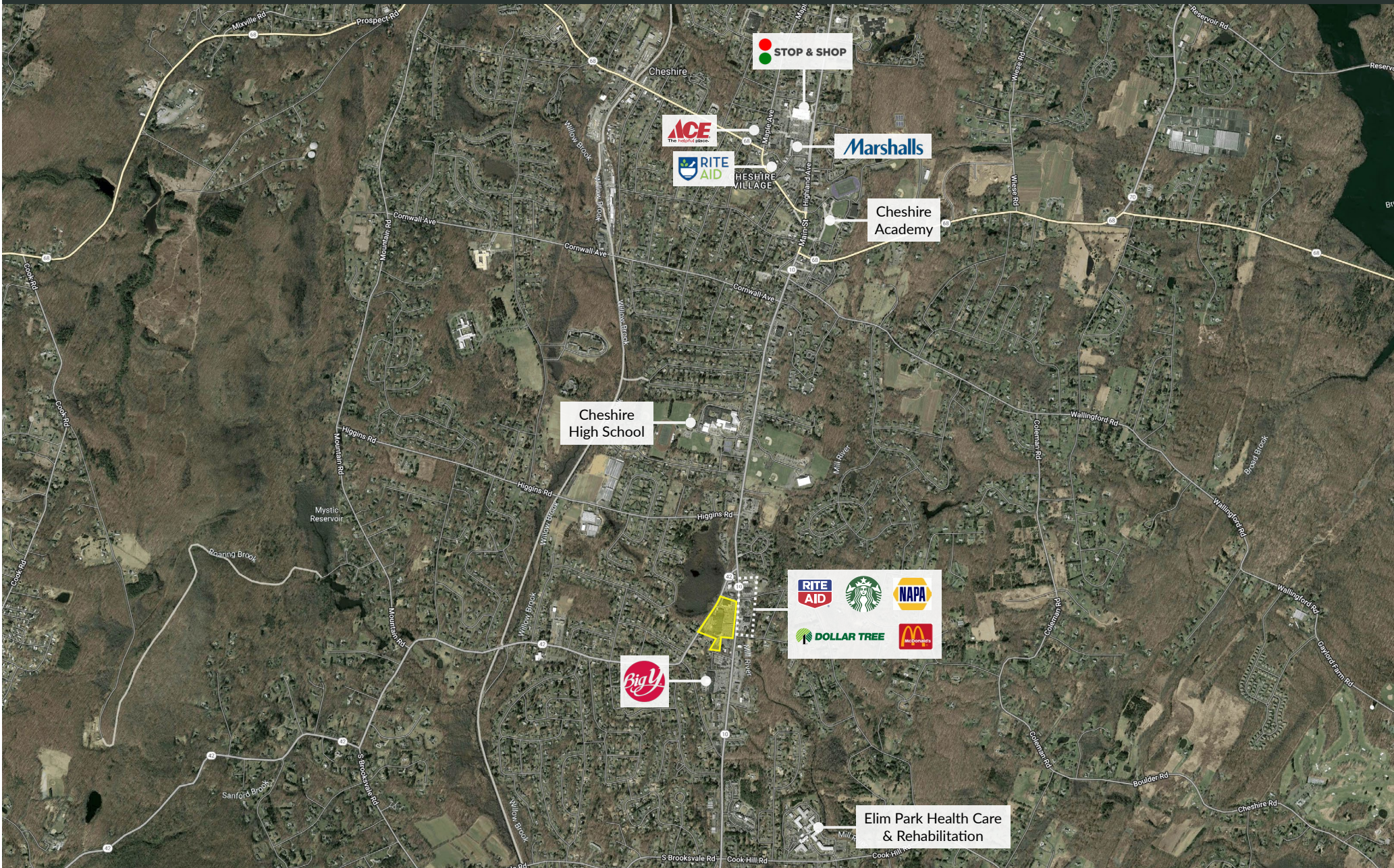


## CHARTER REALTY

Information contained in this document has been reviewed and approved by Charter Realty; however, errors sometimes occur. Charter disclaims any warranty of any kind, expressed or implied, as to any matter whatsoever relating to this service. In no event shall Charter be liable for any indirect, special, incidental or consequential damages arising out of any use of or reliance on any content or materials contained herein.

# CHESHIRE SHOPPING CENTER

929-966 S MAIN STREET | CHESHIRE, CT 06410



## CHARTER REALTY

Information contained in this document has been reviewed and approved by Charter Realty; however, errors sometimes occur. Charter disclaims any warranty of any kind, expressed or implied, as to any matter whatsoever relating to this service. In no event shall Charter be liable for any indirect, special, incidental or consequential damages arising out of any use of or reliance on any content or materials contained herein.

# CHESHIRE SHOPPING CENTER

929-966 S MAIN STREET | CHESHIRE, CT 06410

★ SITE

STOP & SHOP RITE AID  
Marshalls CVS  
ACE Cheshire Academy

THE HOME DEPOT BJ's Marshalls LOWE'S  
Big L Michaels ALDI KOHL'S  
Burlington FIVE BELOW STAPLES  
MATTRESS FIRM DOLLAR TREE

STOP & SHOP Walmart petco  
ShopRite BIG LOTS! Bowlers CVS  
RITE AID True Value TRACTOR SUPPLY CO.



CHOATE  
ROSEMARY HALL



CHARTER REALTY

Information contained in this document has been reviewed and approved by Charter Realty; however, errors sometimes occur. Charter disclaims any warranty of any kind, expressed or implied, as to any matter whatsoever relating to this service. In no event shall Charter be liable for any indirect, special, incidental or consequential damages arising out of any use of or reliance on any content or materials contained herein.