

STAMFORD RETAIL

699 CANAL STREET | STAMFORD, CT 06902

AVAILABLE 66,706 SF + 18,000 SF MEZZ

AREA TENANTS



PROPERTY INFORMATION

- Freestanding building located in the Harbor Point Development, a transformative mixed-use waterfront community located two blocks south of the Stamford Train Station and Interstate 95
- 450 ft of frontage along Canal Street, & 365 ft along Market Street
- Easy access on/off of I-95
- Traffic Counts:
Canal Street - 5,797 VPD

AVAILABLE SPACE

- Available 66,706sf + 18,000sf Mezz

AREA DEMOGRAPHICS

2023 DEMOGRAPHICS	1 MILE	2 MILE	3 MILE
POPULATION	44,539	95,843	129,090
MEDIAN HH INC	\$98,001	\$107,186	\$131,895
AVERAGE HH INC	\$128,526	\$147,494	\$189,591



www.CharterRealty.com

FOR MORE INFORMATION CONTACT:

DAN ZELSON | 203.227.2922 | Dan@CharterRealty.com

STAMFORD RETAIL

699 CANAL STREET | STAMFORD, CT 06902



CHARTER REALTY

Information contained in this document has been reviewed and approved by Charter Realty; however, errors sometimes occur. Charter disclaims any warranty of any kind, expressed or implied, as to any matter whatsoever relating to this service. In no event shall Charter be liable for any indirect, special, incidental or consequential damages arising out of any use of or reliance on any content or materials contained herein.

STAMFORD RETAIL

699 CANAL STREET | STAMFORD, CT 06902

TRADE AREA DEMOGRAPHICS

1 MILE RADIUS:



Total Population: **44,539**

Households: **18,045**

Daytime Population: **74,785**

Median Age: **34.7**



Average Household Income: **\$128,526**

Median Household Income: **\$98,001**

2 MILE RADIUS:



Total Population: **95,843**

Households: **38,857**

Daytime Population: **121,251**

Median Age: **35.6**



Average Household Income: **\$147,494**

Median Household Income: **\$107,186**

3 MILE RADIUS:



Total Population: **129,090**

Households: **50,485**

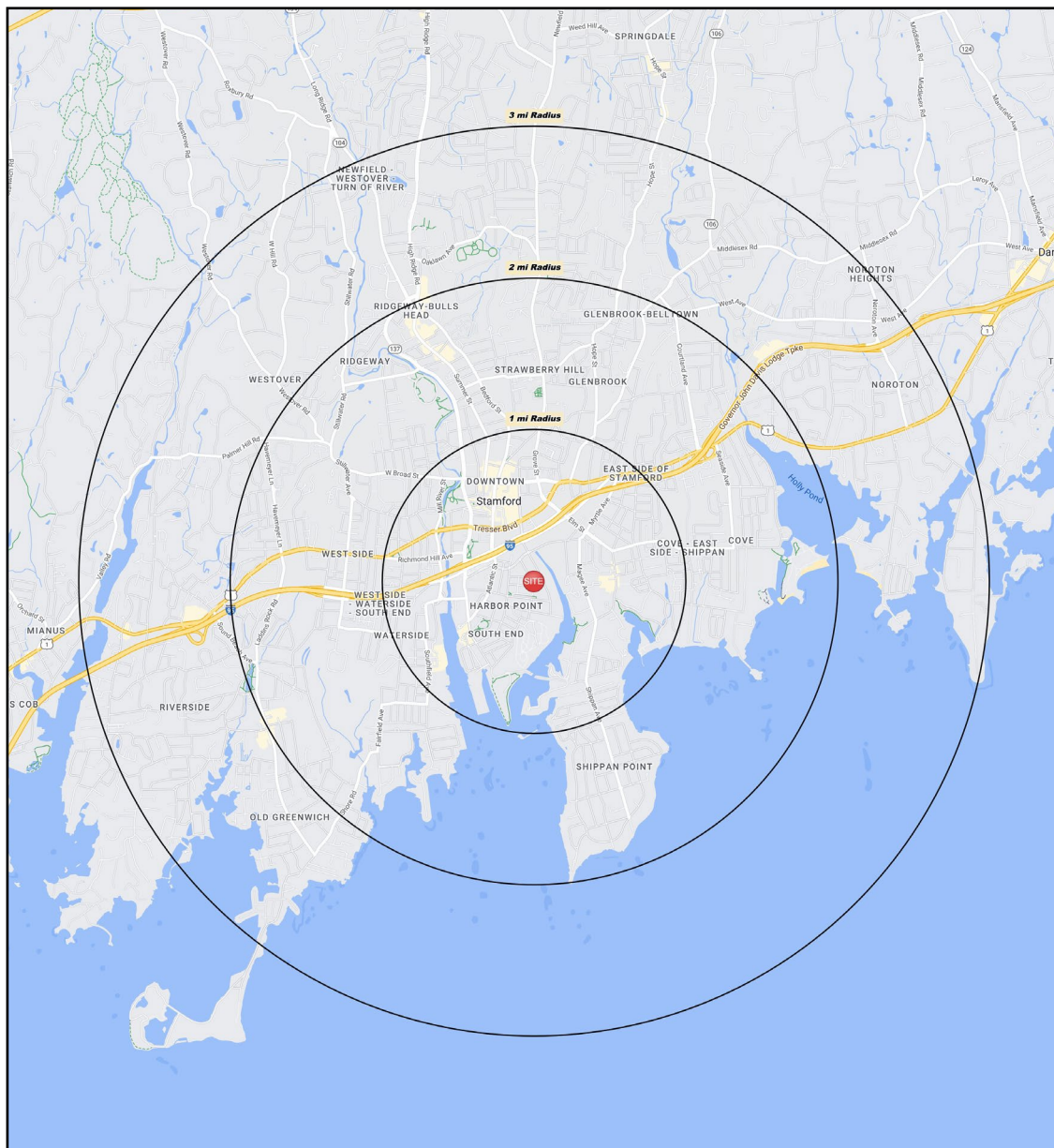
Daytime Population: **143,820**

Median Age: **36.9**



Average Household Income: **\$189,591**

Median Household Income: **\$131,895**



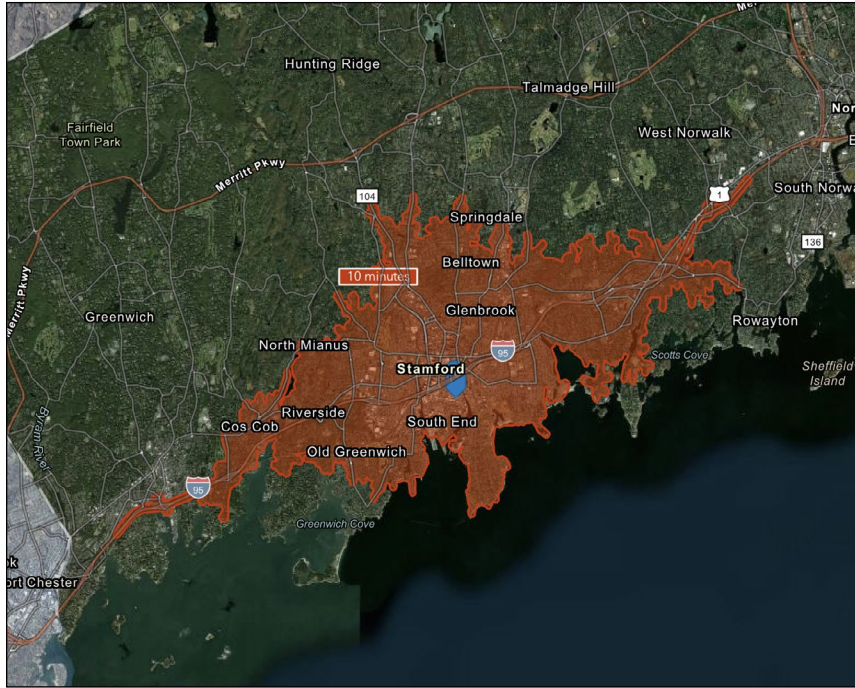
CHARTER REALTY

Information contained in this document has been reviewed and approved by Charter Realty; however, errors sometimes occur. Charter disclaims any warranty of any kind, expressed or implied, as to any matter whatsoever relating to this service. In no event shall Charter be liable for any indirect, special, incidental or consequential damages arising out of any use of or reliance on any content or materials contained herein.

STAMFORD RETAIL

699 CANAL STREET | STAMFORD, CT 06902

10 MINUTE DRIVE TIME



KEY FACTS

128,402

Population

\$104,938

Median Household Income

37.8

Median Age

152,988

Daytime Population

TAPESTRY SEGMENTS

Diverse Convergence

12,794 Households

Socioeconomic Traits

Almost 40% of the population were born abroad; almost one of five households has residents who do not speak English. Labor force participation rate is 67%.

Household Types

Young family market: 41% of families w/ children (married couple or single parent), plus married couples without children.

Typical Housing

High-Density Apartments;
Single Family

Top Tier

7,639 Households

Socioeconomic Traits

Highly educated, successful consumer market: more than one in three residents has a postgraduate degree. Annually, they earn more than three times the US median household income.

Household Types

Married couples without children or married couples with older children.

Typical Housing

Single Family

City Lights

6,867 Households

Socioeconomic Traits

Residents work hard in professional and service occupations but also seek to enjoy life. They earn above average incomes.

Household Types

Families, both married couples and single parents, as well as singles.

Typical Housing

Multi-units; Single Family

TOTAL RETAIL SALES

Includes F&B



\$1,832,085,052

EDUCATION

Bachelor's Degree or Higher



57%

OWNER OCCUPIED HOME VALUE

Average



\$810,699

ANNUAL HOUSEHOLD SPENDING

\$5,751

Eating Out

\$3,488

Apparel & Services

\$10,403

Groceries

\$417

Computer & Hardware

\$9,817

Health Care



CHARTER REALTY

Information contained in this document has been reviewed and approved by Charter Realty; however, errors sometimes occur. Charter disclaims any warranty of any kind, expressed or implied, as to any matter whatsoever relating to this service. In no event shall Charter be liable for any indirect, special, incidental or consequential damages arising out of any use of or reliance on any content or materials contained herein.

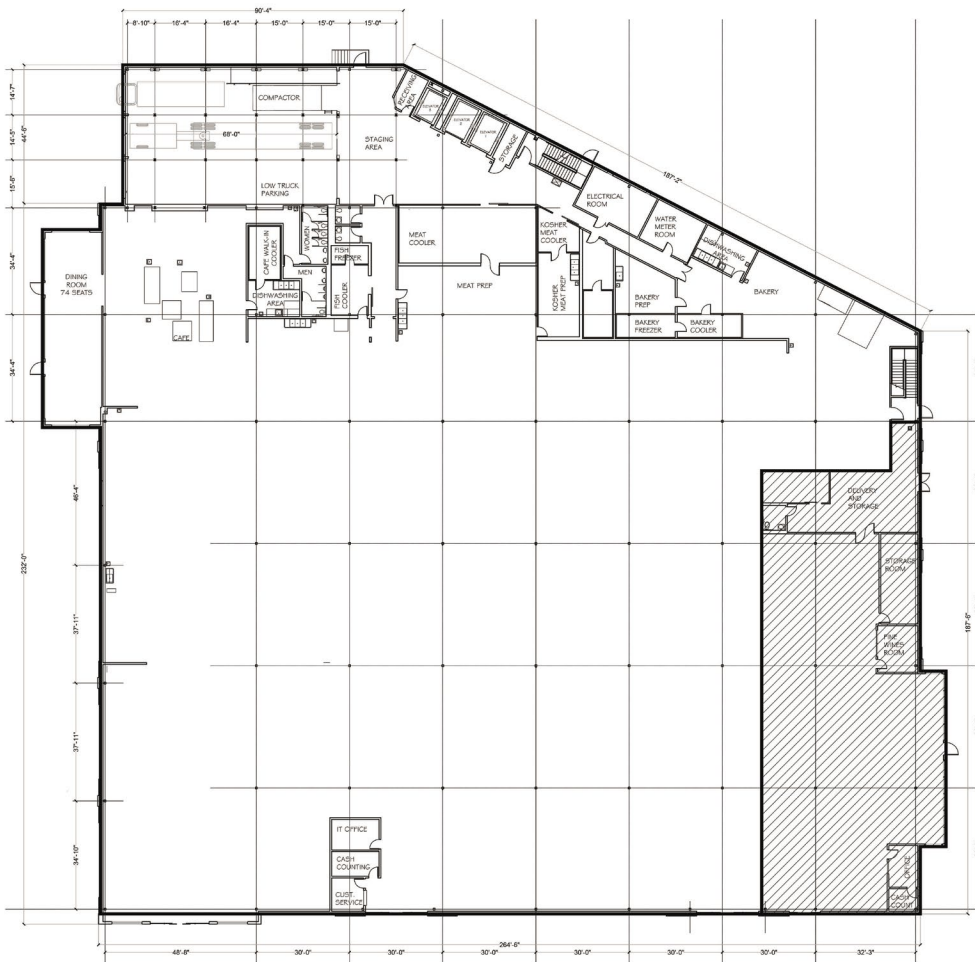
STAMFORD RETAIL

699 CANAL STREET | STAMFORD, CT 06902

FIRST FLOOR PLAN

The mezzanine previously housed offices, large walk in boxes (more like rooms) and kitchen space for the prepared foods (distributed to other stores as well). The floor load on the mezzanine can hold more weight the ground floor.

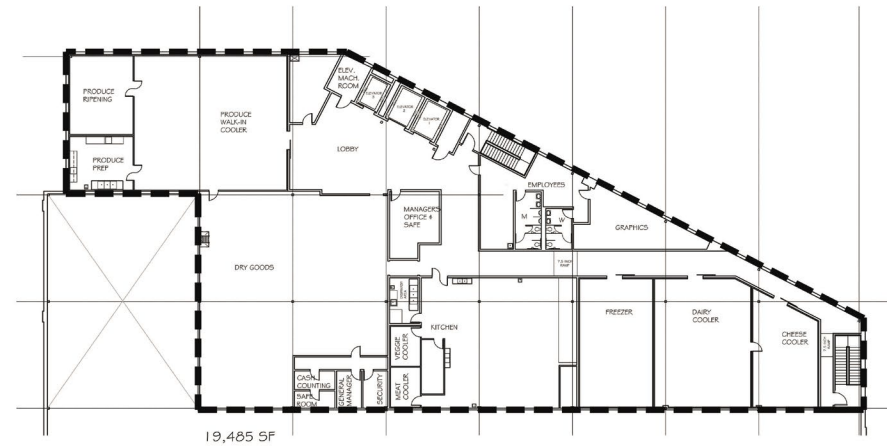
If the building were to be split, the mezzanine ideally would go to the larger occupant on the side where the loading bays are as that's where the freight elevators are located.



1 FIRST FLOOR PLAN
SCALE: 1/16" = 1'-0" WHEN PRINTED ON 30X42 PAPER

58,399 SF

7,898 SF



2 MEZZANINE PLAN
SCALE: 1/16" = 1'-0" WHEN PRINTED ON 30X42 PAPER

19,485 SF



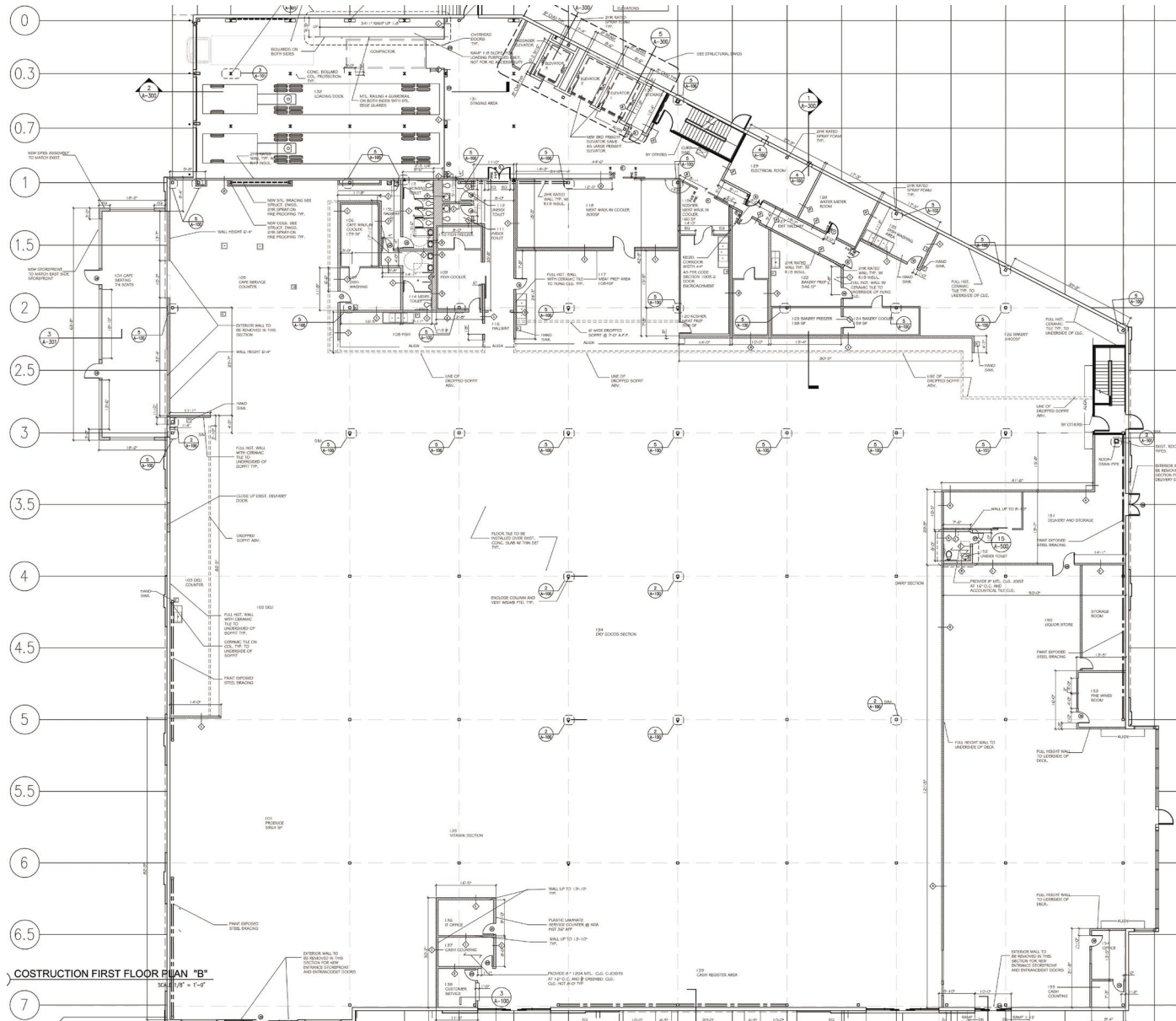
CHARTER REALTY

Information contained in this document has been reviewed and approved by Charter Realty; however, errors sometimes occur. Charter disclaims any warranty of any kind, expressed or implied, as to any matter whatsoever relating to this service. In no event shall Charter be liable for any indirect, special, incidental or consequential damages arising out of any use of or reliance on any content or materials contained herein.

STAMFORD RETAIL

699 CANAL STREET | STAMFORD, CT 06902

CONSTRUCTION FIRST FLOOR PLAN "B"



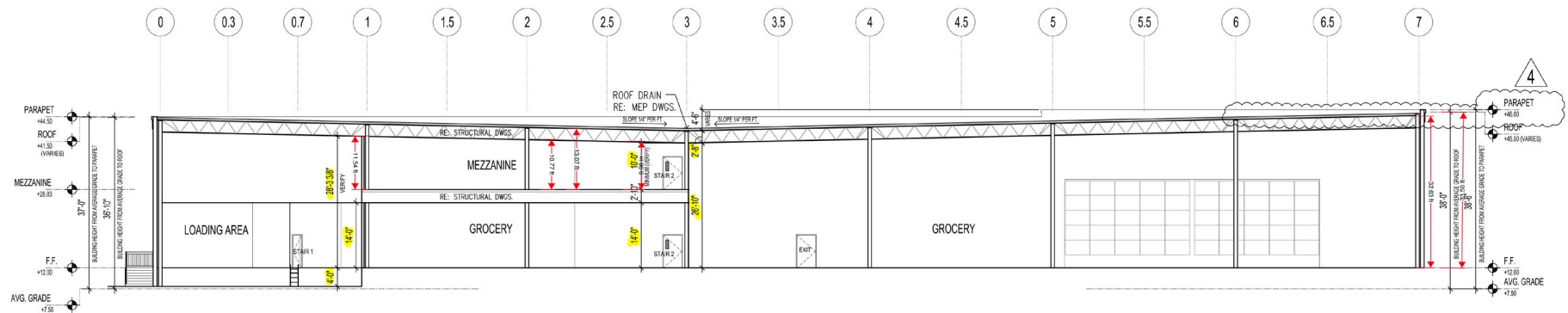
CHARTER REALTY

Information contained in this document has been reviewed and approved by Charter Realty; however, errors sometimes occur. Charter disclaims any warranty of any kind, expressed or implied, as to any matter whatsoever relating to this service. In no event shall Charter be liable for any indirect, special, incidental or consequential damages arising out of any use of or reliance on any content or materials contained herein.

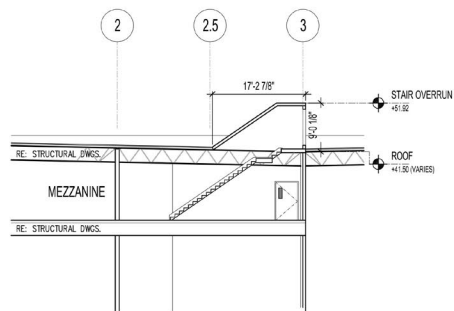
STAMFORD RETAIL

699 CANAL STREET | STAMFORD, CT 06902

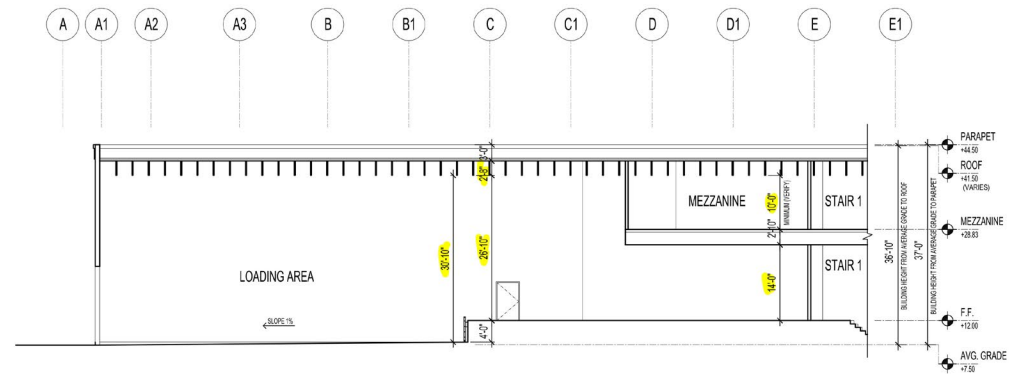
CEILING HEIGHTS



2 CROSS SECTION B-B
3/32"=1'-0"



3 SECTION AT ROOF STAIR
3/32"=1'-0"



1 CROSS SECTION A-A
3/32"=1'-0"



CHARTER REALTY

Information contained in this document has been reviewed and approved by Charter Realty; however, errors sometimes occur. Charter disclaims any warranty of any kind, expressed or implied, as to any matter whatsoever relating to this service. In no event shall Charter be liable for any indirect, special, incidental or consequential damages arising out of any use of or reliance on any content or materials contained herein.

STAMFORD RETAIL

699 CANAL STREET | STAMFORD, CT 06902



CHARTER REALTY
Information contained in this document has been reviewed and approved by Charter Realty; however, errors sometimes occur. Charter disclaims any warranty of any kind, expressed or implied, as to any matter whatsoever relating to this service. In no event shall Charter be liable for any indirect, special, incidental or consequential damages arising out of any use of or reliance on any content or materials contained herein.

STAMFORD RETAIL

699 CANAL STREET | STAMFORD, CT 06902

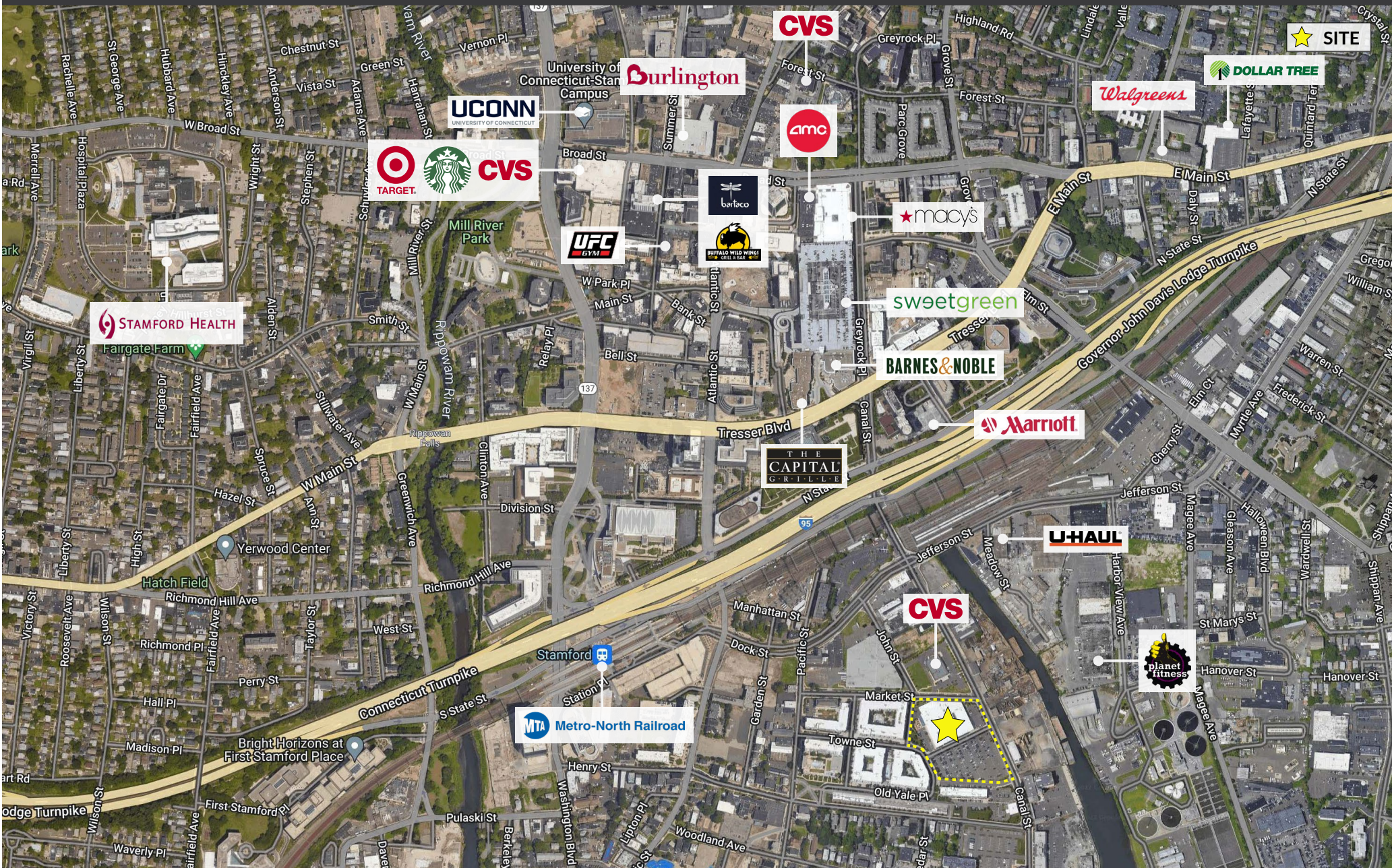


CHARTER REALTY

Information contained in this document has been reviewed and approved by Charter Realty; however, errors sometimes occur. Charter disclaims any warranty of any kind, expressed or implied, as to any matter whatsoever relating to this service. In no event shall Charter be liable for any indirect, special, incidental or consequential damages arising out of any use of or reliance on any content or materials contained herein.

STAMFORD RETAIL

699 CANAL STREET | STAMFORD, CT 06902



CHARTER REALTY

Information contained in this document has been reviewed and approved by Charter Realty; however, errors sometimes occur. Charter disclaims any warranty of any kind, expressed or implied, as to any matter whatsoever relating to this service. In no event shall Charter be liable for any indirect, special, incidental or consequential damages arising out of any use of or reliance on any content or materials contained herein.