

MILFORD SQUARE

1611 BOSTON POST RD | MILFORD, CT 06460

100% LEASED

CO-TENANTS



PROPERTY INFORMATION

- Newly developed retail with abundant parking both in the front and rear of the center
- Milford Square sits between two traffic light intersections, and across from a Whole Foods anchored shopping center
- Multiple access / egress points
- Traffic: 31,004 vehicles per day

AVAILABLE SPACE

- 100% leased

AREA DEMOGRAPHICS

2024 DEMOGRAPHICS	1 MILE	3 MILE	5 MILE
POPULATION	3,809	50,790	127,411
MEDIAN HH INC	\$114,900	\$115,414	\$100,107
AVERAGE HH INC	\$146,553	\$154,988	\$132,104



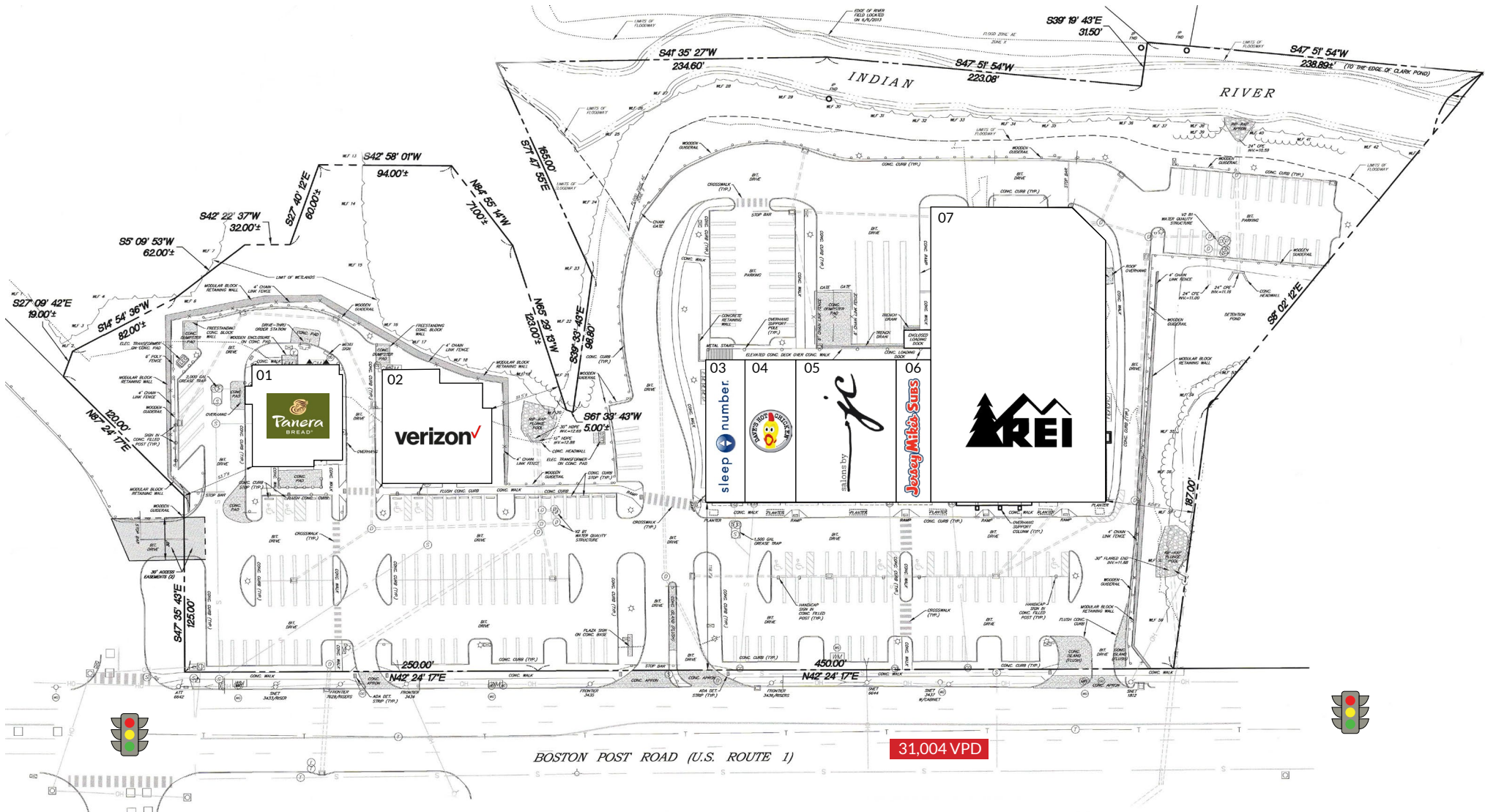
www.CharterRealty.com

FOR MORE INFORMATION CONTACT:

PETER H. LEVINE | 203.683.1567 | Peter@CharterRealty.com

MILFORD SQUARE

1611 BOSTON POST RD | MILFORD, CT 06460



CHARTER REALTY
Information contained in this document has been reviewed and approved by Charter Realty; however, errors sometimes occur. Charter disclaims any warranty of any kind, expressed or implied, as to any matter whatsoever relating to this service. In no event shall Charter be liable for any indirect, special, incidental or consequential damages arising out of any use of or reliance on any content or materials contained herein.

MILFORD SQUARE

1611 BOSTON POST RD | MILFORD, CT 06460

TRADE AREA DEMOGRAPHICS

1 MILE RADIUS:



Total Population: **3,809**

Households: **1,735**

Daytime Population: **7,878**

Median Age: **46.8**



Average Household Income: **\$146,553**

Median Household Income : **\$114,900**

3 MILE RADIUS:



Total Population: **50,790**

Households: **21,085**

Daytime Population: **51,009**

Median Age: **46.6**



Average Household Income: **\$154,988**

Median Household Income : **\$115,414**

5 MILE RADIUS:



Total Population: **127,411**

Households: **51,645**

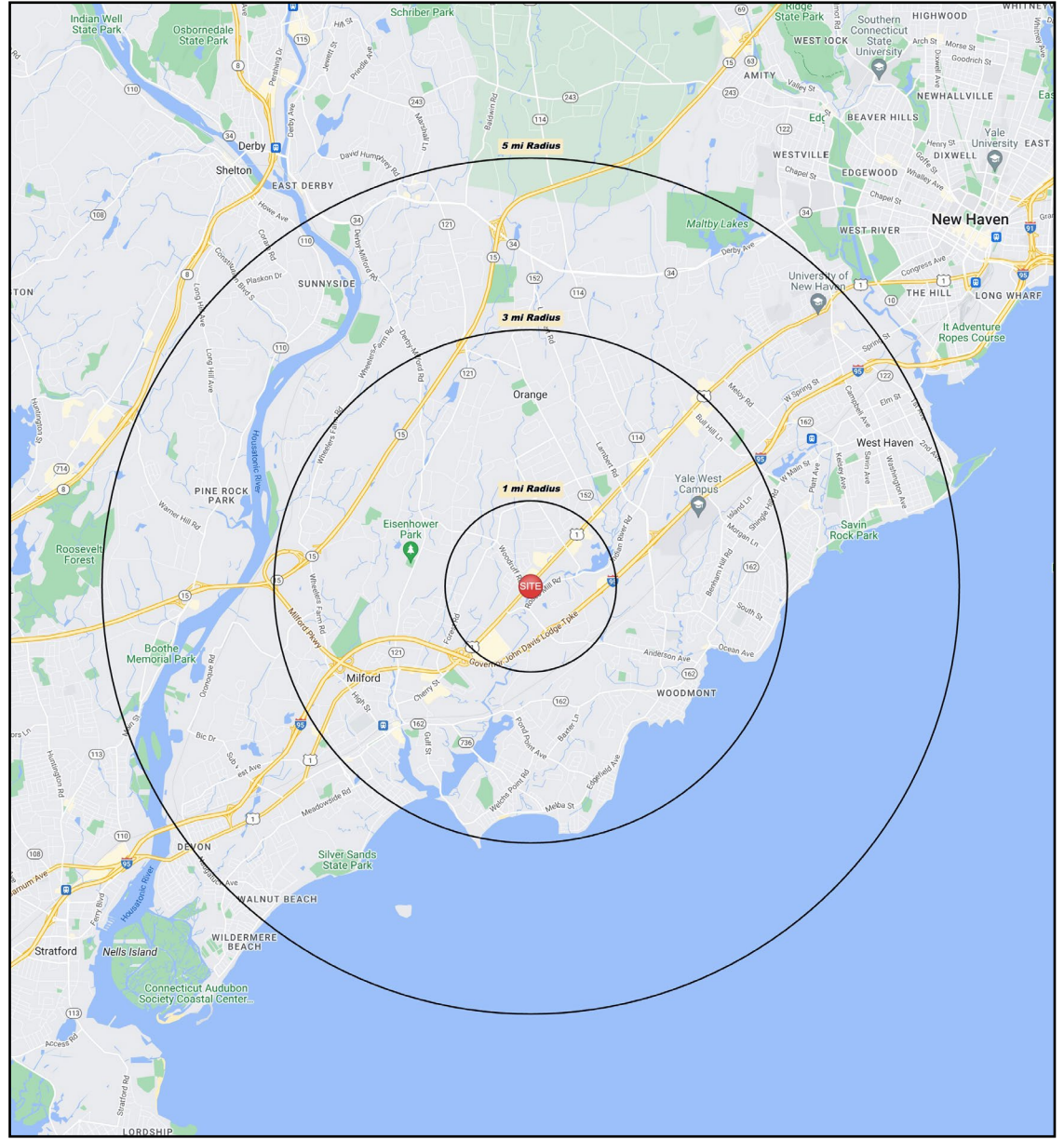
Daytime Population: **103,212**

Median Age: **43.1**



Average Household Income: **\$132,104**

Median Household Income : **\$100,107**



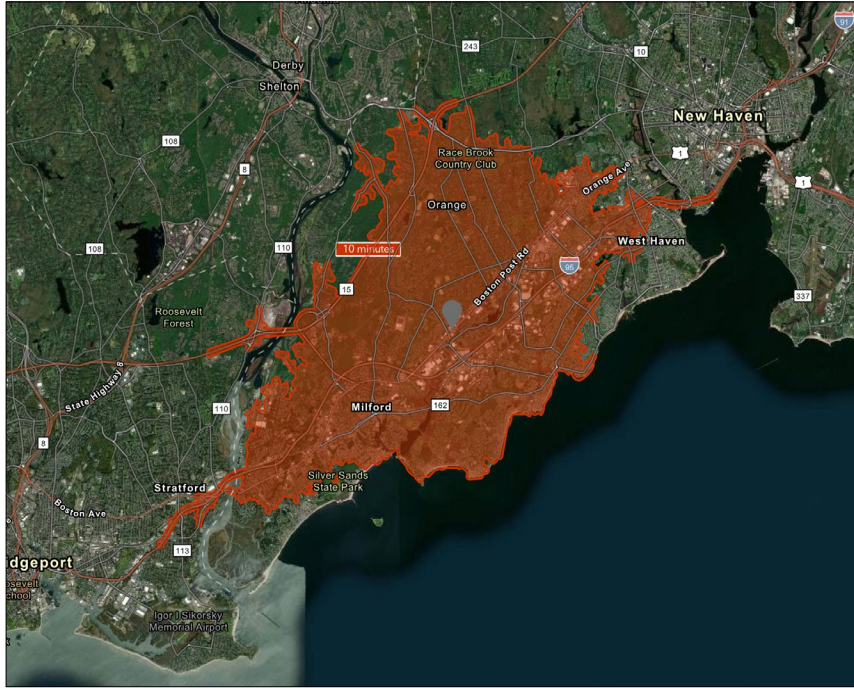
CHARTER REALTY

Information contained in this document has been reviewed and approved by Charter Realty; however, errors sometimes occur. Charter disclaims any warranty of any kind, expressed or implied, as to any matter whatsoever relating to this service. In no event shall Charter be liable for any indirect, special, incidental or consequential damages arising out of any use of or reliance on any content or materials contained herein.

MILFORD SQUARE

1611 BOSTON POST RD | MILFORD, CT 06460

10 MINUTE DRIVE TIME



KEY FACTS

72,876

Population

\$98,665

Median Household Income

45.0

Median Age

81,946

Daytime Population

TAPESTRY SEGMENTS

Pleasantville

5,300 households

Socioeconomic Traits

66% college educated. Higher labor force participation rate. Many professionals in finance, information/ technology, education, or management.

Household Types

Older married-couple families, more w/o children under 18, but many w/ children over 18. years

Typical Housing

Single Family

Parks & Rec

4,091 households

Socioeconomic Traits

More than half of the population is college educated. This is a financially shrewd market with a diverse workforce.

Household Types

Married couples, approaching retirement age.

Typical Housing

Single Family

Savvy Suburbanites

3,747 households

Socioeconomic Traits

Residents are well educated, well read, and well capitalized. Families include empty nesters. Higher labor force participation rate at 67.9%.

Household Types

Married couples with no children or older children; average household size is 2.85.

Typical Housing

Single Family

TOTAL RETAIL SALES

Includes F&B



\$845,952,043

EDUCATION

Bachelor's Degree or Higher



46%

OWNER OCCUPIED HOME VALUE

Average



\$408,283

ANNUAL HOUSEHOLD SPENDING

\$4,387

Eating Out

\$2,639

Apparel & Services

\$8,108

Groceries

\$309

Computer & Hardware

\$8,623

Health Care

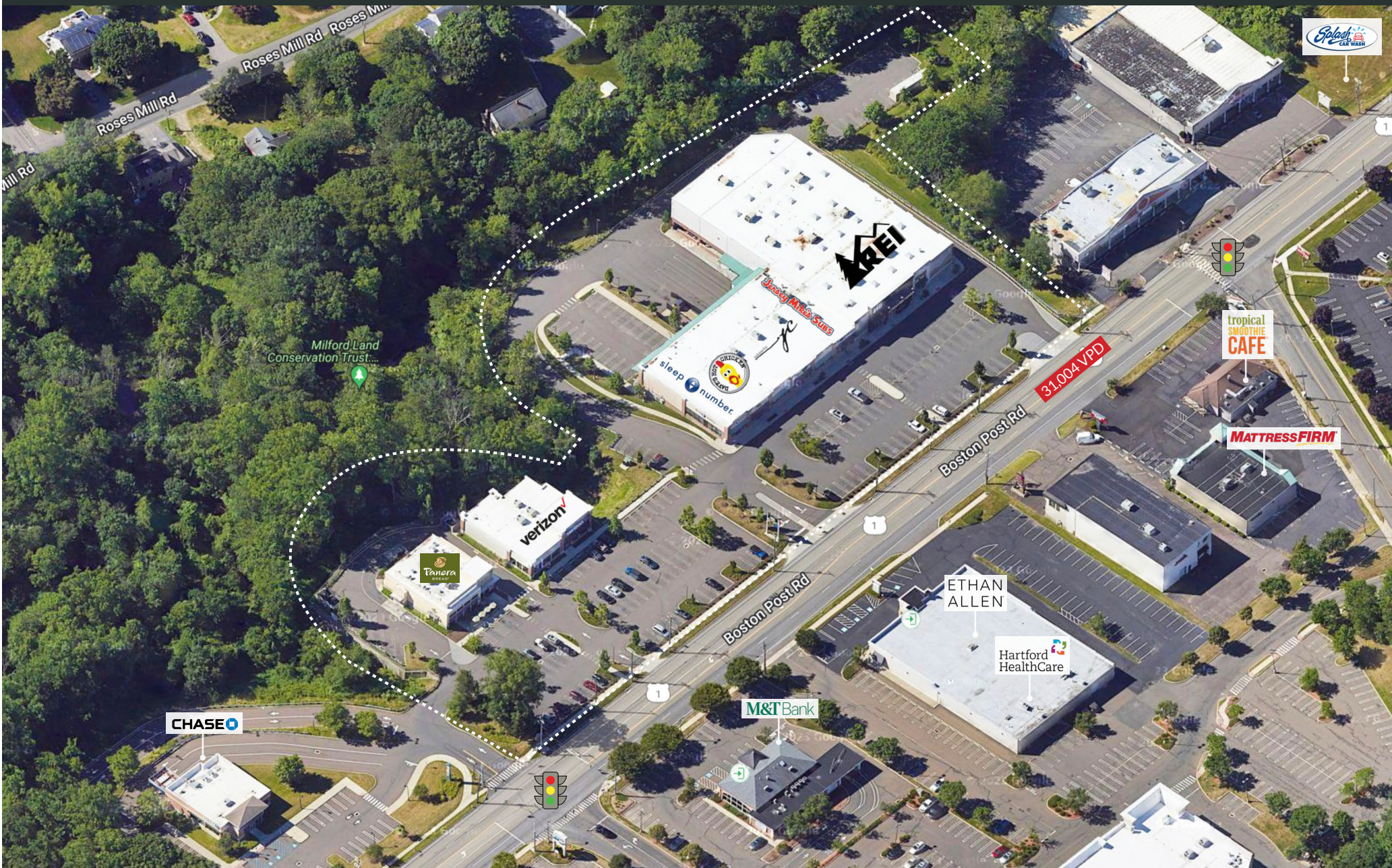


CHARTER REALTY

Information contained in this document has been reviewed and approved by Charter Realty; however, errors sometimes occur. Charter disclaims any warranty of any kind, expressed or implied, as to any matter whatsoever relating to this service. In no event shall Charter be liable for any indirect, special, incidental or consequential damages arising out of any use of or reliance on any content or materials contained herein.

MILFORD SQUARE

1611 BOSTON POST RD | MILFORD, CT 06460



CHARTER REALTY

Information contained in this document has been reviewed and approved by Charter Realty; however, errors sometimes occur. Charter disclaims any warranty of any kind, expressed or implied, as to any matter whatsoever relating to this service. In no event shall Charter be liable for any indirect, special, incidental or consequential damages arising out of any use of or reliance on any content or materials contained herein.

MILFORD SQUARE

1611 BOSTON POST RD | MILFORD, CT 06460



CHARTER REALTY
Information contained in this document has been reviewed and approved by Charter Realty; however, errors sometimes occur. Charter disclaims any warranty of any kind, expressed or implied, as to any matter whatsoever relating to this service. In no event shall Charter be liable for any indirect, special, incidental or consequential damages arising out of any use of or reliance on any content or materials contained herein.

MILFORD SQUARE

1611 BOSTON POST RD | MILFORD, CT 06460

★ SITE



CHARTER REALTY

Information contained in this document has been reviewed and approved by Charter Realty; however, errors sometimes occur. Charter disclaims any warranty of any kind, expressed or implied, as to any matter whatsoever relating to this service. In no event shall Charter be liable for any indirect, special, incidental or consequential damages arising out of any use of or reliance on any content or materials contained herein.

MILFORD SQUARE

1611 BOSTON POST RD | MILFORD, CT 06460



CHARTER REALTY

Information contained in this document has been reviewed and approved by Charter Realty; however, errors sometimes occur. Charter disclaims any warranty of any kind, expressed or implied, as to any matter whatsoever relating to this service. In no event shall Charter be liable for any indirect, special, incidental or consequential damages arising out of any use of or reliance on any content or materials contained herein.