

GUILFORD COMMONS

1919 BOSTON POST ROAD | GUILFORD, CT 06437

100% LEASED

ANCHORED BY



PROPERTY INFORMATION

- CT Premier shoreline property
- 123,000 SF - Anchored by Fresh Market
- New Deals with TJ Maxx, Old Navy
- Also join Michael's, Petco, Ulta and Pure Barre
- Great I-95 exposure

SPACE DETAILS

100% Leased

AREA DEMOGRAPHICS

2024 DEMOGRAPHICS	5 MILE	7 MILE	10 MILE
POPULATION	39,844	68,654	168,350
MEDIAN HH INC	\$137,576	\$129,679	\$105,917
AVERAGE HH INC	\$202,161	\$188,926	\$149,670



**CHARTER
REALTY**

www.CharterRealty.com

FOR MORE INFORMATION CONTACT:

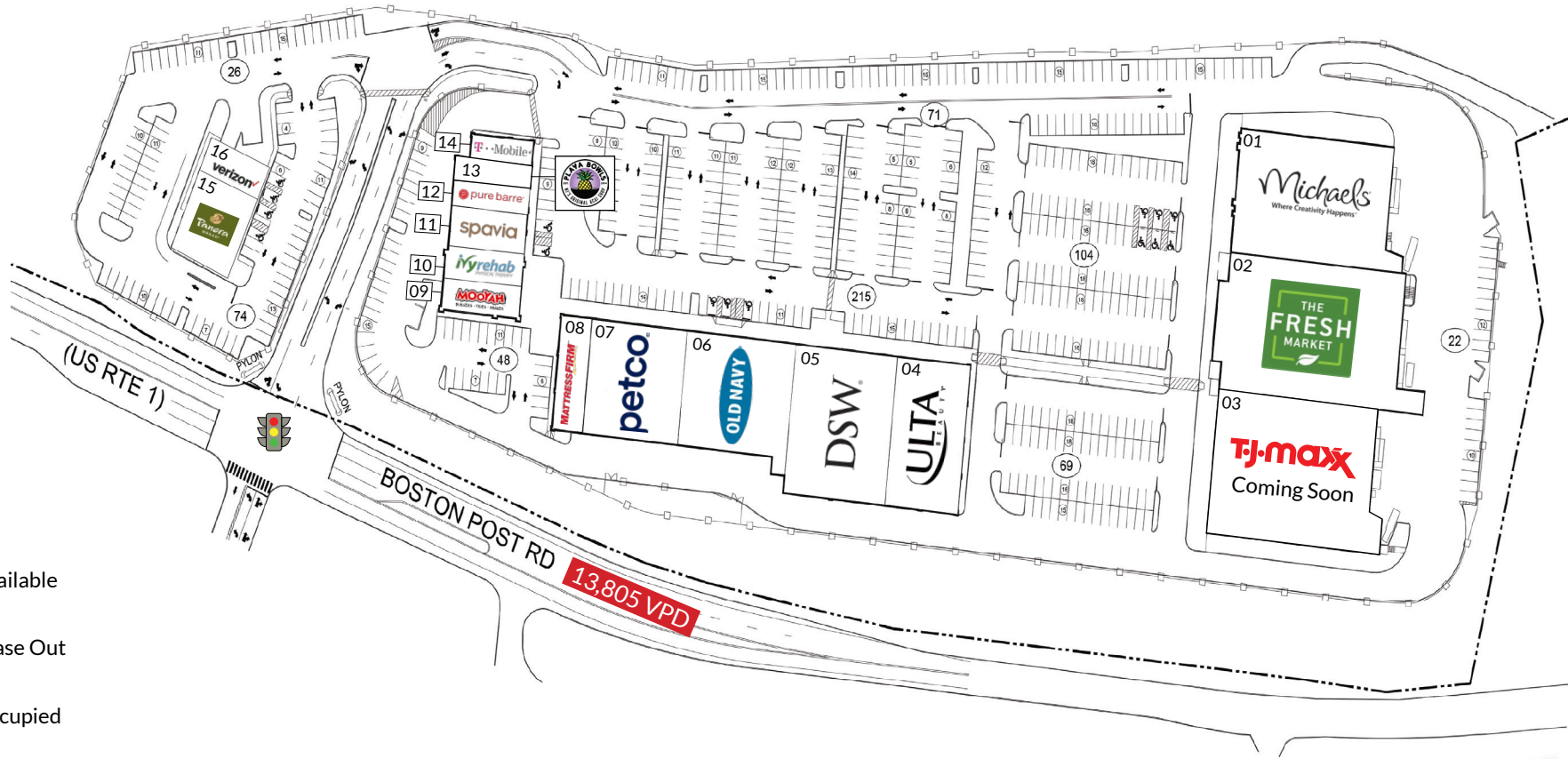
ASHER ZELSON | 203.653.8186 | Asher@CharterRealty.com

GUILFORD COMMONS

1919 BOSTON POST ROAD | GUILFORD, CT 06437

TENANTS / AVAILABILITY

#	TENANT
01	Michael's
02	The Fresh Market
03	TJ Maxx Coming Soon
04	Ulta
05	DSW
06	Old Navy
07	Petco
08	Mattress Firm
09	Mooyah
10	Ivy Rehab
11	Spavia
12	Pure Barre
13	Playa Bowls - Coming Soon
14	T Mobile
15	Panera
16	Verizon



- Available
- Lease Out
- Occupied



CHARTER REALTY

Information contained in this document has been reviewed and approved by Charter Realty; however, errors sometimes occur. Charter disclaims any warranty of any kind, expressed or implied, as to any matter whatsoever relating to this service. In no event shall Charter be liable for any indirect, special, incidental or consequential damages arising out of any use of or reliance on any content or materials contained herein.

GUILFORD COMMONS

1919 BOSTON POST ROAD | GUILFORD, CT 06437

TRADE AREA DEMOGRAPHICS

5 MILE RADIUS:



Total Population: **39,844**

Households: **16,342**

Daytime Population: **35,107**

Median Age: **50.2**



Average Household Income: **\$202,161**

Median Household Income: **\$137,576**

7 MILE RADIUS:



Total Population: **68,654**

Households: **29,049**

Daytime Population: **56,462**

Median Age: **50.0**



Average Household Income: **\$188,926**

Median Household Income: **\$129,679**

10 MILE RADIUS:



Total Population: **168,350**

Households: **69,773**

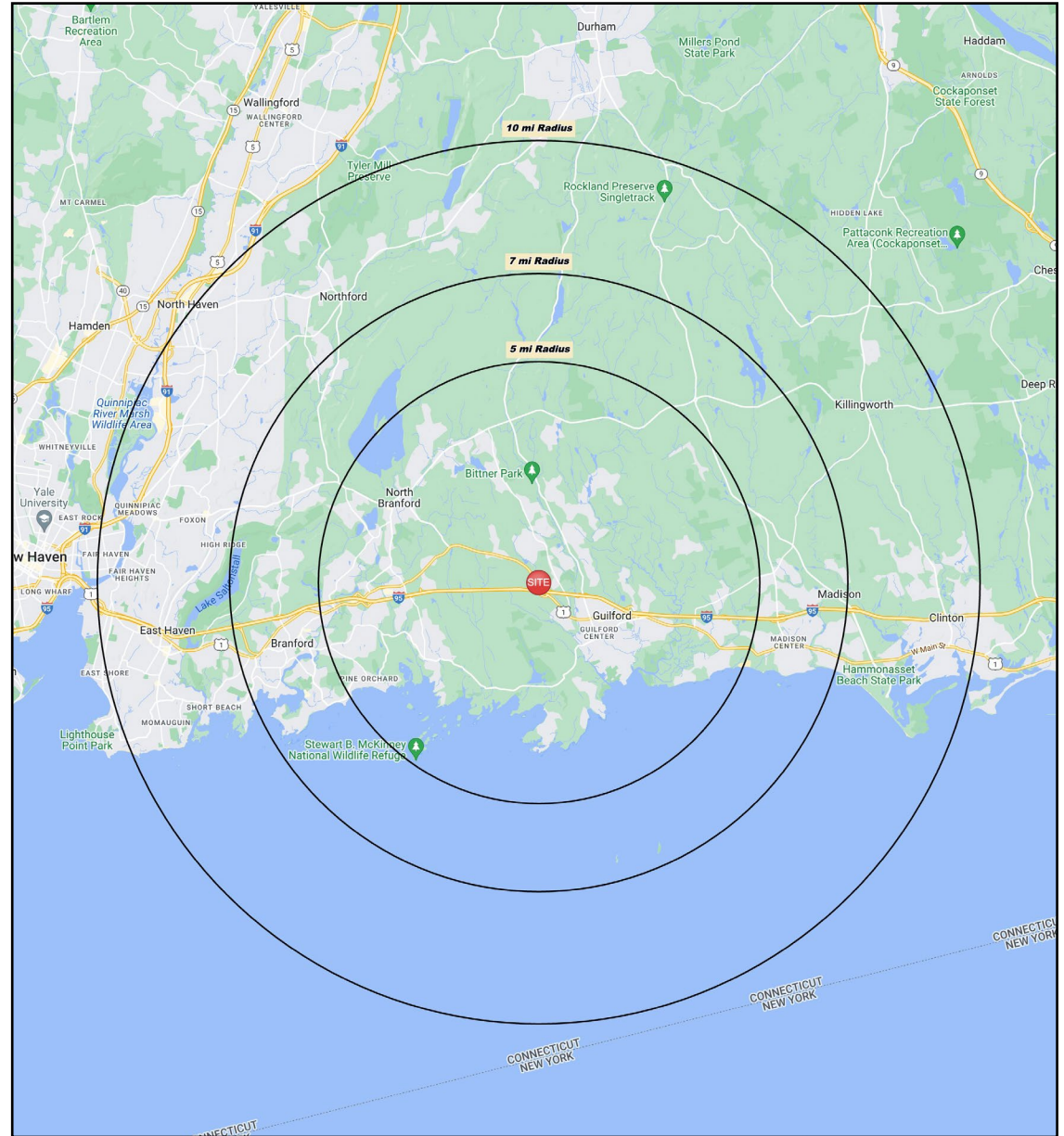
Daytime Population: **119,854**

Median Age: **45.9**



Average Household Income: **\$149,670**

Median Household Income: **\$105,917**



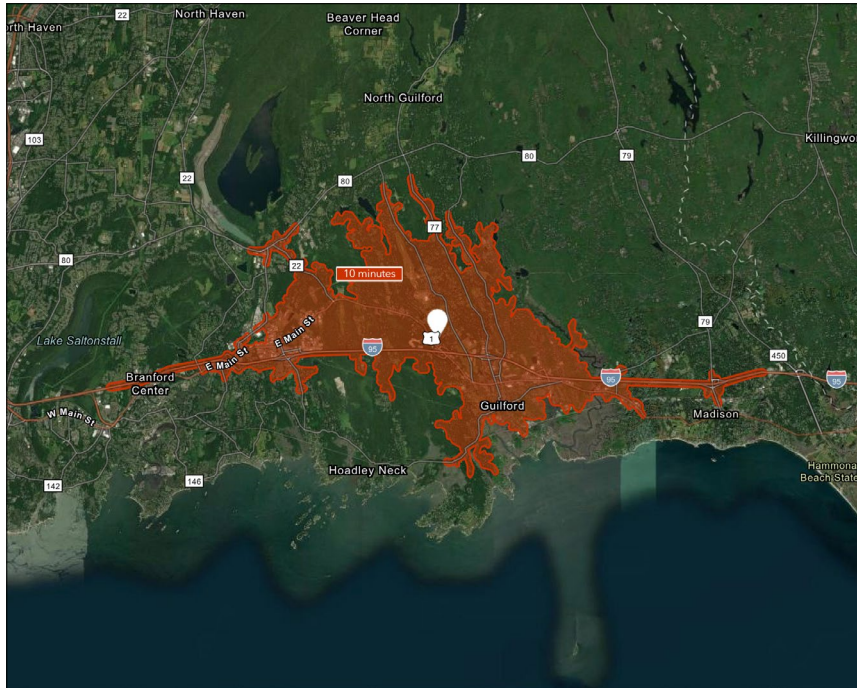
CHARTER REALTY

Information contained in this document has been reviewed and approved by Charter Realty; however, errors sometimes occur. Charter disclaims any warranty of any kind, expressed or implied, as to any matter whatsoever relating to this service. In no event shall Charter be liable for any indirect, special, incidental or consequential damages arising out of any use of or reliance on any content or materials contained herein.

GUILFORD COMMONS

1919 BOSTON POST ROAD | GUILFORD, CT 06437

10 MINUTE DRIVE TIME



KEY FACTS

10,534

Population

\$107,056

Median Household Income

50.9

Median Age

17,839

Daytime Population

TAPESTRY SEGMENTS

Exurbanites

1,496 Households

Socioeconomic Traits

This labor force is beginning to retire. Participation has declined to less than 60%. Residents are college educated; nearly 81% have some college education.

Household Types

A larger market of empty nesters, married couples with no children; average household size is 2.50.

Typical Housing

Single Family

Savvy Suburbanites

1,417 Households

Socioeconomic Traits

Residents are well educated, well read, and well capitalized. Families include empty nesters. Higher labor force participation rate at 67.9%.

Household Types

Married couples with no children or older children; average household size is 2.85.

Typical Housing

Single Family

Golden Years

580 Households

Socioeconomic Traits

Independent, active seniors nearing the end of their careers or already in retirement. Older market w/ Median age of 52. Nearly 32% of residents aged 65 or older.

Household Types

Single-person households and married-couple families w/ no children.

Typical Housing

Single Family; Multi-units

TOTAL RETAIL SALES

Includes F&B



\$154,205,118

EDUCATION

Bachelor's Degree or Higher



57%

OWNER OCCUPIED HOME VALUE

Average



\$506,865

ANNUAL HOUSEHOLD SPENDING

\$5,306

Eating Out

\$3,146

Apparel & Services

\$9,724

Groceries

\$368

Computer & Hardware

\$10,865

Health Care

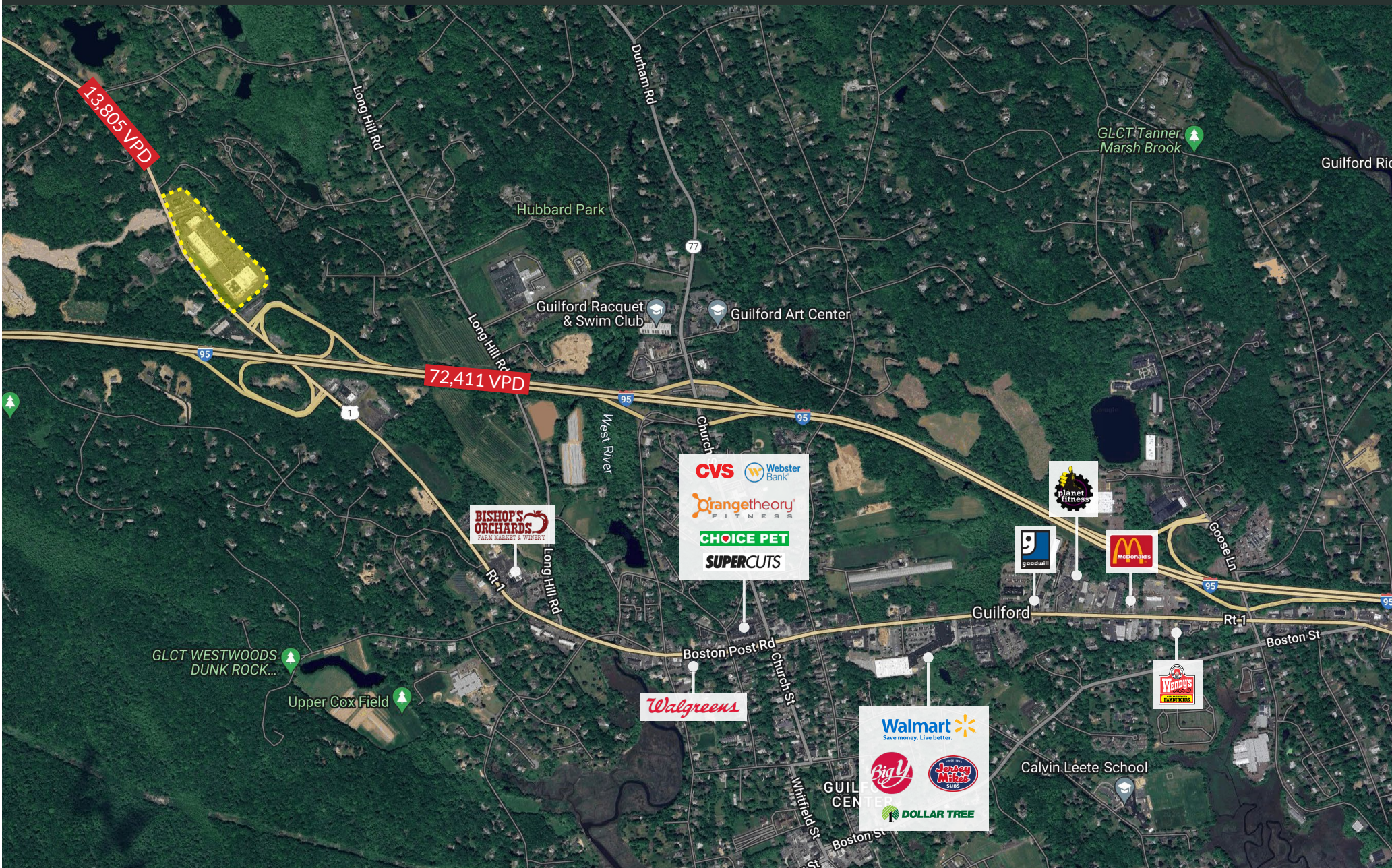


CHARTER REALTY

Information contained in this document has been reviewed and approved by Charter Realty; however, errors sometimes occur. Charter disclaims any warranty of any kind, expressed or implied, as to any matter whatsoever relating to this service. In no event shall Charter be liable for any indirect, special, incidental or consequential damages arising out of any use of or reliance on any content or materials contained herein.

GUILFORD COMMONS

1919 BOSTON POST ROAD | GUILFORD, CT 06437



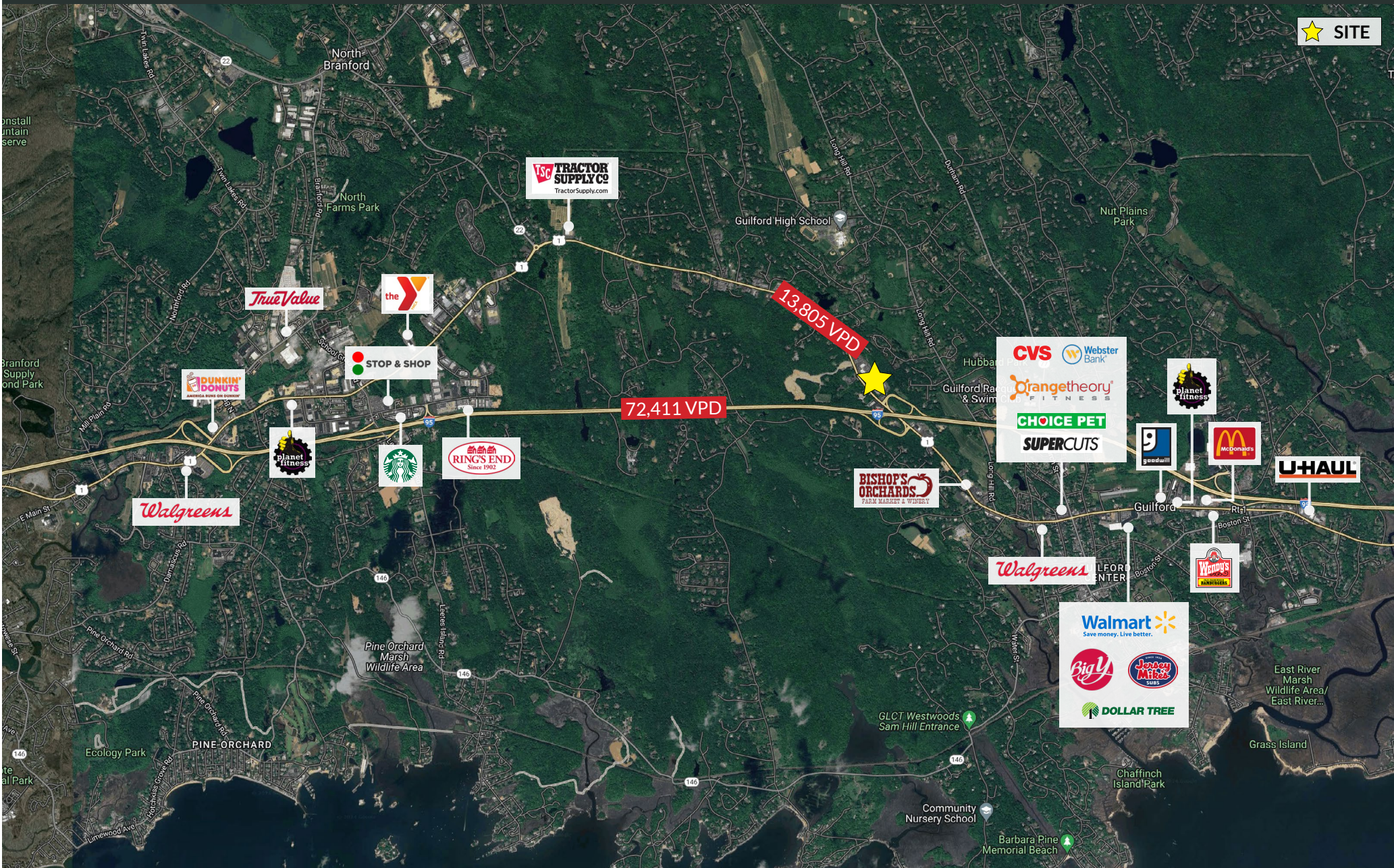
CHARTER REALTY

Information contained in this document has been reviewed and approved by Charter Realty; however, errors sometimes occur. Charter disclaims any warranty of any kind, expressed or implied, as to any matter whatsoever relating to this service. In no event shall Charter be liable for any indirect, special, incidental or consequential damages arising out of any use of or reliance on any content or materials contained herein.

GUILFORD COMMONS

1919 BOSTON POST ROAD | GUILFORD, CT 06437

★ SITE



CHARTER REALTY

Information contained in this document has been reviewed and approved by Charter Realty; however, errors sometimes occur. Charter disclaims any warranty of any kind, expressed or implied, as to any matter whatsoever relating to this service. In no event shall Charter be liable for any indirect, special, incidental or consequential damages arising out of any use of or reliance on any content or materials contained herein.

GUILFORD COMMONS

1919 BOSTON POST ROAD | GUILFORD, CT 06437



CHARTER REALTY

Information contained in this document has been reviewed and approved by Charter Realty; however, errors sometimes occur. Charter disclaims any warranty of any kind, expressed or implied, as to any matter whatsoever relating to this service. In no event shall Charter be liable for any indirect, special, incidental or consequential damages arising out of any use of or reliance on any content or materials contained herein.