

GUILFORD COMMONS

1919 BOSTON POST ROAD | GUILFORD, CT 06437

100% LEASED

ANCHORED BY



PROPERTY INFORMATION

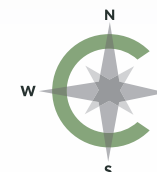
- CT Premier shoreline property
- 123,000 SF - Anchored by Fresh Market
- New Deals with TJ Maxx, Old Navy
- Also join Michael's, Petco, Ulta and Pure Barre
- Great I-95 exposure

SPACE DETAILS

100% Leased

AREA DEMOGRAPHICS

2025 DEMOGRAPHICS	5 MILE	7 MILE	10 MILE
POPULATION	40,342	69,509	169,681
MEDIAN HH INC	\$140,174	\$131,902	\$107,700
AVERAGE HH INC	\$194,042	\$182,732	\$143,833



**CHARTER
REALTY**

www.CharterRealty.com

FOR MORE INFORMATION CONTACT:

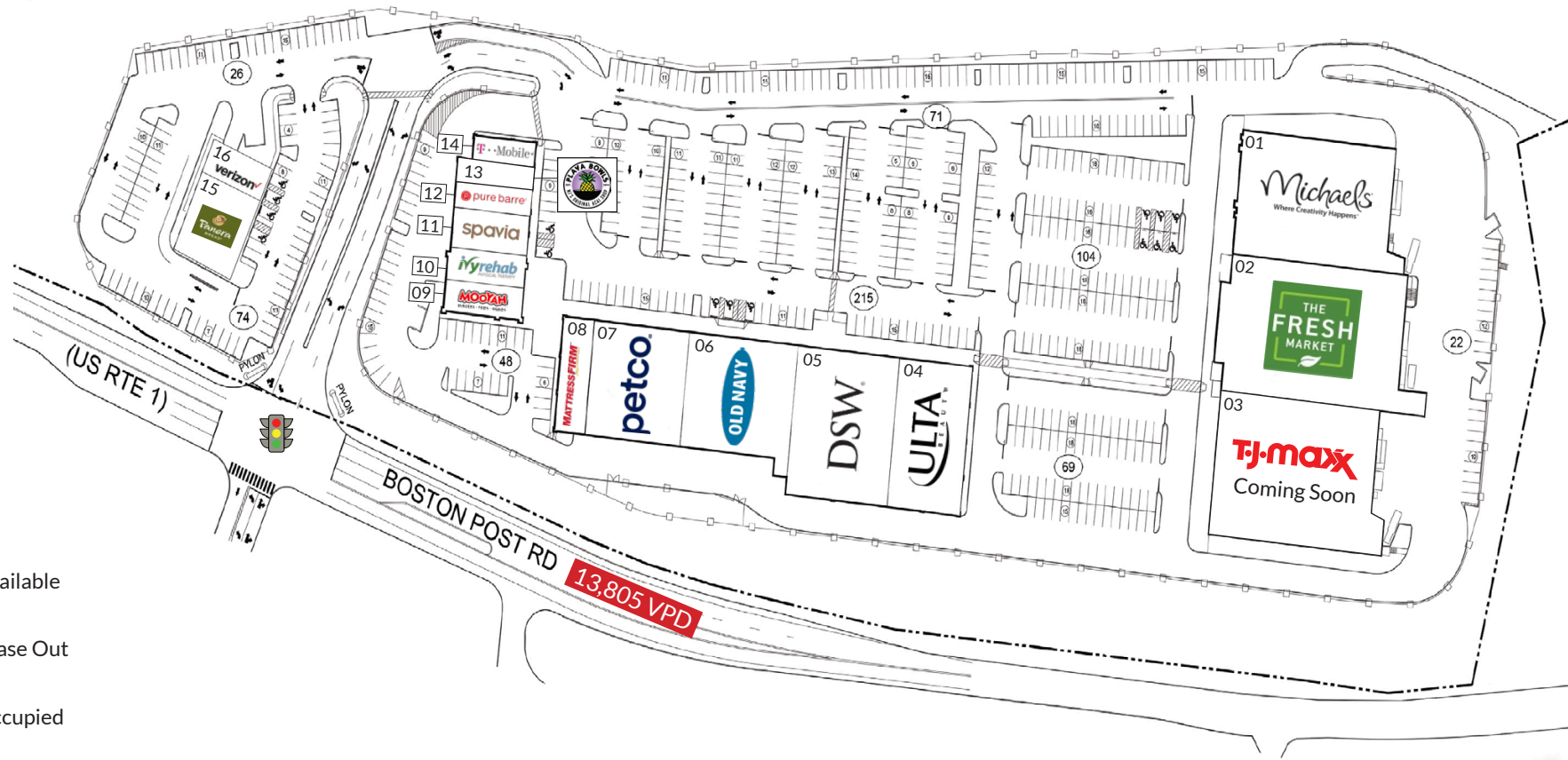
ASHER ZELSON | 203.653.8186 | Asher@CharterRealty.com

GUILFORD COMMONS

1919 BOSTON POST ROAD | GUILFORD, CT 06437

TENANTS / AVAILABILITY

#	TENANT	#	TENANT	#	TENANT
01	Michael's	06	Old Navy	12	Pure Barre
02	The Fresh Market	07	Petco	13	Playa Bowls - Coming Soon
03	TJ Maxx Coming Soon	08	Mattress Firm	14	T Mobile
04	Ulta	09	Mooyah	15	Panera
05	DSW	10	Ivy Rehab	16	Verizon
		11	Spavia		



- Available
- Lease Out
- Occupied



CHARTER REALTY

Information contained in this document has been reviewed and approved by Charter Realty; however, errors sometimes occur. Charter disclaims any warranty of any kind, expressed or implied, as to any matter whatsoever relating to this service. In no event shall Charter be liable for any indirect, special, incidental or consequential damages arising out of any use of or reliance on any content or materials contained herein.

GUILFORD COMMONS

1919 BOSTON POST ROAD | GUILFORD, CT 06437

TRADE AREA DEMOGRAPHICS

5 MILE RADIUS:



Total Population: **40,342**

Households: **16,538**

Daytime Population: **35,187**

Median Age: **47.2**



Average Household Income: **\$194,042**

Median Household Income: **\$140,174**

7 MILE RADIUS:



Total Population: **69,509**

Households: **29,505**

Daytime Population: **57,021**

Median Age: **47.3**



Average Household Income: **\$182,732**

Median Household Income: **\$131,902**

10 MILE RADIUS:



Total Population: **169,681**

Households: **70,658**

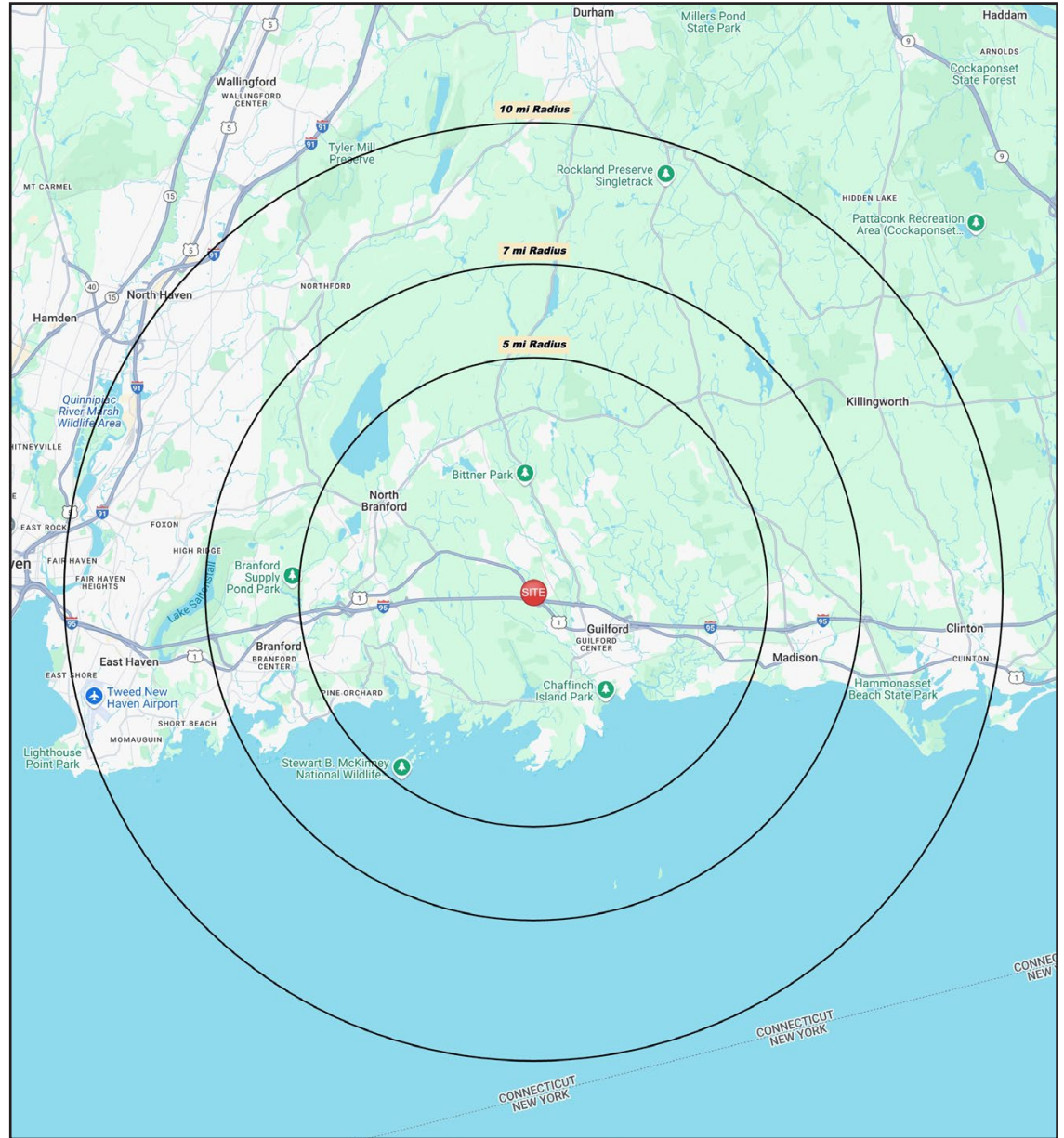
Daytime Population: **121,106**

Median Age: **45.3**



Average Household Income: **\$143,833**

Median Household Income: **\$107,700**



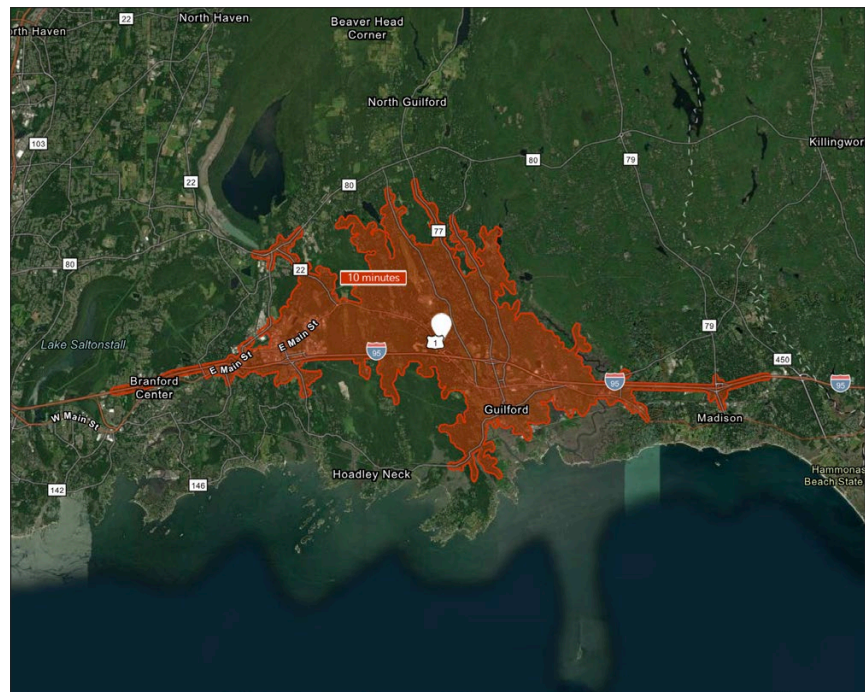
CHARTER REALTY

Information contained in this document has been reviewed and approved by Charter Realty; however, errors sometimes occur. Charter disclaims any warranty of any kind, expressed or implied, as to any matter whatsoever relating to this service. In no event shall Charter be liable for any indirect, special, incidental or consequential damages arising out of any use of or reliance on any content or materials contained herein.

GUILFORD COMMONS

1919 BOSTON POST ROAD | GUILFORD, CT 06437

10 MINUTE DRIVE TIME



KEY FACTS

12,918

Population

\$116,281

Median Household Income

50.9

Median Age

20,712

Daytime Population

TAPESTRY SEGMENTS

Burbs and Beyond

2,487 households

Socioeconomic Traits

Predominantly in the West, these affluent, older communities feature married couples without children, high self-employment, and second homes near nature. Many homes exceed \$500K, with seasonal vacancies and multiple vehicles.

Household Types

Married couples with no kids

Typical Housing

Single Family

Savvy Suburbanites

1,576 households

Socioeconomic Traits

Concentrated in New England and Mid-Atlantic suburbs, these mostly owner-occupied, single-family homes house professional families with children. Combined incomes and investments place households in middle to upper tiers with high net worth.

Household Types

Married couples

Typical Housing

Single Family

Retirement Communities

867 households

Socioeconomic Traits

Nationwide suburban neighborhoods with many seniors and single households. Residents rely on retirement, investments, and wages, working in professional fields. Homes vary, with above-average net worth and higher-than-average rent prices.

Household Types

Singles living alone; married couples with no kids

Typical Housing

Multi-Units

TOTAL RETAIL SALES

Includes F&B



\$154,205,118

EDUCATION

Bachelor's Degree
or Higher



54%

OWNER OCCUPIED HOME VALUE

Average



\$628,357

ANNUAL HOUSEHOLD SPENDING

\$5,576

Eating
Out

\$3,278

Apparel &
Services

\$9,862

Groceries

\$311

Computer &
Hardware

\$10,797

Health
Care

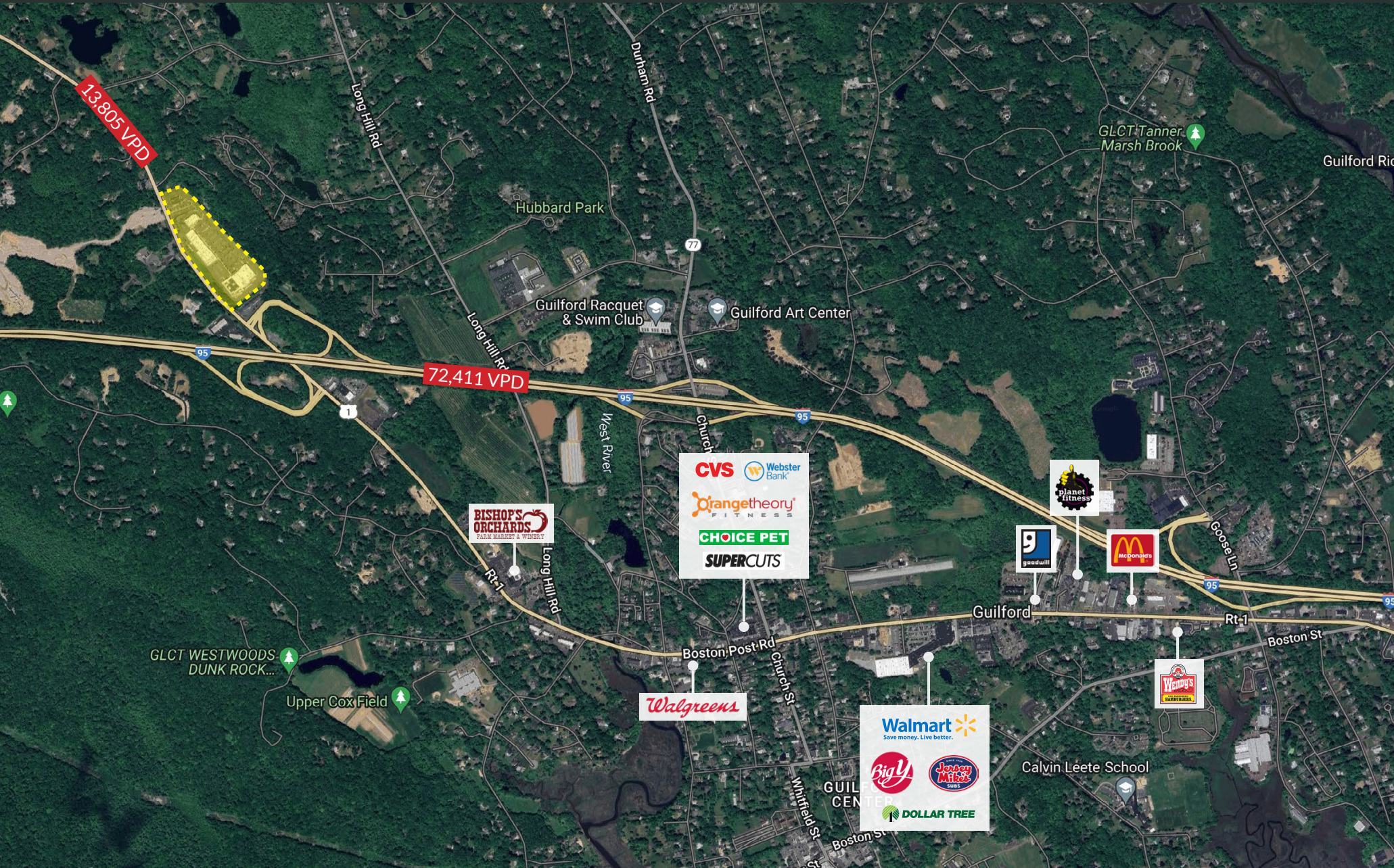


CHARTER REALTY

Information contained in this document has been reviewed and approved by Charter Realty; however, errors sometimes occur. Charter disclaims any warranty of any kind, expressed or implied, as to any matter whatsoever relating to this service. In no event shall Charter be liable for any indirect, special, incidental or consequential damages arising out of any use of or reliance on any content or materials contained herein.

GUILFORD COMMONS

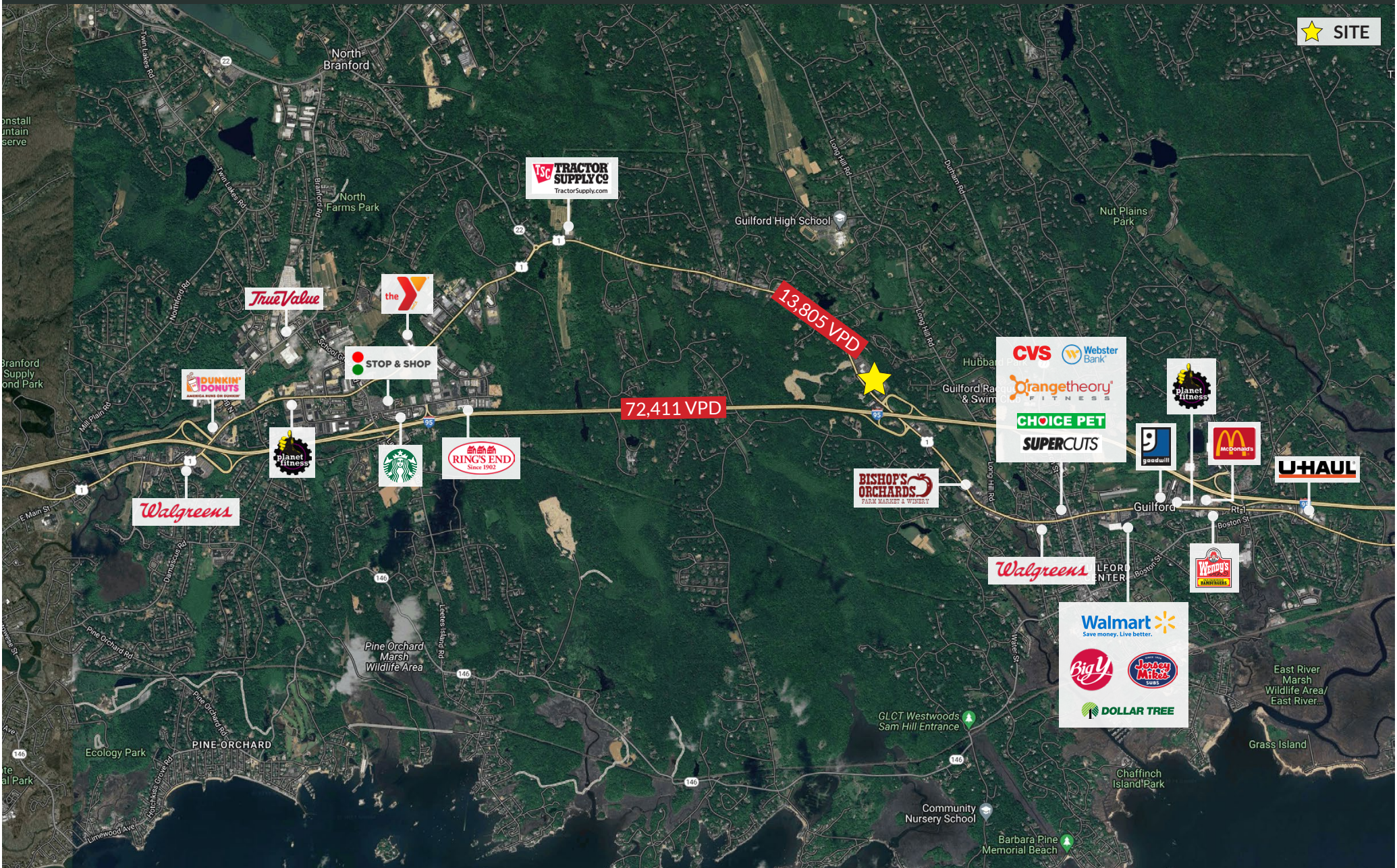
1919 BOSTON POST ROAD | GUILFORD, CT 06437



CHARTER REALTY
Information contained in this document has been reviewed and approved by Charter Realty; however, errors sometimes occur. Charter disclaims any warranty of any kind, expressed or implied, as to any matter whatsoever relating to this service. In no event shall Charter be liable for any indirect, special, incidental or consequential damages arising out of any use of or reliance on any content or materials contained herein.

GUILFORD COMMONS

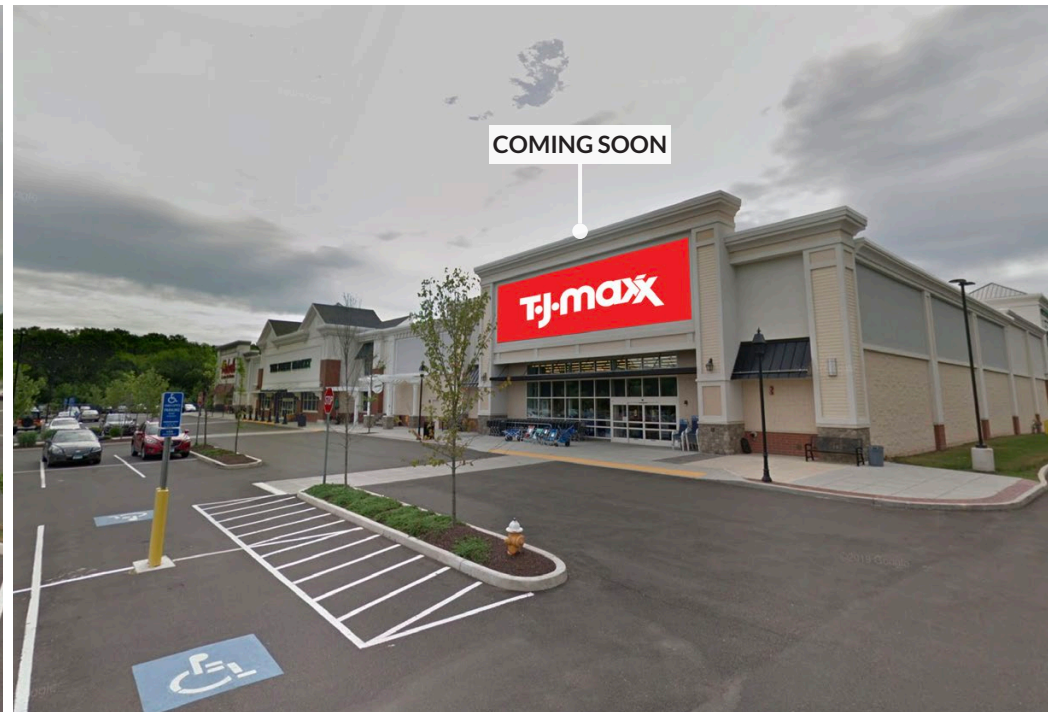
1919 BOSTON POST ROAD | GUILFORD, CT 06437



CHARTER REALTY
Information contained in this document has been reviewed and approved by Charter Realty; however, errors sometimes occur. Charter disclaims any warranty of any kind, expressed or implied, as to any matter whatsoever relating to this service. In no event shall Charter be liable for any indirect, special, incidental or consequential damages arising out of any use of or reliance on any content or materials contained herein.

GUILFORD COMMONS

1919 BOSTON POST ROAD | GUILFORD, CT 06437



CHARTER REALTY

Information contained in this document has been reviewed and approved by Charter Realty; however, errors sometimes occur. Charter disclaims any warranty of any kind, expressed or implied, as to any matter whatsoever relating to this service. In no event shall Charter be liable for any indirect, special, incidental or consequential damages arising out of any use of or reliance on any content or materials contained herein.