

NORWOOD RETAIL

911 BOSTON PROVIDENCE HWY | NORWOOD, MA 02062

AVAILABLE APPROX. 7,200 SF & 22,377 SF

ANCHORED BY



PROPERTY INFORMATION

- Located on the highly trafficked Route One corridor in the dense regional Norwood/ Dedham/ Westwood market, 911 Bos/Prov offers a rare opportunity to occupy medium or large contiguous format clear span space in a highly sought after market. In addition, the space has 18' clear height with ample parking and covered parking.
- Easy access to I-95 and I-93
- Traffic Count:
Boston Providence Hwy - 45,070 VPD

AVAILABLE SPACE

- Available approx. 7,200 sf & 22,377 sf

AREA DEMOGRAPHICS

2025 DEMOGRAPHICS	1 MILE	3 MILE	5 MILE
POPULATION	12,210	59,704	130,348
MEDIAN HH INC	\$103,987	\$143,522	\$151,422
AVERAGE HH INC	\$152,678	\$186,043	\$193,805



**CHARTER
REALTY**

www.CharterRealty.com

FOR MORE INFORMATION CONTACT:

JEFF ARSENAULT | 781.771.9867 | JeffA@CharterRealty.com

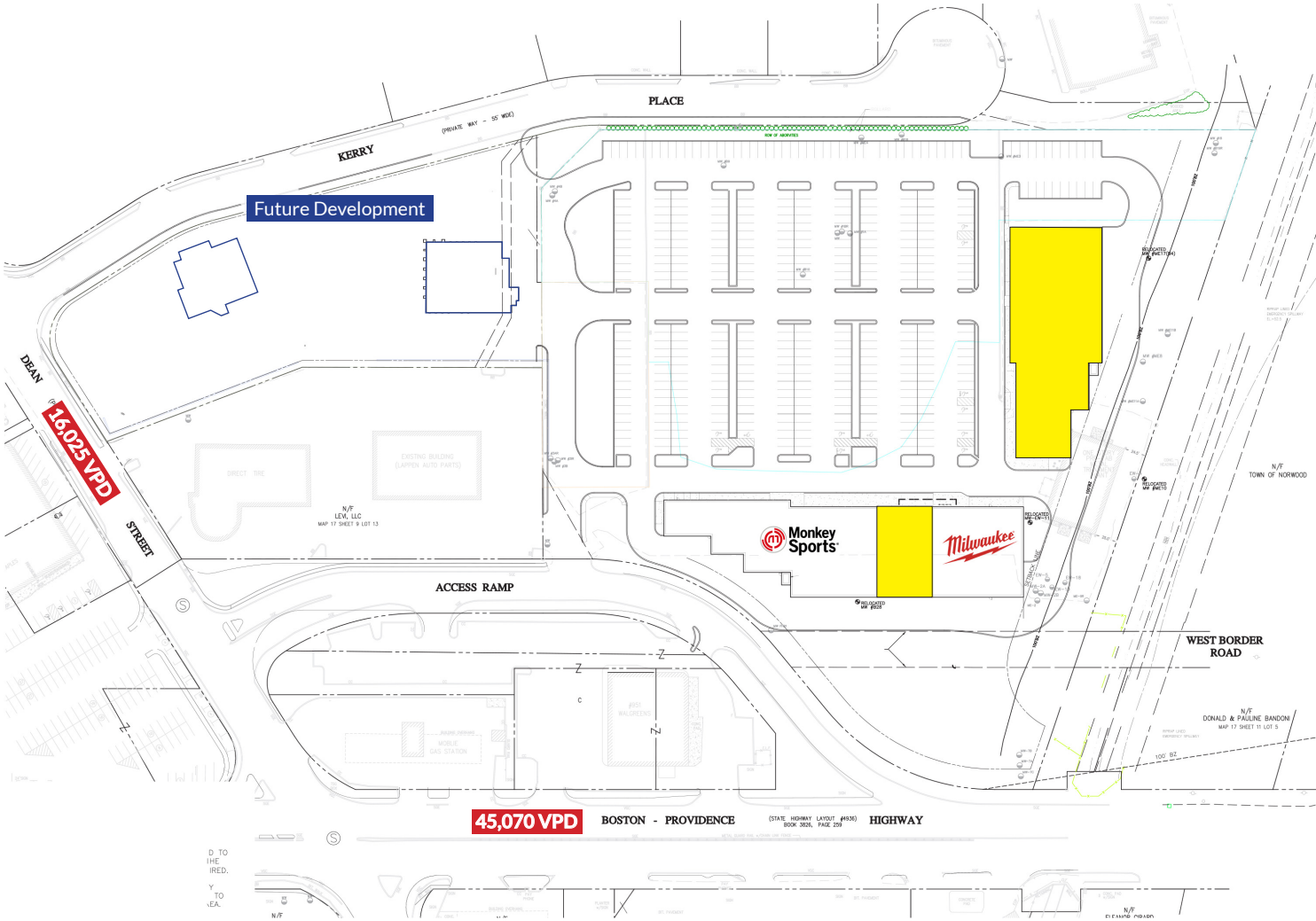
NORWOOD RETAIL

911 BOSTON PROVIDENCE HWY | NORWOOD, MA 02062

TENANTS / AVAILABILITY

#	TENANT
01	Available - 22,377 sf
02	Milwaukee Tools
03	Available - 7,200 sf
04	Monkey Sports

- Available
- Lease Out
- Occupied



CHARTER REALTY
Information contained in this document has been reviewed and approved by Charter Realty; however, errors sometimes occur. Charter disclaims any warranty of any kind, expressed or implied, as to any matter whatsoever relating to this service. In no event shall Charter be liable for any indirect, special, incidental or consequential damages arising out of any use of or reliance on any content or materials contained herein.

NORWOOD RETAIL

911 BOSTON PROVIDENCE HWY | NORWOOD, MA 02062

TRADE AREA DEMOGRAPHICS

1 MILE RADIUS:



Total Population: **12,210**

Households: **5,142**

Daytime Population: **13,417**

Median Age: **41.4**



Average Household Income: **\$152,678**

Median Household Income: **\$103,987**

3 MILE RADIUS:



Total Population: **59,704**

Households: **23,350**

Daytime Population: **60,412**

Median Age: **41.6**



Average Household Income: **\$186,043**

Median Household Income: **\$143,522**

5 MILE RADIUS:



Total Population: **130,348**

Households: **50,283**

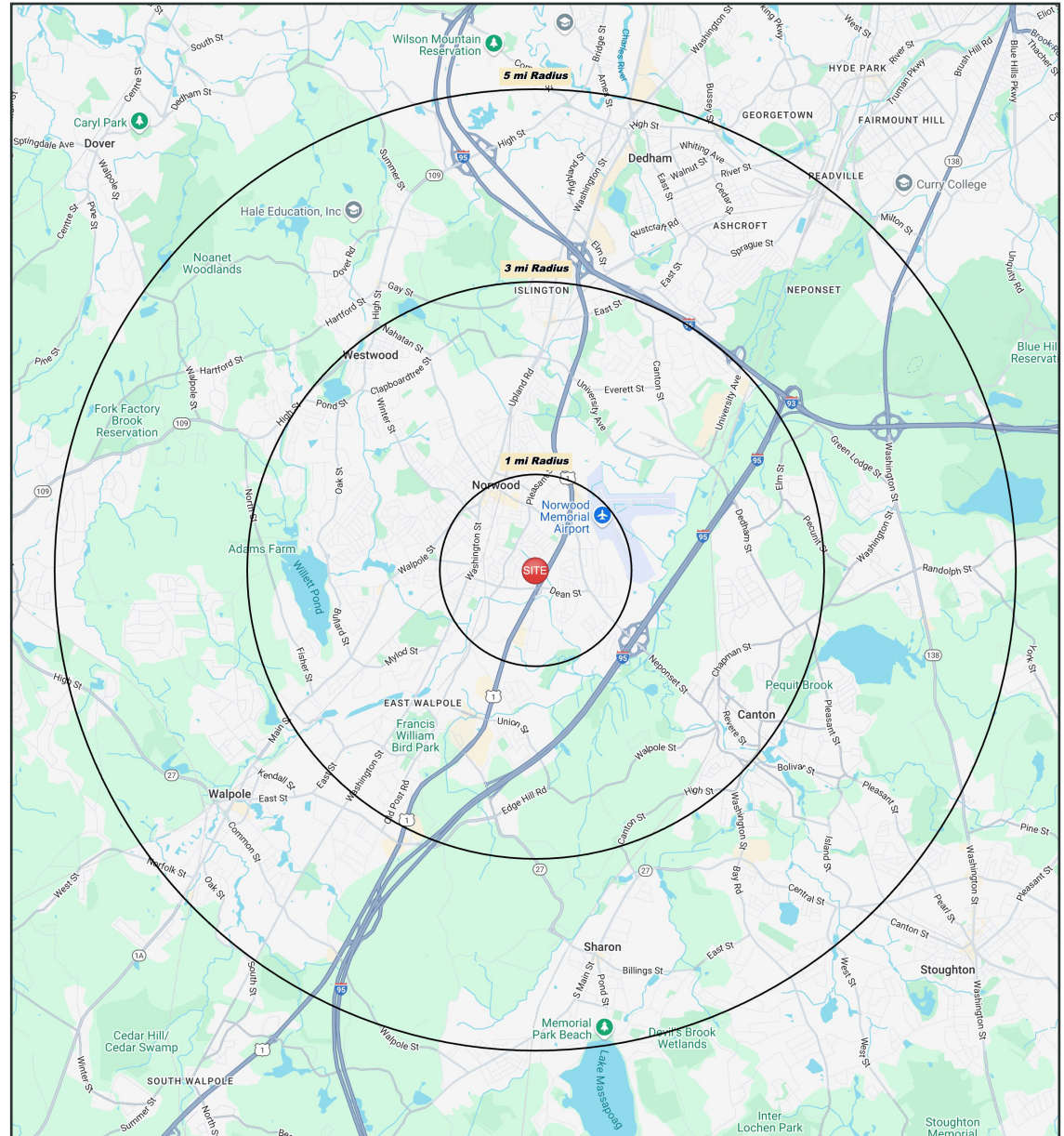
Daytime Population: **122,789**

Median Age: **42.4**



Average Household Income: **\$193,805**

Median Household Income: **\$151,422**



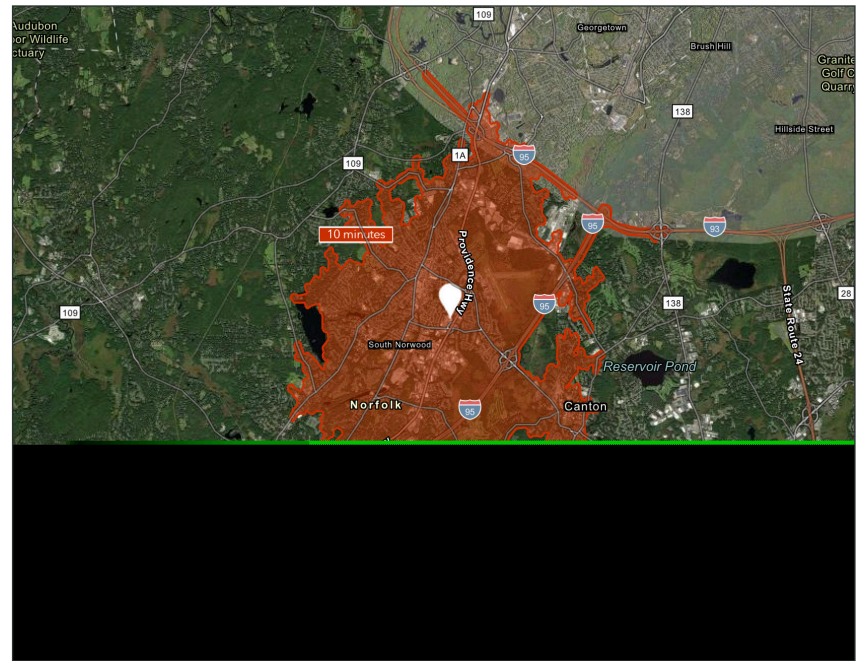
CHARTER REALTY

Information contained in this document has been reviewed and approved by Charter Realty; however, errors sometimes occur. Charter disclaims any warranty of any kind, expressed or implied, as to any matter whatsoever relating to this service. In no event shall Charter be liable for any indirect, special, incidental or consequential damages arising out of any use of or reliance on any content or materials contained herein.

NORWOOD RETAIL

911 BOSTON PROVIDENCE HWY | NORWOOD, MA 02062

10 MINUTE DRIVE TIME



KEY FACTS

48,689

Population

\$109,916

Median Household Income

43.3

Median Age

59,697

Daytime Population

TAPESTRY SEGMENTS

City Lights

8,730 Households

Socioeconomic Traits

Residents work hard in professional and service occupations but also seek to enjoy life. They earn above average incomes.

Household Types

Families, both married couples and single parents, as well as singles.

Typical Housing

Multi-units; Single Family

Pleasantville

4,534 Households

Socioeconomic Traits

66% college educated. Higher labor force participation rate. Many professionals in finance, information/ technology, education, or management.

Household Types

Older married-couple families, more w/o children under 18, but many w/ children over 18. years

Typical Housing

Single Family

Savvy Suburbanites

1,855 Households

Socioeconomic Traits

Residents are well educated, well read, and well capitalized. Families include empty nesters. Higher labor force participation rate at 67.9%.

Household Types

Married couples with no children or older children; average household size is 2.85.

Typical Housing

Single Family

TOTAL RETAIL SALES

Includes F&B



\$636,260,735

EDUCATION

Bachelor's Degree
or Higher



59%

OWNER OCCUPIED HOME VALUE

Average



\$682,380

ANNUAL HOUSEHOLD SPENDING

\$5,129

Eating
Out

\$3,145

Apparel &
Services

\$9,554

Groceries

\$367

Computer &
Hardware

\$9,471

Health
Care



CHARTER REALTY

Information contained in this document has been reviewed and approved by Charter Realty; however, errors sometimes occur. Charter disclaims any warranty of any kind, expressed or implied, as to any matter whatsoever relating to this service. In no event shall Charter be liable for any indirect, special, incidental or consequential damages arising out of any use of or reliance on any content or materials contained herein.

NORWOOD RETAIL

911 BOSTON PROVIDENCE HWY | NORWOOD, MA 02062

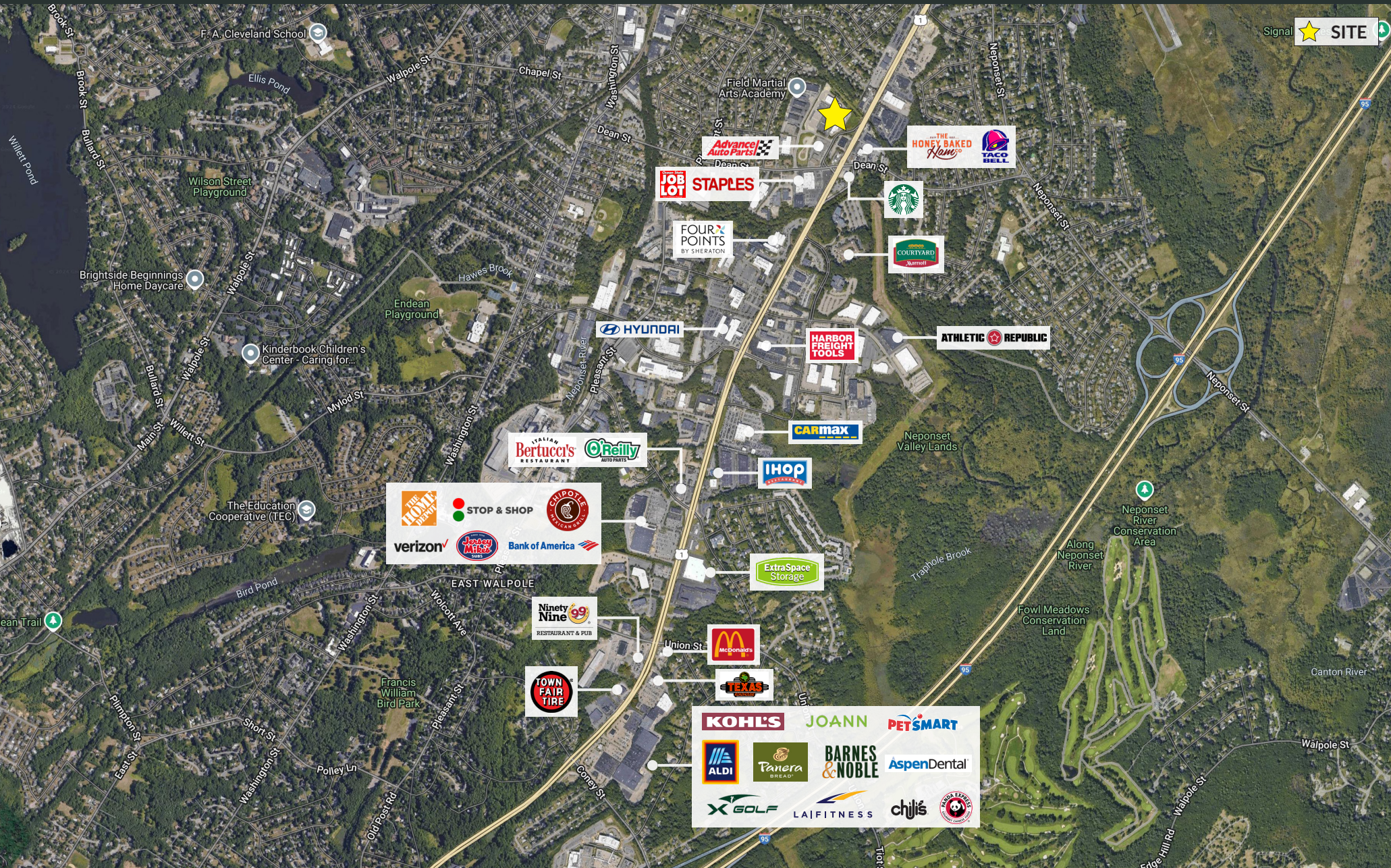


CHARTER REALTY

Information contained in this document has been reviewed and approved by Charter Realty; however, errors sometimes occur. Charter disclaims any warranty of any kind, expressed or implied, as to any matter whatsoever relating to this service. In no event shall Charter be liable for any indirect, special, incidental or consequential damages arising out of any use of or reliance on any content or materials contained herein.

NORWOOD RETAIL

911 BOSTON PROVIDENCE HWY | NORWOOD, MA 02062



NORWOOD RETAIL

911 BOSTON PROVIDENCE HWY | NORWOOD, MA 02062



CHARTER REALTY

Information contained in this document has been reviewed and approved by Charter Realty; however, errors sometimes occur. Charter disclaims any warranty of any kind, expressed or implied, as to any matter whatsoever relating to this service. In no event shall Charter be liable for any indirect, special, incidental or consequential damages arising out of any use of or reliance on any content or materials contained herein.