

NORWOOD RETAIL

911 BOSTON PROVIDENCE HWY | NORWOOD, MA 02062

AVAILABLE APPROX. 7,200 SF & 22,377 SF

ANCHORED BY



PROPERTY INFORMATION

- Located on the highly trafficked Route One corridor in the dense regional Norwood/ Dedham/ Westwood market, 911 Bos/Prov offers a rare opportunity to occupy medium or large contiguous format clear span space in a highly sought after market. In addition, the space has 18' clear height with ample parking and covered parking.
- Easy access to I-95 and I-93
- Traffic Count:
Boston Providence Hwy - 45,070 VPD

AVAILABLE SPACE

- Available approx. 7,200 sf & 22,377 sf

AREA DEMOGRAPHICS

2025 DEMOGRAPHICS	1 MILE	3 MILE	5 MILE
POPULATION	12,210	59,704	130,348
MEDIAN HH INC	\$103,987	\$143,522	\$151,422
AVERAGE HH INC	\$152,678	\$186,043	\$193,805



**CHARTER
REALTY**

www.CharterRealty.com

FOR MORE INFORMATION CONTACT:

JEFF ARSENAULT | 781.771.9867 | JeffA@CharterRealty.com

NORWOOD RETAIL

911 BOSTON PROVIDENCE HWY | NORWOOD, MA 02062

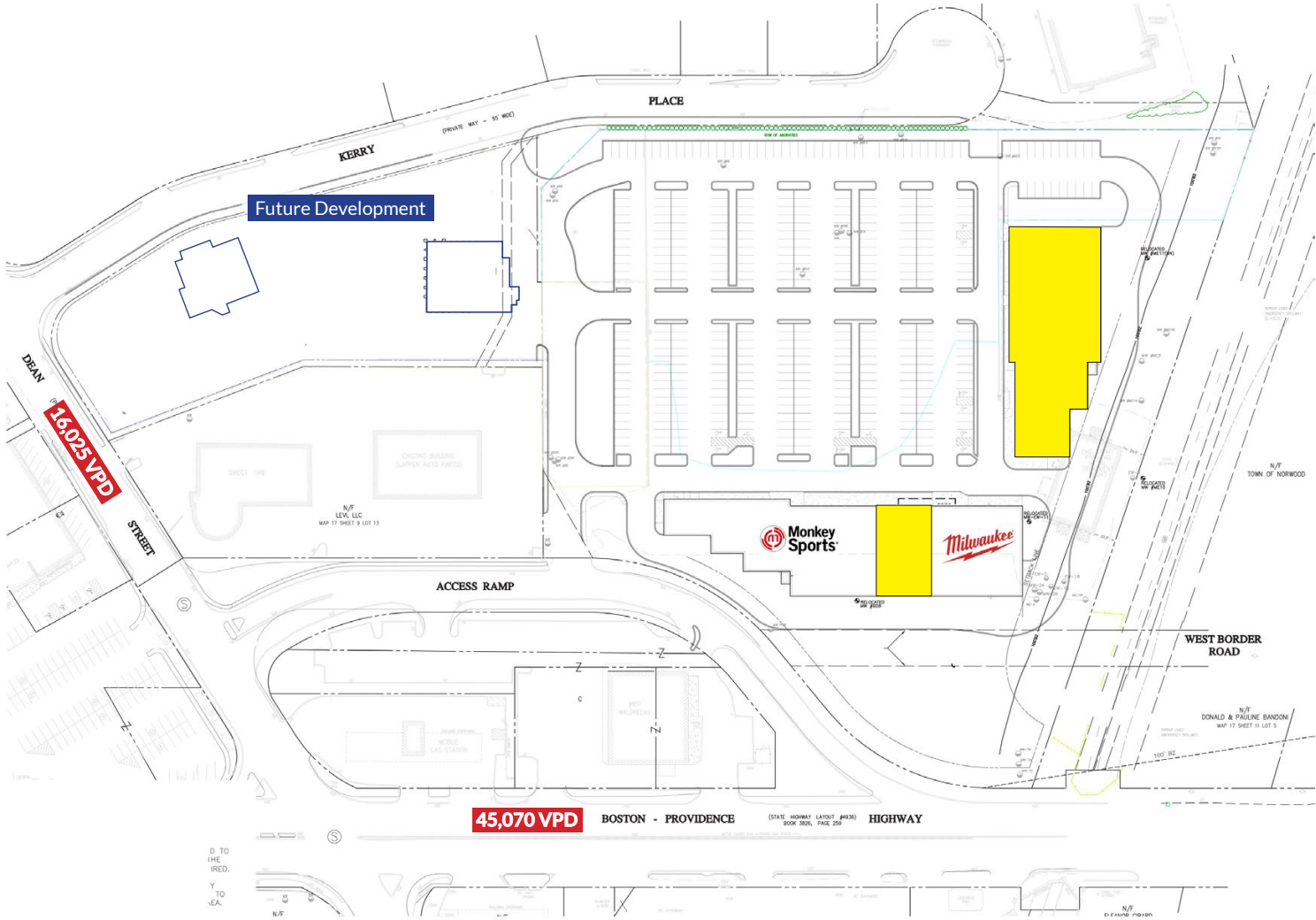
TENANTS / AVAILABILITY

#	TENANT
01	Available - 22,377 sf
02	Milwaukee Tools
03	Available - 7,200 sf
04	Monkey Sports

Available

Lease Out

Occupied



CHARTER REALTY
Information contained in this document has been reviewed and approved by Charter Realty; however, errors sometimes occur. Charter disclaims any warranty of any kind, expressed or implied, as to any matter whatsoever relating to this service. In no event shall Charter be liable for any indirect, special, incidental or consequential damages arising out of any use of or reliance on any content or materials contained herein.

NORWOOD RETAIL

911 BOSTON PROVIDENCE HWY | NORWOOD, MA 02062

TRADE AREA DEMOGRAPHICS

1 MILE RADIUS:



Total Population: **12,210**

Households: **5,142**

Daytime Population: **13,417**

Median Age: **41.4**



Average Household Income: **\$152,678**

Median Household Income: **\$103,987**

3 MILE RADIUS:



Total Population: **59,704**

Households: **23,350**

Daytime Population: **60,412**

Median Age: **41.6**



Average Household Income: **\$186,043**

Median Household Income: **\$143,522**

5 MILE RADIUS:



Total Population: **130,348**

Households: **50,283**

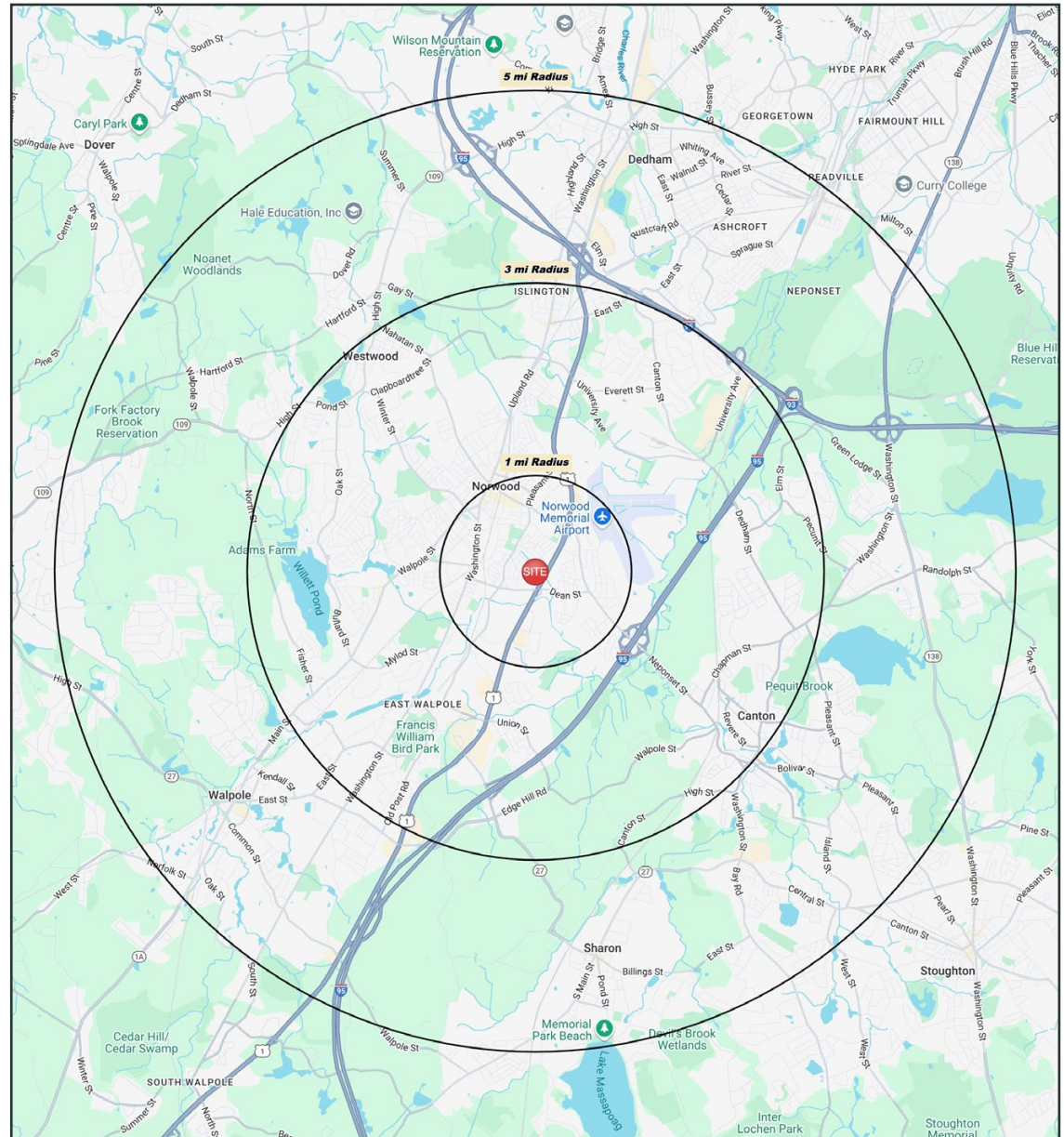
Daytime Population: **122,789**

Median Age: **42.4**



Average Household Income: **\$193,805**

Median Household Income: **\$151,422**



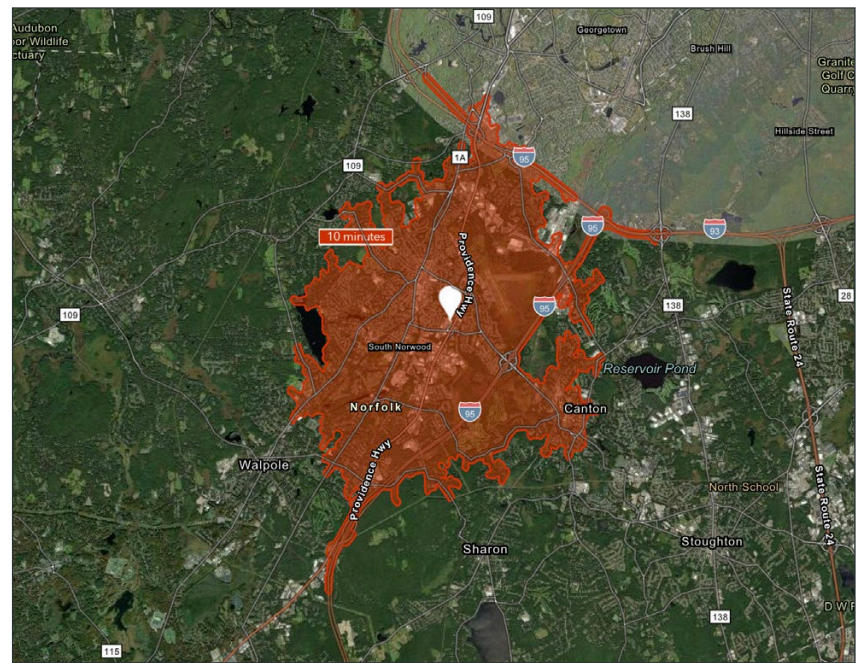
CHARTER REALTY

Information contained in this document has been reviewed and approved by Charter Realty; however, errors sometimes occur. Charter disclaims any warranty of any kind, expressed or implied, as to any matter whatsoever relating to this service. In no event shall Charter be liable for any indirect, special, incidental or consequential damages arising out of any use of or reliance on any content or materials contained herein.

NORWOOD RETAIL

911 BOSTON PROVIDENCE HWY | NORWOOD, MA 02062

10 MINUTE DRIVE TIME



KEY FACTS

45,954

Population

\$125,066

Median Household Income

42.2

Median Age

56,861

Daytime Population

TAPESTRY SEGMENTS

Urban Chic

4,532 households

Uptown Lights

3,224 households

Top Tier

2,898 households

Socioeconomic Traits

Primarily in coastal suburbs, these affluent, educated families—often with young children—work in professional fields. Many own high-value homes, earn additional investment income, and have strong net worth and retirement savings.

Socioeconomic Traits

Found in coastal metros like NYC and LA, these diverse, educated neighborhoods include families and singles. Residents earn middle incomes, work in varied fields, often rent older homes, and commute long distances.

Socioeconomic Traits

Concentrated in New England, Mid-Atlantic, and Pacific suburbs, these affluent, educated married couples often have children in private schools. Many are executives or business owners, with high net worth and single-family homes.

Household Types

Married couples;
singles living alone

Household Types

Married couples;
singles living alone

Household Types

Married couples

Typical Housing

Single Family

Typical Housing

Single Family

Typical Housing

Single Family

ANNUAL HOUSEHOLD SPENDING

\$6,274

Eating
Out

\$3,626

Apparel &
Services

\$10,730

Groceries

\$339

Computer &
Hardware

\$10,634

Health
Care

TOTAL RETAIL SALES

Includes F&B



\$707,970,626

EDUCATION

Bachelor's Degree
or Higher



59%

OWNER OCCUPIED HOME VALUE

Average



\$865,783



CHARTER REALTY

Information contained in this document has been reviewed and approved by Charter Realty; however, errors sometimes occur. Charter disclaims any warranty of any kind, expressed or implied, as to any matter whatsoever relating to this service. In no event shall Charter be liable for any indirect, special, incidental or consequential damages arising out of any use of or reliance on any content or materials contained herein.

NORWOOD RETAIL

911 BOSTON PROVIDENCE HWY | NORWOOD, MA 02062

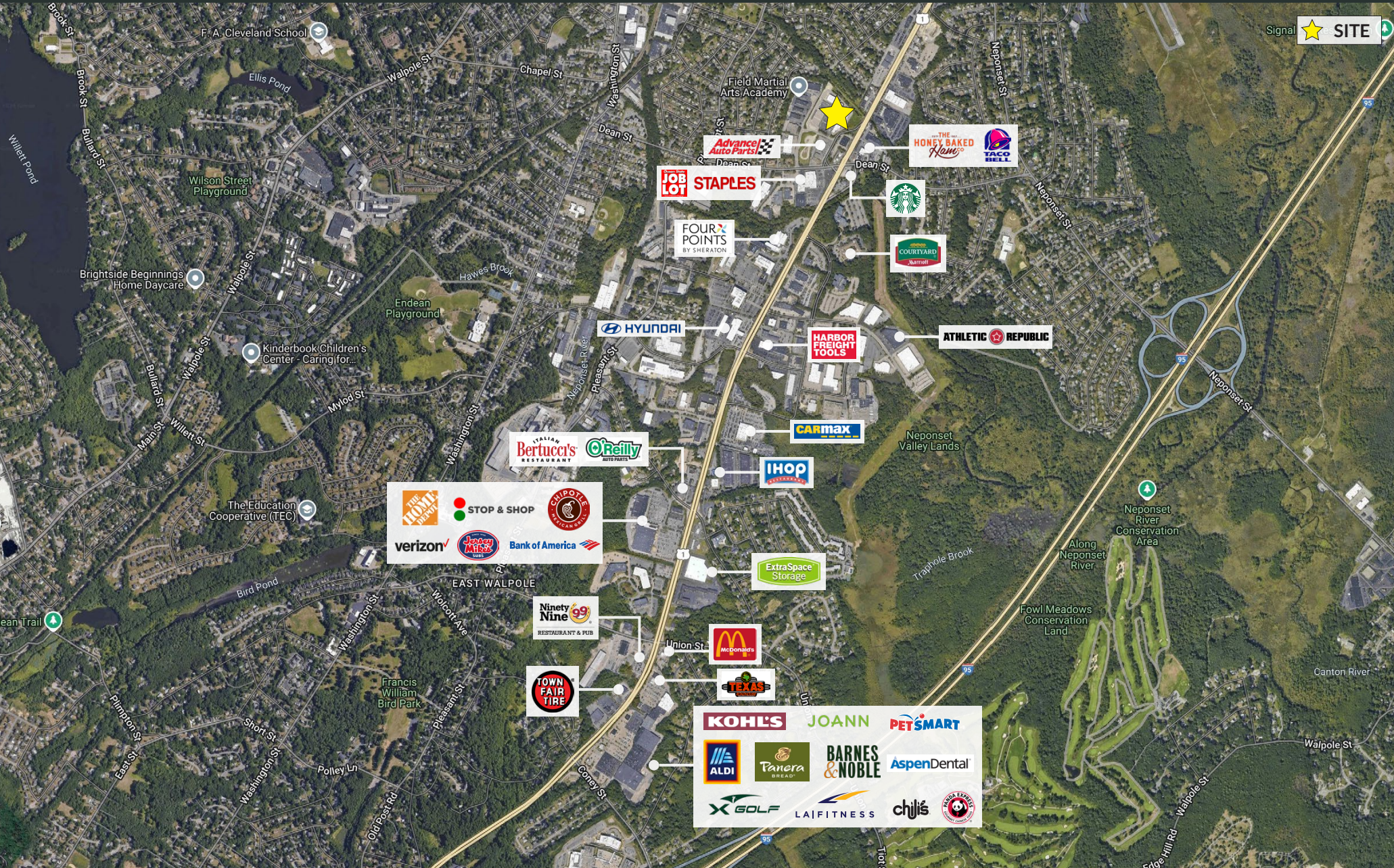


CHARTER REALTY

Information contained in this document has been reviewed and approved by Charter Realty; however, errors sometimes occur. Charter disclaims any warranty of any kind, expressed or implied, as to any matter whatsoever relating to this service. In no event shall Charter be liable for any indirect, special, incidental or consequential damages arising out of any use of or reliance on any content or materials contained herein.

NORWOOD RETAIL

911 BOSTON PROVIDENCE HWY | NORWOOD, MA 02062



NORWOOD RETAIL

911 BOSTON PROVIDENCE HWY | NORWOOD, MA 02062



CHARTER REALTY

Information contained in this document has been reviewed and approved by Charter Realty; however, errors sometimes occur. Charter disclaims any warranty of any kind, expressed or implied, as to any matter whatsoever relating to this service. In no event shall Charter be liable for any indirect, special, incidental or consequential damages arising out of any use of or reliance on any content or materials contained herein.