



Representative Photo

Brand New Development – Absolute NNN 15-Year Corporate Lease – Single-Tenant Drive-Thru

1303 S Pueblo Blvd, Pueblo, CO, 81005



Brand New Development – Absolute NNN 15-Year Corporate Lease – Single- Tenant Drive-Thru

1303 S Pueblo Blvd, Pueblo, CO, 81005



Investment Contact:

Spencer O'Donnell

Managing Director
Charter Realty
Broker License No. 01954051
(714) 400-6267 | spencer@charterrealty.com

Cooperating Broker:

Vince Viverito

Managing Director
SLIB
Broker License No. IR. 100086247
(847) 338-0661 | VinceV@slibinc.com



TABLE OF CONTENTS

Offering Overview	3
Investment Highlights	4
Amenity Map	5
Lease Abstract / Offering Summary	6
Site Plan	7
Building Conceptual	8
Demographics - 5, 10 & 20 Mile Rings	9
Demographics - 30 Minute Drive Time	10
Area Overview	11
Tenant Overview	12-13
City Overview	14
Contacts	15

Investment Overview

We are pleased to present a rare opportunity for qualified investors to acquire a newly constructed Dutch Bros Coffee (NYSE: BROS) in Pueblo, Colorado, under a 15-year absolute NNN lease with 10% increases every 5 years as a hedge against inflation.

Pueblo, known as one of the largest steel-producing cities in the United States, serves as the county seat and principal city of the Pueblo MSA, with a population of 168,162. This site is strategically located on Pueblo Blvd (CO-45), which experiences traffic counts exceeding 26,000 vehicles per day. The property benefits from strong neighboring, traffic-drawing retailers, including Walmart Supercenter, Harbor Freight, Taco Bell, Carl's Jr., Applebee's, McDonald's, Panda Express, and Mister Car Wash.

This offering presents a unique chance to acquire a rare, brand-new, single-tenant asset in a key Colorado market, backed by a long-term lease with zero landlord responsibilities—delivering over 15 years of stable, inflation-resistant income.

Property Details:



Parcel No. (APN)
1509128030



Building Size
950 Sq Ft



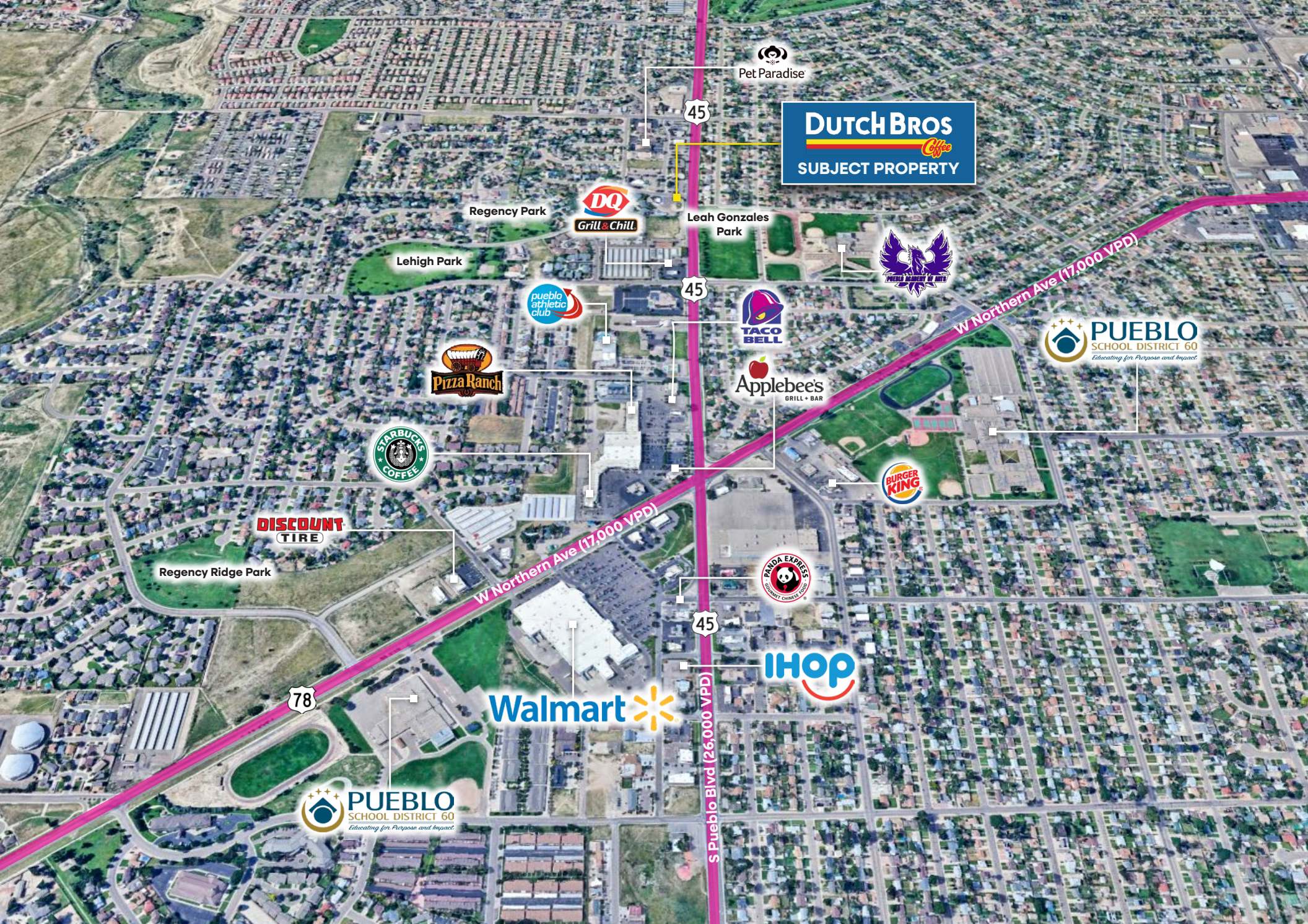
Lot Size
0.61 Acres



Investment Highlights

- ✓ **Dutch Bros – Brand New Construction – Corporate Guaranteed – Boersma Bros. LLC – 15 Year Lease**
- ✓ Excellent Credit Profile – **Publicly Traded (NYSE: BROS)** – Over \$8.23 Billion Market Cap
- ✓ **Rare Colorado Dutch Bros** – Currently Operates 850+ Stores Across the U.S. – 16,000+ Employees
- ✓ **Brand New 2025 Construction – Absolute NNN Lease – Zero Landlord Responsibilities**
- ✓ 10% Rental Increases Every 5 Years – Including Options (Four 5-Year Options)
- ✓ Located on S Pueblo Blvd (CO State Hwy 45) – 26,000 VPD (Vehicles Per Day) – Across from Pueblo Academy of the Arts Middle School
- ✓ **Next to Pueblo South High School**, Centennial Elementary School, and Carmel Community School
- ✓ Nearby Retailers: **Walmart Supercenter**, Harbor Freight, Taco Bell, Carl's Jr, Applebee's, McDonald's, Panda Express, Mister Car Wash
- ✓ Demographics – **Over 86,198 Residents within a 5 Mile Radius**
- ✓ Average Household Income of Over \$87,377 within a 10 Mile Radius





Lease Abstract

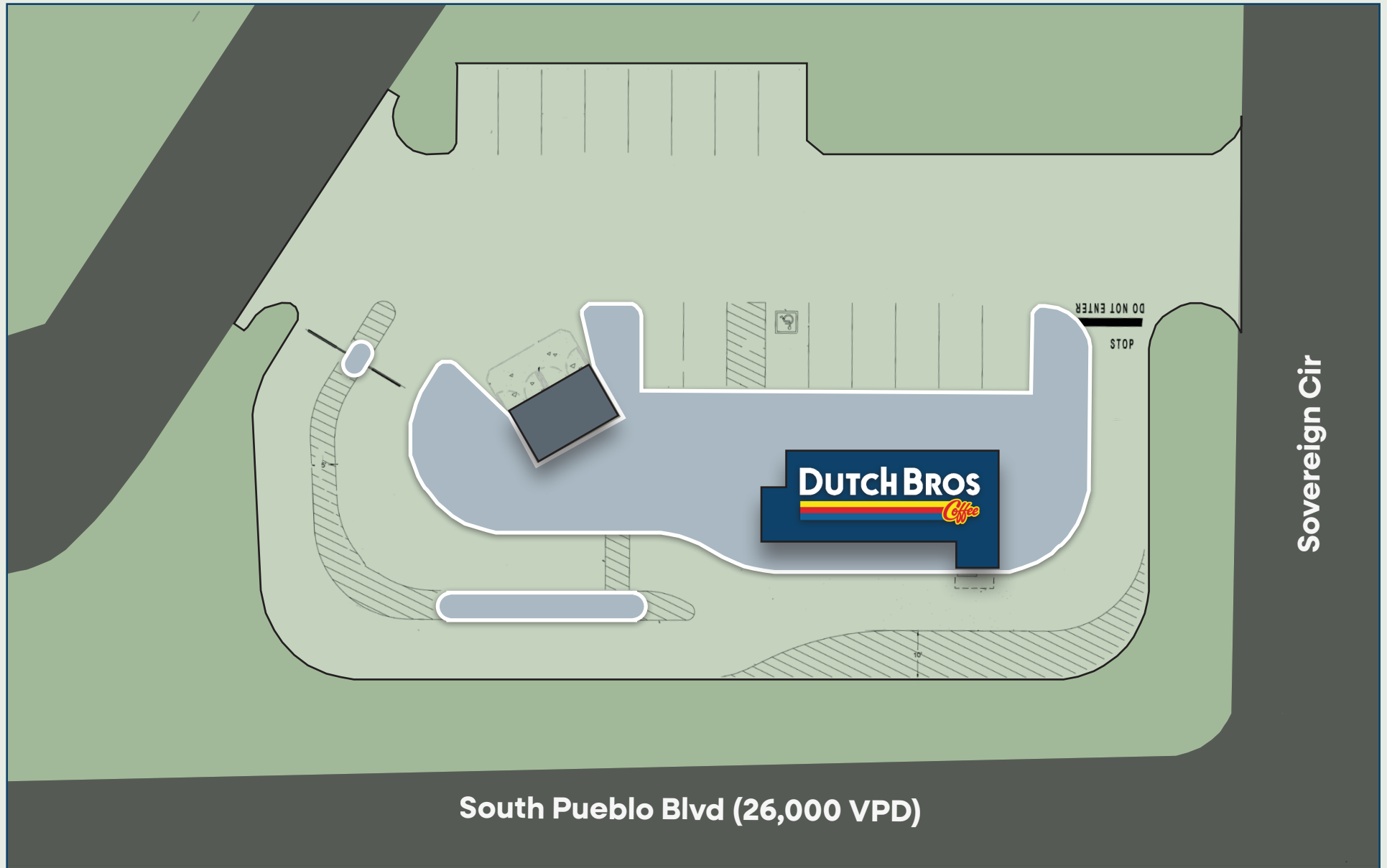
Tenant	Corporate Lease to Broersma Bros. LLC (NYSE: BROS)
Trade Name	Dutch Bros
Lease Type	Absolute NNN (Fee Simple)
Square Footage	950 SF
Rent Commencement	May 2025
Remaining Term	15 Years
Annual Rent	\$125,000
Annual Rent PSF	\$131.58 PSF
Rental Increases	Year 6: 10% Increase (\$137,500 - 5.22% Cap) Year 11: 10% Increase (\$151,500 - 5.75% Cap)
Option Periods and Increases	Four 5-Year Options Year 16: 10% Increase (\$166,375 - 6.32% Cap) Year 21: 10% Increase (\$183,013 - 6.95% Cap) Year 26: 10% Increase (\$201,314 - 7.65% Cap) Year 31: 10% Increase (\$221,415 - 8.41% Cap)



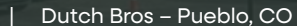
Offering Summary

Price	\$2,500,000
Cap Rate	5.00%
NOI	\$125,000
Taxes	Net
Insurance	Net
CAM	Net
Roof & Structure	Tenant Responsibility

Site Plan



8



Demographics

5 MILE RADIUS:



Total Population: **86,198**

Households: **36,025**

Daytime Population: **66,517**

Median Age: **39.0**



Average Household Income: **\$77,227**

Median Household Income: **\$58,102**

10 MILE RADIUS:



Total Population: **153,661**

Households: **62,386**

Daytime Population: **110,492**

Median Age: **39.2**



Average Household Income: **\$87,377**

Median Household Income: **\$67,055**

20 MILE RADIUS:



Total Population: **165,094**

Households: **66,805**

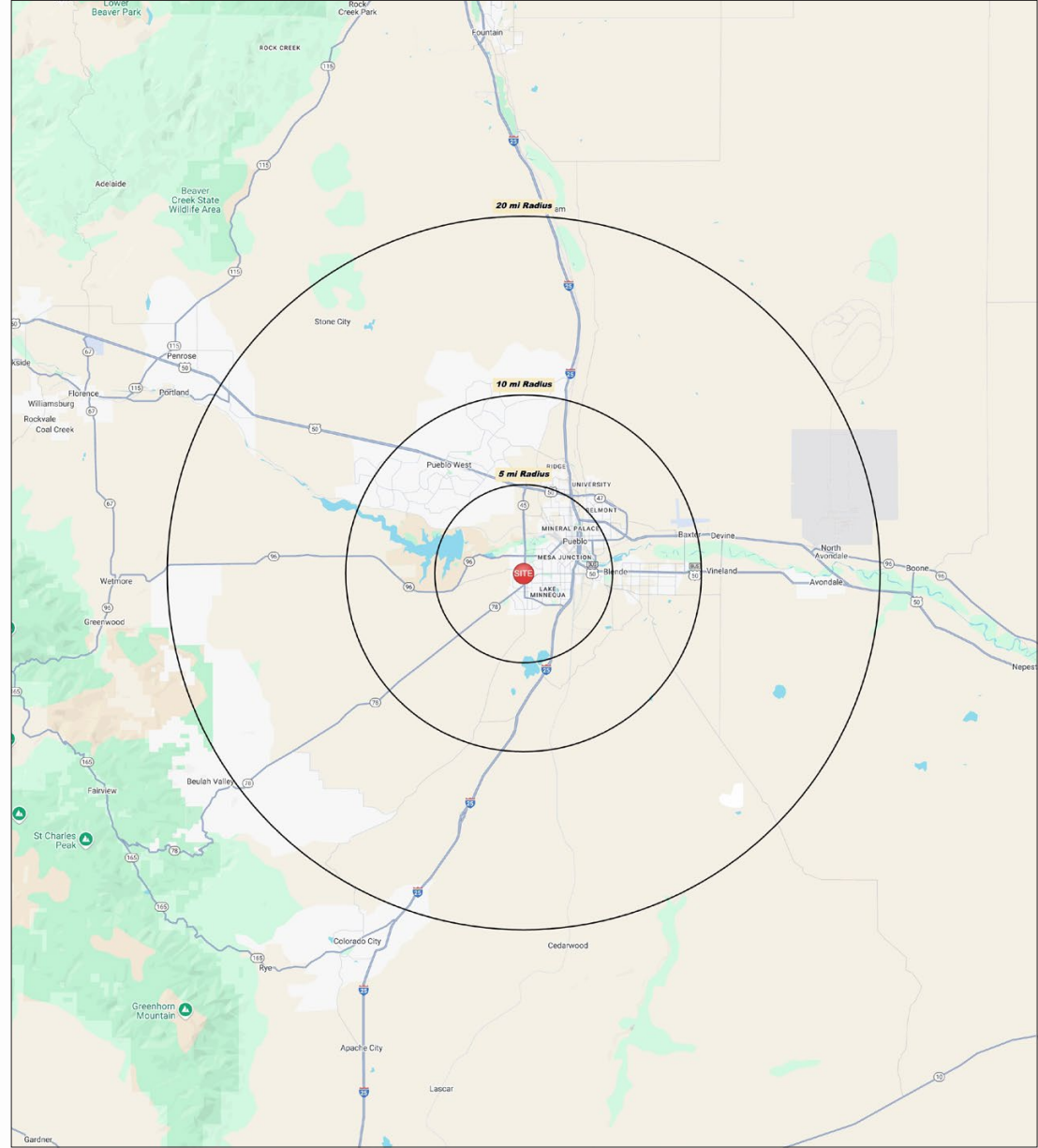
Daytime Population: **116,888**

Median Age: **39.5**

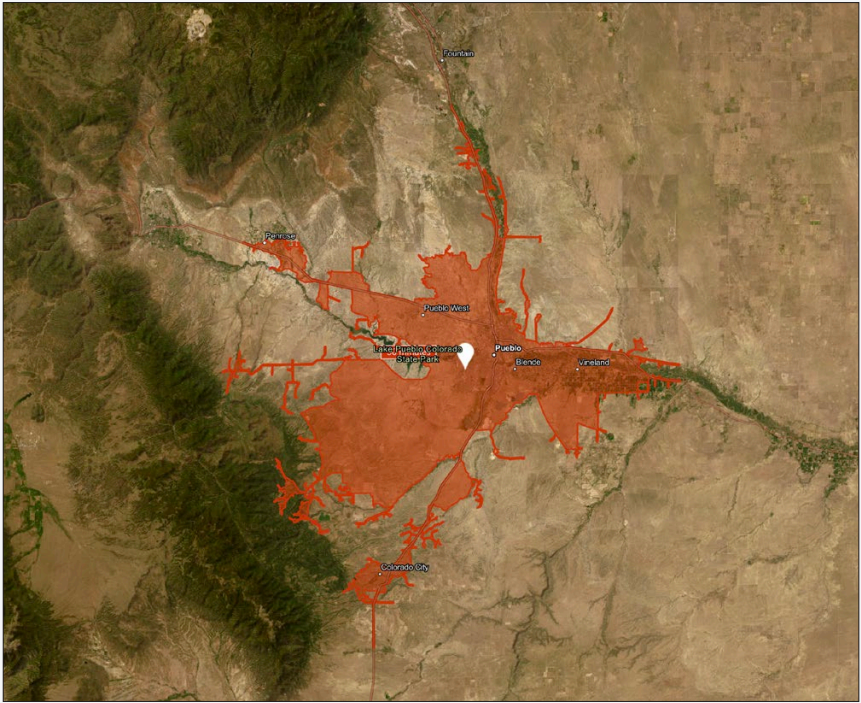


Average Household Income: **\$88,891**

Median Household Income: **\$68,585**



Demographics - 30 Minutes Drive



TOTAL RETAIL SALES

Includes F&B



\$1,302,361,464

EDUCATION

Bachelor's Degree
or Higher



27%

OWNER OCCUPIED HOME VALUE

Average



\$366,566

KEY FACTS

166,299

Population

\$60,980

Median Household Income

41.1

Median Age

163,524

Daytime Population

TAPESTRY SEGMENTS

Midlife Constants <i>7,814 Households</i>	Traditional Living <i>6,508 Households</i>	Hometown Heritage <i>6,491 Households</i>
Socioeconomic Traits Residents are seniors, at or approaching retirement, with below-average labor force participation and below average net worth.	Socioeconomic Traits Over 70% have completed high school or some college. Almost three-quarters of households derive income from wages and salaries, augmented by Supplemental Security Income and public assistance	Socioeconomic Traits Slightly smaller market; Work mainly in service, manufacturing, and retail trade industries. 60% of householders are renters.
Household Types Married couples, with a growing share of singles.	Household Types The households are a mix of married-couple families and singles. Many families encompass two generations.	Household Types Primarily family households, married couples with or without children, single parents, and multigenerational households.
Typical Housing Single Family	Typical Housing Single Family	Typical Housing Single Family

ANNUAL HOUSEHOLD SPENDING

\$2,839

Eating
Out

\$1,767

Apparel &
Services

\$5,250

Groceries

\$196

Computer &
Hardware

\$5,958

Health
Care



Pueblo Crossing

- SUPERCUTS
- ULTA
- BEST BUY
- BUFFALO WILD WINGS
- FIVE BELOW
- petco
- SportClips
- WINGS
- chili's
- Lendmark Financial Services
- maurices
- KOHL'S

Pueblo Mall

- BOOT BARN
- Dutch Bros
- AVIS
- Bath & Body Works
- Buckle
- Foot Locker
- hotlap
- Hot Topic
- JOANN
- LE NAILS
- rue21
- spencer's
- Budget Truck Rental
- carter's
- Dillard's
- GNC LIVE WELL
- jcpenney
- JD
- Lids
- Planet Fitness
- PRETZEL MAKER
- SEARS
- SHOE DEPT. ENCORE
- claire's

Midtown Shopping

- BLACKJACK PIZZA & SALADS
- UNITED STATES POSTAL SERVICE

Sunset Plaza

- Auto Zone
- GOODYEAR
- True Value HARDWARE
- WELLS FARGO
- albi
- arc
- FAMILY DOLLAR
- BOB'S BROS
- caliburn

Regency Square

- Caribbea
- GameStop
- Hipplebee's
- Terry's
- usbank
- HELLO
- BILLS
- Dollar Tree
- HARBOR FREIGHT
- SUNFLOWER BANK
- Southern Wine & Spirits
- TACO BELL

SUBJECT PROPERTY

Tenant Overview

DUTCH BROS



Dutch Bros is a rapidly expanding operator and franchisor of drive-thru shops specializing in high-quality, hand-crafted beverages. As of February 2025, Dutch Bros operates 1,000 locations across 18 states, solidifying its position as the third-largest coffee chain in the United States, following Starbucks and Dunkin'.

In 2024, Dutch Bros opened 151 new shops, bringing its total to 987 locations by year-end. The company plans to accelerate growth by opening at least 160 new shops in 2025, aiming to reach over 4,000 locations within the next 10 to 15 years.

Key Features as a Tenant

- ✓ **Publicly Traded & Trusted:** Dutch Bros Inc. is publicly traded on the New York Stock Exchange under the ticker BROS, providing transparency, investor confidence, and strong brand visibility nationwide.
- ✓ **Successful IPO Performance:** The company's 2021 IPO was one of the most successful in the food and beverage sector and the largest in the state of Oregon's history, raising over \$480 million and signaling strong investor demand and long-term growth potential.
- ✓ **Robust Revenue Growth:** Dutch Bros reported a 34.9% increase in fourth-quarter revenue in 2024, reaching \$342.8 million, with projected 2025 revenues between \$1.555 billion and \$1.575 billion.
- ✓ **Aggressive National Expansion:** With 1,000+ stores across 18 states and a goal of 4,000 locations over the next 10–15 years, Dutch Bros continues to scale rapidly while maintaining consistent unit-level performance and customer loyalty.



CORPORATE SNAPSHOT

Headquarters	Grants Pass, Oregon
Stock Ticker	NYSE: BROS
Total Locations	1,000+ (as of February 2025)
Employees	Approximately 25,000
Market Capitalization	~\$6.5 billion (as of early 2025)
States Operating In	18 U.S. States

Tenant Overview

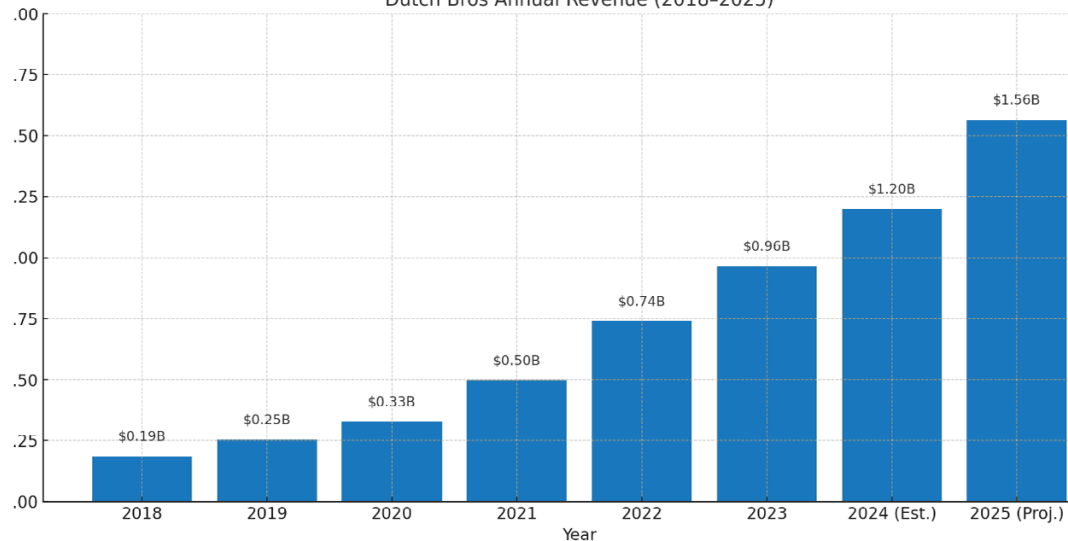
DUTCH BROS



Financially, Dutch Bros reported a 34.9% increase in fourth-quarter revenue, reaching \$342.8 million, with same-store sales growing by 6.9%. The company projects total revenues between \$1.555 billion and \$1.575 billion for 2025.

Dutch Bros continues to strengthen its brand identity through proprietary innovations, including its custom-designed “Dutch Bros lid,” which enhances the customer experience and reinforces brand recognition. The company also markets a growing line of proprietary coffee blends and branded merchandise, cultivating a loyal customer base and creating additional revenue streams beyond in-store beverage sales.

Dutch Bros Annual Revenue (2018–2025)



City Overview - Pueblo, CO

Pueblo is a home rule municipality and the county seat of Pueblo County, Colorado. With a population of 111,876 as of the latest Census, it ranks as the ninth most populous city in the state. As the principal city of the Pueblo Metropolitan Statistical Area and a key part of the Front Range Urban Corridor, Pueblo plays a vital role in Colorado's economic and geographic landscape.

Strategically located at the confluence of the Arkansas River and Fountain Creek, Pueblo lies approximately **112 miles south of Denver**. The region is classified as semi-arid desert, receiving roughly 12 inches of precipitation annually. Thanks to its location in Colorado's **"Banana Belt,"** Pueblo experiences milder winters and less snowfall than many other major cities in the state.

Known as the **"Steel City,"** Pueblo is one of the largest steel-producing cities in the United States. In 2015, Renewable Energy Systems Americas broke ground on the **Comanche Solar Project** just south of the city. Today, Pueblo is recognized as Colorado's premier location for solar energy development, outperforming regional competitors such as Boulder, CO and Taos, NM.



Key Features

- ✓ **Population:** Approximately **168,000** in the Pueblo MSA – capturing the broader regional market beyond city limits
- ✓ **Location:** **112 miles south of Denver**, strategically positioned along the Front Range Urban Corridor
- ✓ **Climate:** Semi-arid with just 12 inches of annual precipitation; located in Colorado's **mild-weather "Banana Belt"**
- ✓ **Economy:** A historic leader in **U.S. steel production** and an emerging hub for **renewable energy innovation**
- ✓ **Solar Energy Leadership:** Home to the Comanche Solar Project and ranked among the **top solar development zones in the state**

Brand New Development – Absolute NNN 15-Year Corporate Lease – Single-Tenant Drive-Thru

1303 S Pueblo Blvd, Pueblo, CO, 81005



Investment Contact:

Spencer O'Donnell

Managing Director
Charter Realty
Broker License No. 01954051
(714) 400-6267 | spencer@charterrealty.com

Cooperating Broker:

Vince Viverito

Managing Director
SLIB
Broker License No. IR. 100086247
(847) 338-0661 | VinceV@slibinc.com



This Offering Memorandum contains select information pertaining to the business and affairs of the subject property for sale. It has been prepared by Charter Realty. This Offering Memorandum may not be all-inclusive or contain all of the information a prospective purchaser may desire. The information contained in this Offering Memorandum is confidential and furnished solely for the purpose of a review by a prospective purchaser of the Property. It is not to be used for any other purpose or made available to any other person without the written consent of Seller or Charter Realty. The material is based in part upon information supplied by the Seller and in part upon financial information obtained from sources it deems reliable. Owner, nor their officers, employees, or agents makes any representation or warranty, express or implied, as to the accuracy or completeness of this Offering Memorandum or any of its contents and no legal liability is assumed or shall be implied with respect thereto.

Prospective purchasers should make their own projections and form their own conclusions without reliance upon the material contained herein and conduct their own due diligence.

By acknowledging your receipt of this Offering Memorandum from Charter Realty, you agree:

1. The Offering Memorandum and its contents are confidential; 2. You will hold it and treat it in the strictest of confidence; and 3. You will not, directly or indirectly, disclose or permit anyone else to disclose this Offering Memorandum or its contents in any fashion or manner detrimental to the interest of the Seller.

Owner and Charter Realty expressly reserve the right, at their sole discretion, to reject any and all expressions of interest or offers to purchase the Property and to terminate discussions with any person or entity reviewing this Offering Memorandum or making an offer to purchase the Property unless and until a written agreement for the purchase and sale of the Property has been fully executed and delivered.

If you wish not to pursue negotiations leading to the acquisition of the property or in the future you discontinue such negotiations, then you agree to purge all materials relating to this Property including this Offering Memorandum.

A prospective purchaser's sole and exclusive rights with respect to this prospective transaction, the Property, or information provided herein or in connection with the sale of the Property shall be limited to those expressly provided in an executed Purchase Agreement and shall be subject to the terms thereof. In no event shall a prospective purchaser have any other claims against Seller or Charter Realty or any of their affiliates or any of their respective officers, Directors, shareholders, owners, employees, or agents for any damages, liability, or causes of action relating to this solicitation process or the marketing or sale of the Property.

This Offering Memorandum shall not be deemed to represent the state of affairs of the Property or constitute an indication that there has been no change in the state of affairs of the Property since the date of this Offering Memorandum.

Charter Realty makes no guarantees, representations or warranties of any kind, expressed or implied, regarding the information including, but not limited to, warranties or content, accuracy and reliability. This publication is the copyrighted

