

FERGUSON FARM PAD SITES

770 & 795 BOARDWALK AVENUE | BOZEMAN, MT 59718

AVAILABLE 0.97 ACRES & 0.99 ACRES

ANCHORED BY



THE MARKET

PROPERTY INFORMATION

- East - 770 Boardwalk
(.99 Acre Site)- 8,384 SF Max
Footprint. Up to 2 Stories
- West - 795 Boardwalk
(.97 Acre Site)- 8,066 SF Max
Footprint. Up to 3 Stories
- \$1,600,000 each
- Traffic count: 25,272 VPD

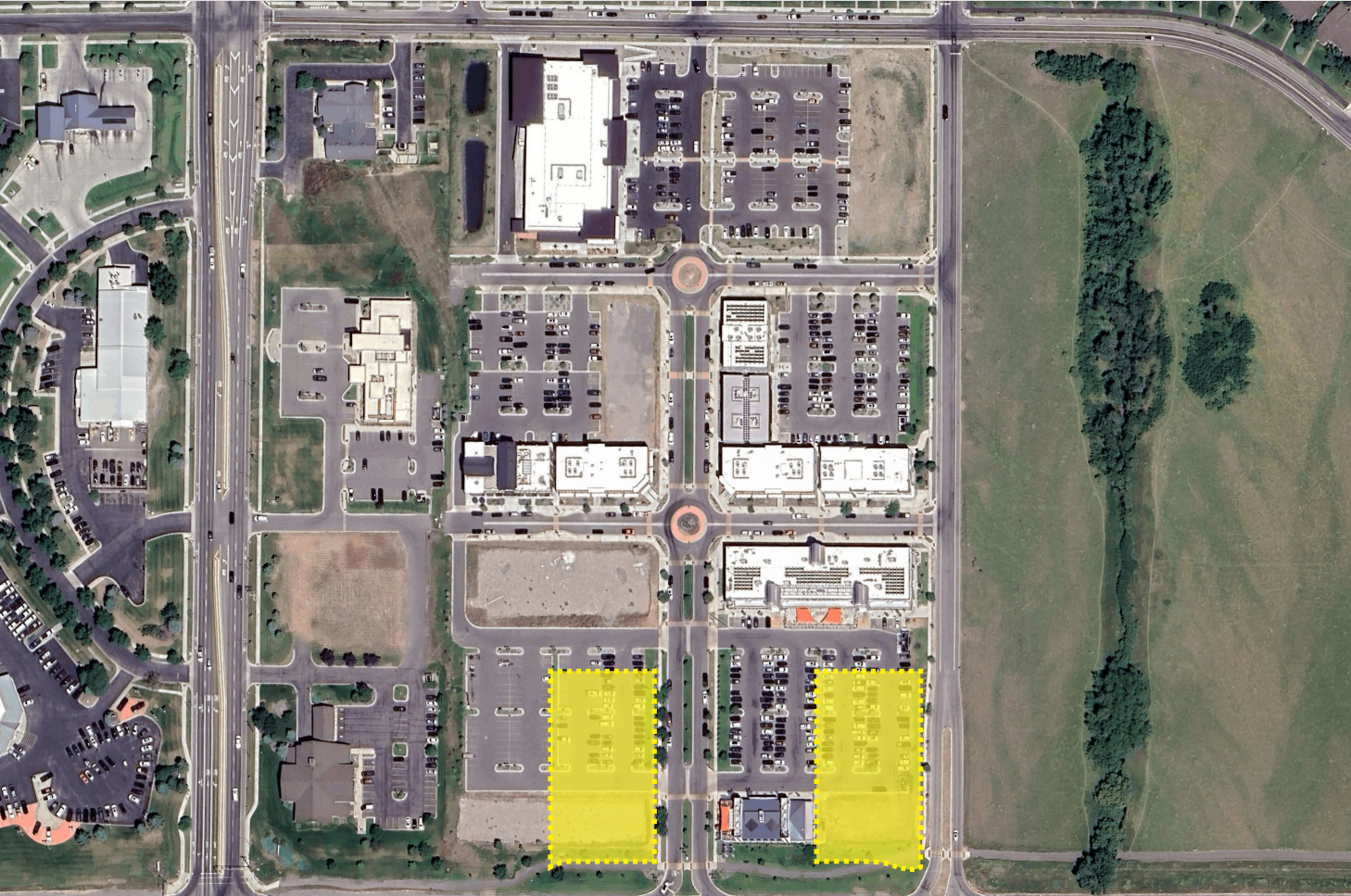
AREA DEMOGRAPHICS

2025 DEMOGRAPHICS	1 MILE	3 MILE	5 MILE
POPULATION	6,916	47,159	73,072
MEDIAN HH INC	\$90,207	\$83,773	\$92,723
AVERAGE HH INC	\$114,012	\$115,894	\$130,072



www.CharterRealty.com

DELANEY & COMPANY



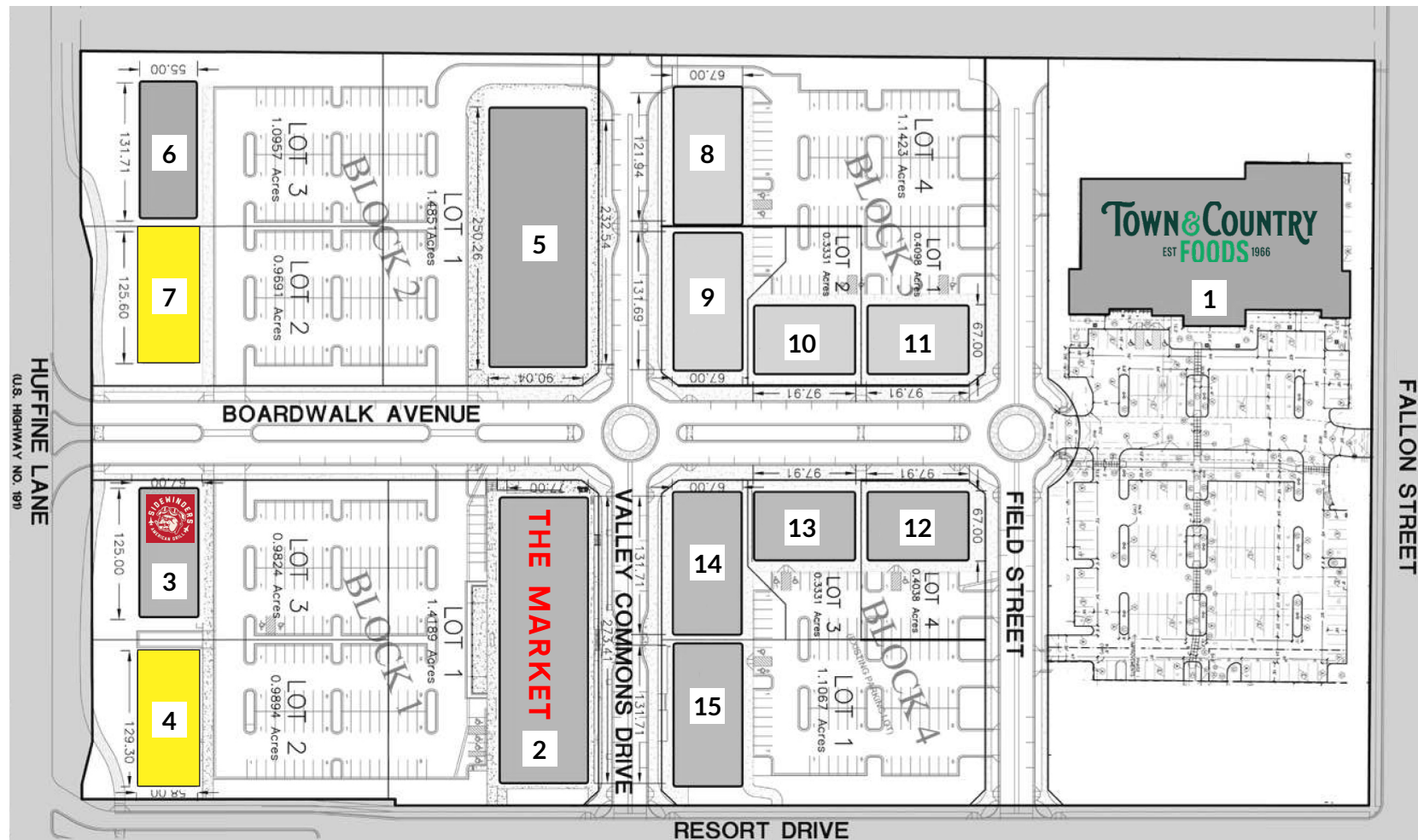
FOR MORE INFORMATION CONTACT:

ANDREW INCHES | 406.581.6595 | Andrew@CharterRealty.com
CRAIG MUELLER | 561.371.8437 | CraigM@CharterRealty.com
MIKE DELANEY | 406.586.3132 | Delaney@DelaneynCo.com

770 & 795 BOARDWALK AVENUE | BOZEMAN, MT 59718

TENANTS / AVAILABILITY

#	TENANT
1	Town & Country Foods
2	THE MARKET - Merry Piglets - Catch - Garden Barn/Cat Cafe - Salchicha - Hatchi - Tanglewood - Liberty Burger
3	Sidewinders
4	Available
5	Major Businesses Coming Soon
6	Future Retail/Office
7	Available
8	SBDJ BUILDING - The Well Juicery - Bayliss Architects - CrossCountry Mortgage - Back 9 Golf
9	Langlas & Associates
10	Future Retail/Office
11	Future Retail/Office
12	CCARA BUILDING - Charles Schwab - Carey Leep - Cottonwood Creek Dental
13	PALISADE BUILDING - Lone Peak Physical Therapy - New Wave Float Therapy
14	BOARDWALK BUILDING - Single Barrel Liquor & Bar - Bozeman Oral Surgery - Bozeman Primary Care - HUB - Crosscurrent Real Estate - Edward Jones - Evolve Hair Salon
15	FORTUNA BUILDING - Advance Performance and Rehabilitation Services - Chi Nail Bar - Bozeman Family Dentistry - Bechtle Architects - Big Sky Dermatology



CHARTER REALTY

Information contained in this document has been reviewed and approved by Charter Realty; however, errors sometimes occur. Charter disclaims any warranty of any kind, expressed or implied, as to any matter whatsoever relating to this service. In no event shall Charter be liable for any indirect, special, incidental or consequential damages arising out of any use of or reliance on any content or materials contained herein.

DELANEY & COMPANY

FERGUSON FARM PAD SITES

770 & 795 BOARDWALK AVENUE | BOZEMAN, MT 59718

TRADE AREA DEMOGRAPHICS

1 MILE RADIUS:



Total Population: **6,916**

Households: **3,069**

Daytime Population: **2,487**

Median Age: **30.4**



Average Household Income: **\$114,012**

Median Household Income: **\$90,207**

3 MILE RADIUS:



Total Population: **47,159**

Households: **19,332**

Daytime Population: **24,479**

Median Age: **28.2**



Average Household Income: **\$115,894**

Median Household Income: **\$83,773**

5 MILE RADIUS:



Total Population: **73,072**

Households: **30,649**

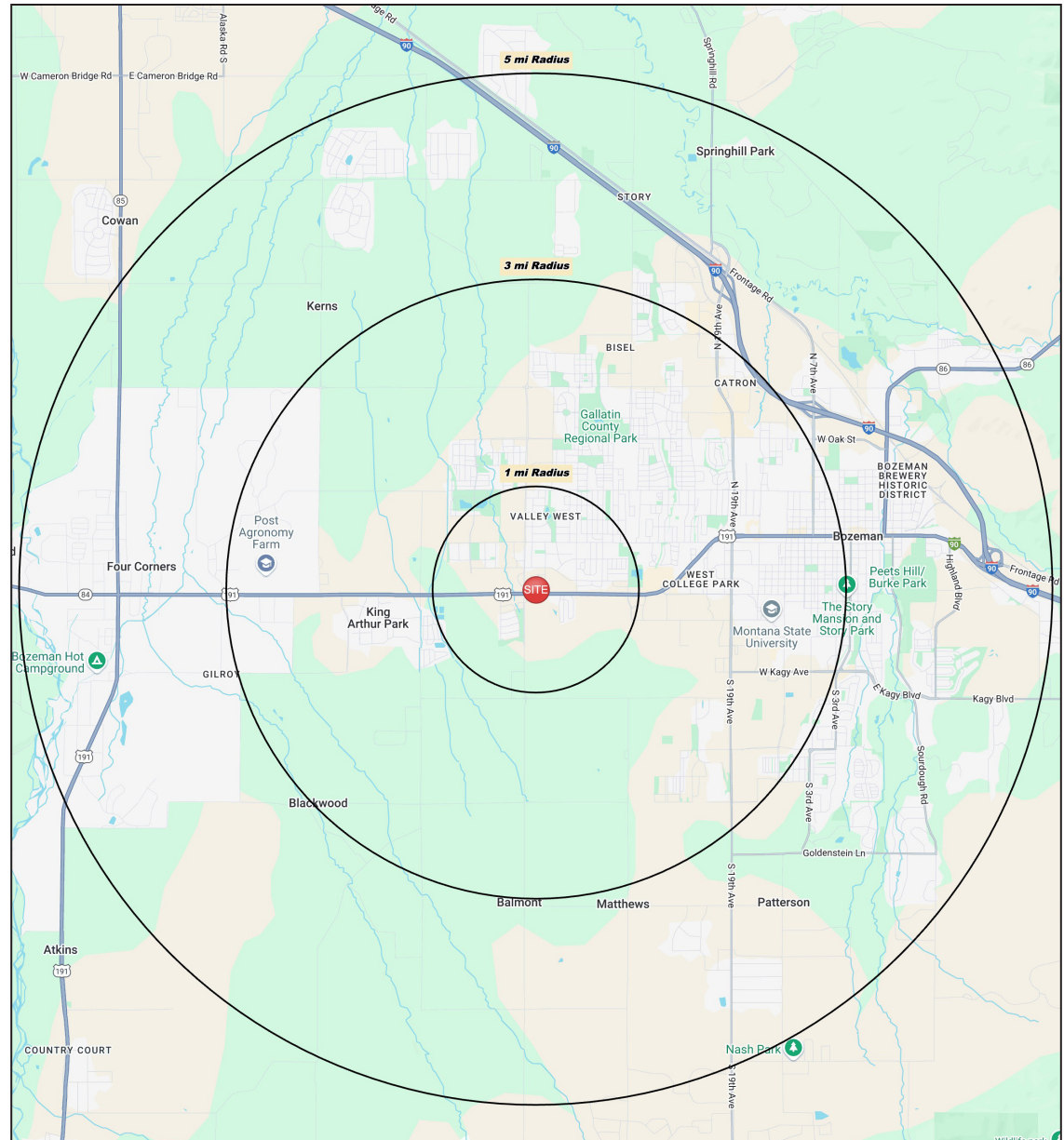
Daytime Population: **51,973**

Median Age: **31.8**



Average Household Income: **\$130,072**

Median Household Income: **\$92,723**



CHARTER REALTY

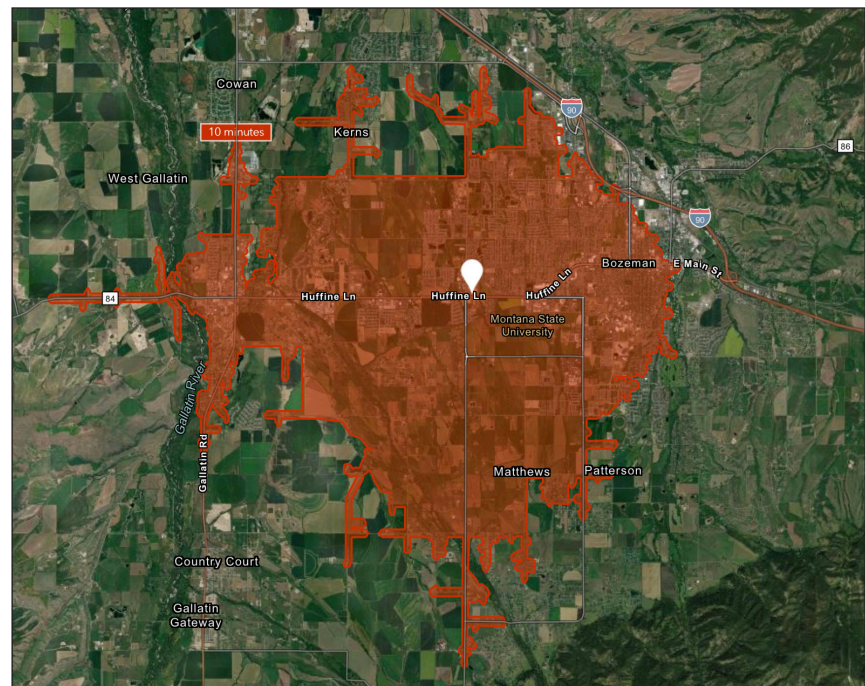
Information contained in this document has been reviewed and approved by Charter Realty; however, errors sometimes occur. Charter disclaims any warranty of any kind, expressed or implied, as to any matter whatsoever relating to this service. In no event shall Charter be liable for any indirect, special, incidental or consequential damages arising out of any use of or reliance on any content or materials contained herein.

DELANEY & COMPANY

FERGUSON FARM PAD SITES

770 & 795 BOARDWALK AVENUE | BOZEMAN, MT 59718

10 MINUTE DRIVE TIME



TOTAL RETAIL SALES

Includes F&B



\$607,124,869

EDUCATION

Bachelor's Degree
or Higher



61%

OWNER OCCUPIED HOME VALUE

Average



\$713,270

KEY FACTS

60,511

Population

\$79,939

Median Household Income

29.1

Median Age

60,986

Daytime Population

TAPESTRY SEGMENTS

College Towns 9,180 Households	Bright Young Professionals 4,939 Households	Emerald City 3,319 Households
Socioeconomic Traits About half the residents are enrolled in college, while the rest work for a college or the services that support it.	Socioeconomic Traits Residents young, educated, working professionals. Labor force participation rate of 72% is higher than the US rate, generally white-collar work.	Socioeconomic Traits Young and mobile, they are more likely to rent. Half have a college degree and a professional occupation. Incomes close to the US median.
Household Types These are nonfamily households with many students living alone or with roommates for the first time.	Household Types Household type is primarily couples, married (or unmarried), with above-average concentrations of both single-parent & single-person households.	Household Types Single-person and nonfamily types make up over half of all households.
Typical Housing Multi-unit Rentals; Single Family	Typical Housing Single Family; Multi-units	Typical Housing Single Family; Multi-units

ANNUAL HOUSEHOLD SPENDING

\$4,140

Eating
Out

\$2,370

Apparel &
Services

\$7,159

Groceries

\$287

Computer &
Hardware

\$6,774

Health
Care



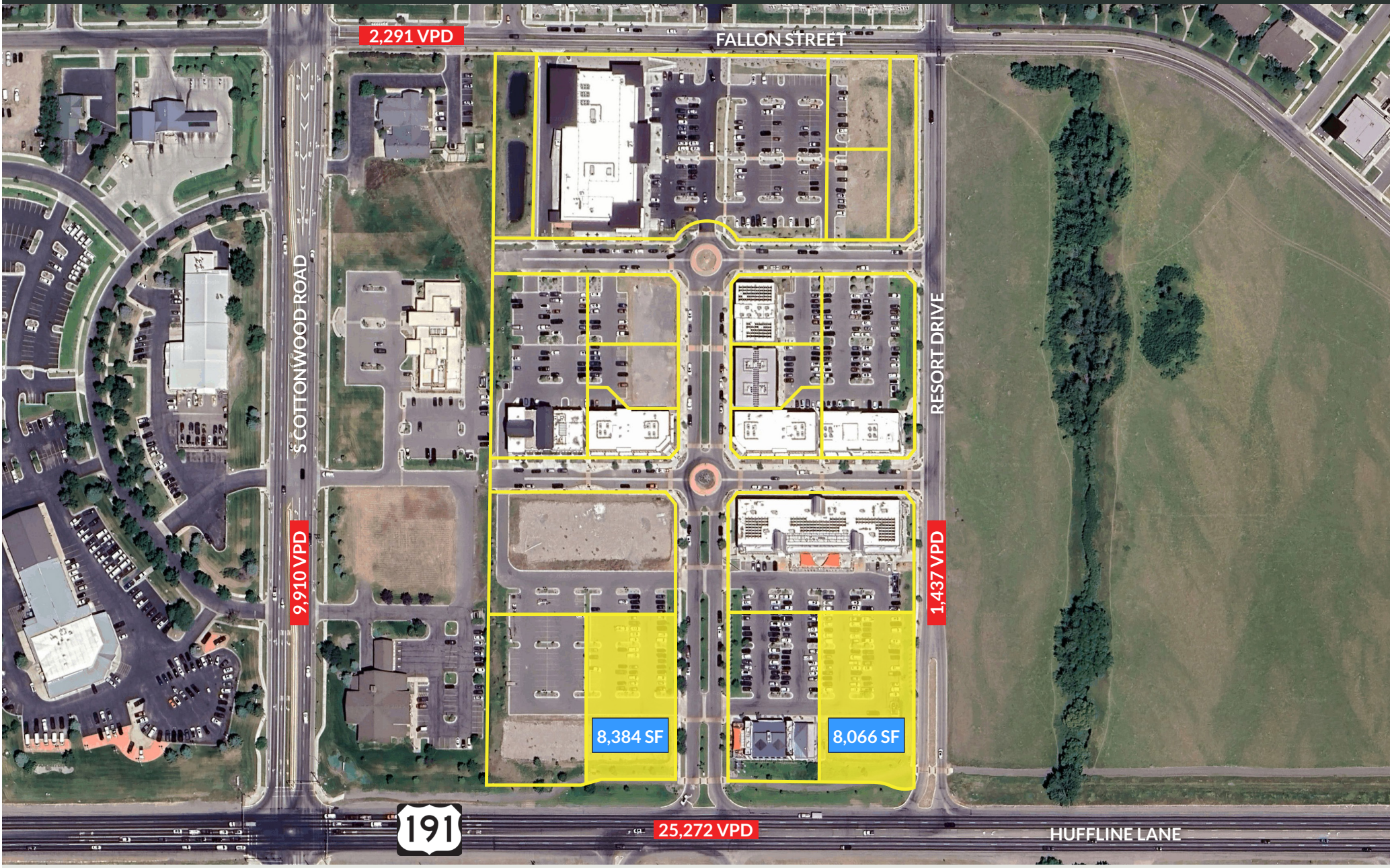
CHARTER REALTY

Information contained in this document has been reviewed and approved by Charter Realty; however, errors sometimes occur. Charter disclaims any warranty of any kind, expressed or implied, as to any matter whatsoever relating to this service. In no event shall Charter be liable for any indirect, special, incidental or consequential damages arising out of any use of or reliance on any content or materials contained herein.

DELANEY & COMPANY

FERGUSON FARM PAD SITES

770 & 795 BOARDWALK AVENUE | BOZEMAN, MT 59718



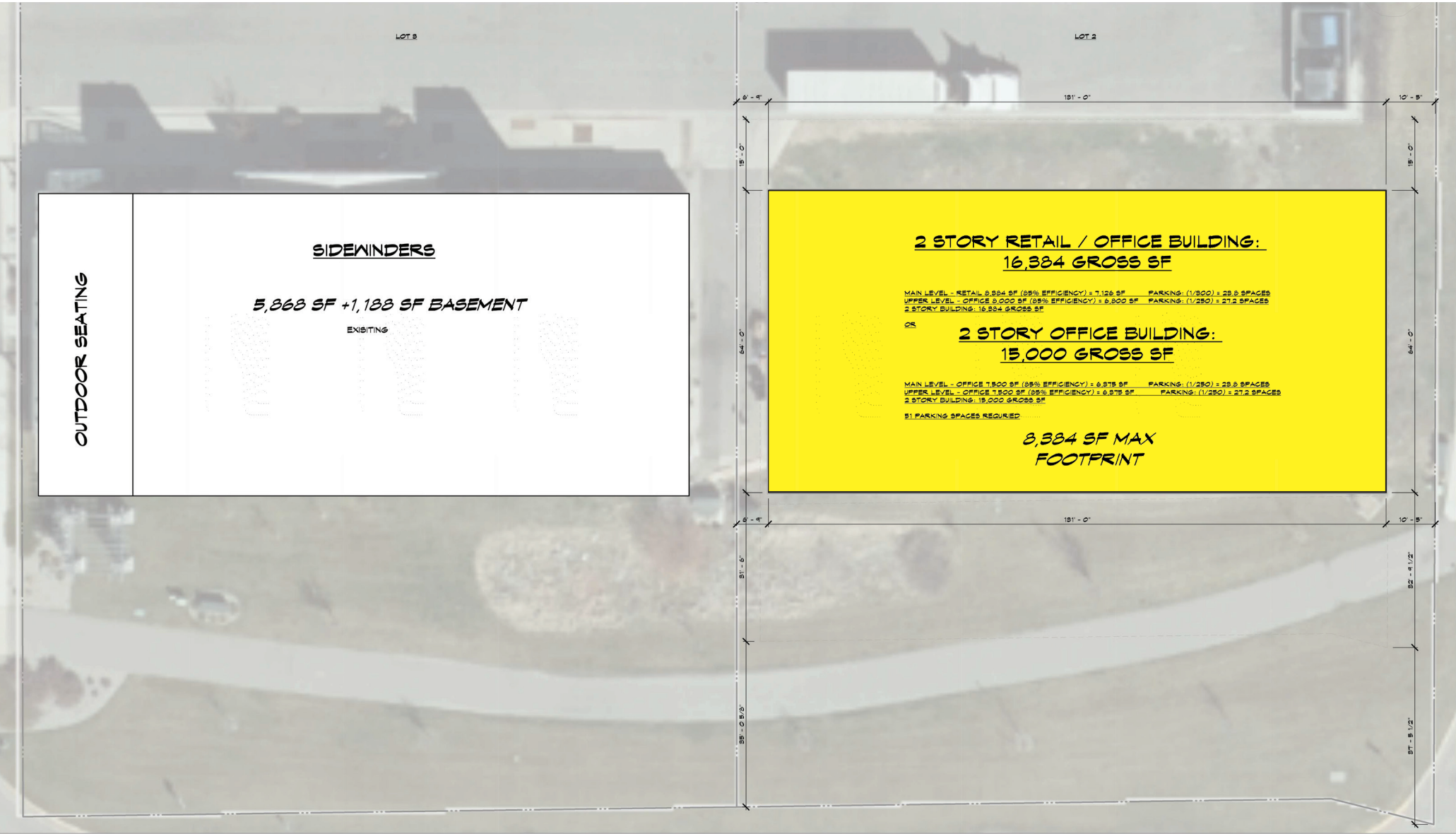
CHARTER REALTY
Information contained in this document has been reviewed and approved by Charter Realty; however, errors sometimes occur. Charter disclaims any warranty of any kind, expressed or implied, as to any matter whatsoever relating to this service. In no event shall Charter be liable for any indirect, special, incidental or consequential damages arising out of any use of or reliance on any content or materials contained herein.

DELANEY & COMPANY

FERGUSON FARM PAD SITES

770 & 795 BOARDWALK AVENUE | BOZEMAN, MT 59718

770 BOARDWALK AVE



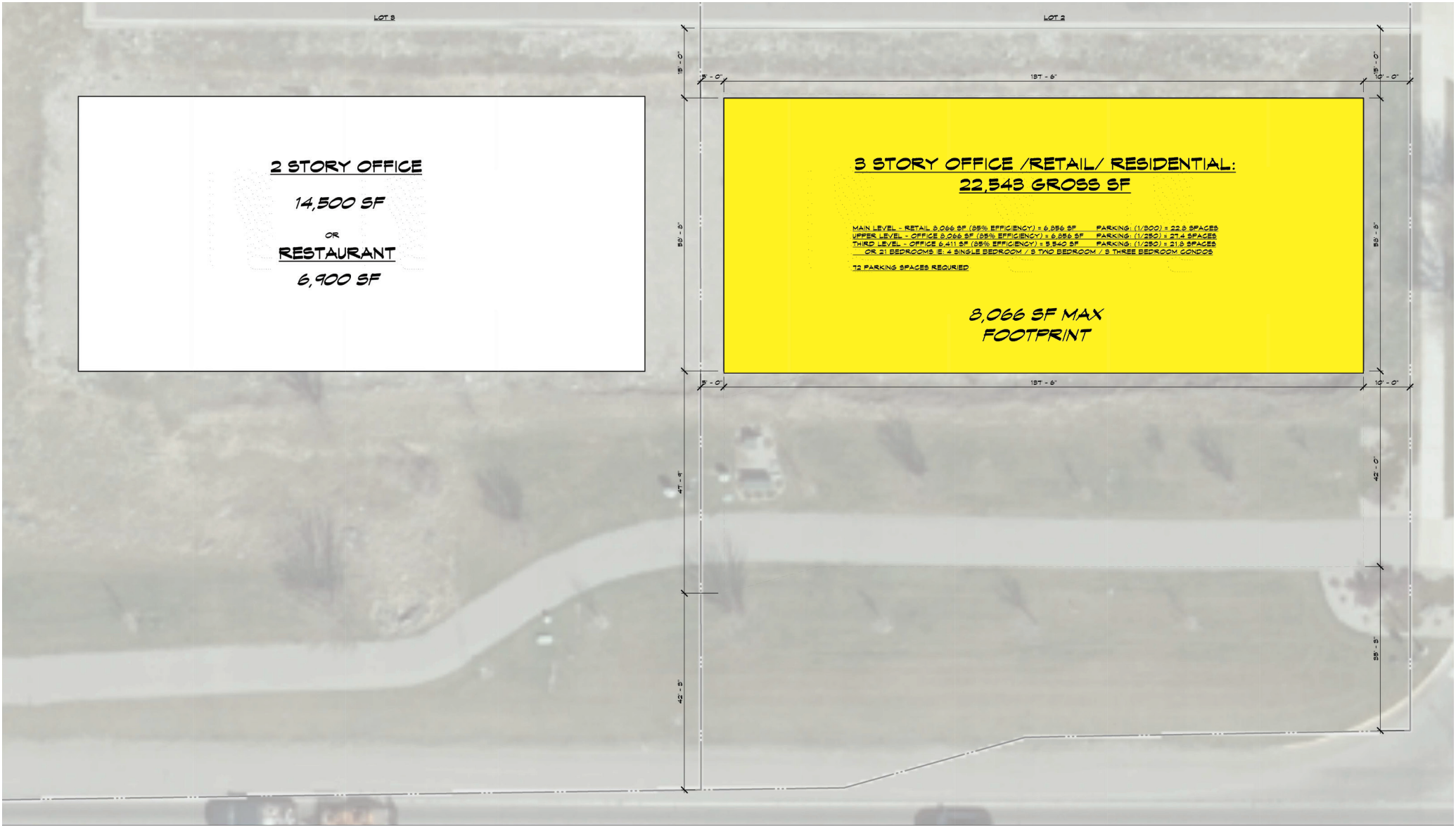
CHARTER REALTY
Information contained in this document has been reviewed and approved by Charter Realty; however, errors sometimes occur. Charter disclaims any warranty of any kind, expressed or implied, as to any matter whatsoever relating to this service. In no event shall Charter be liable for any indirect, special, incidental or consequential damages arising out of any use of or reliance on any content or materials contained herein.

DELANEY & COMPANY

FERGUSON FARM PAD SITES

770 & 795 BOARDWALK AVENUE | BOZEMAN, MT 59718

795 BOARDWALK AVE

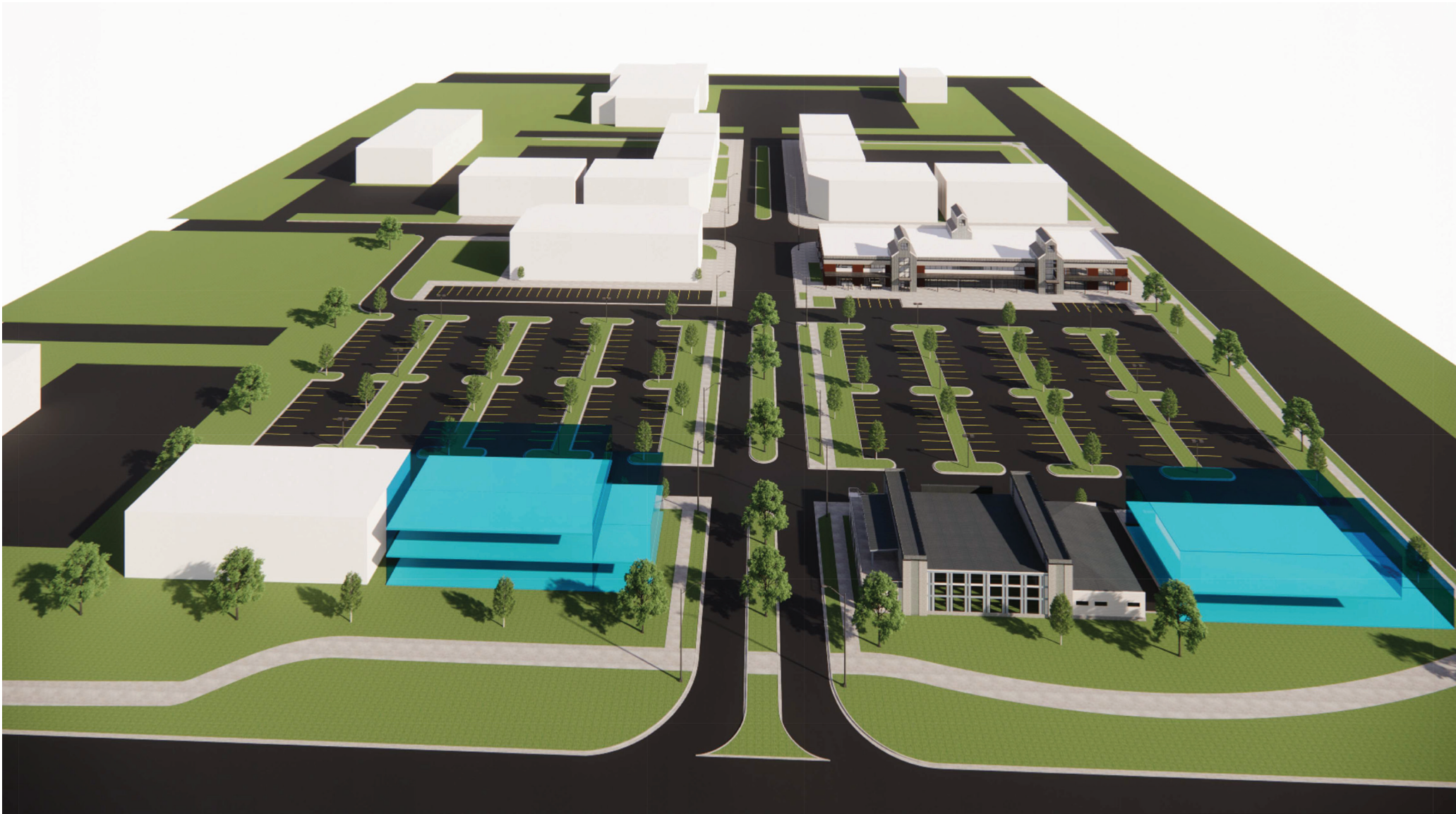


CHARTER REALTY
Information contained in this document has been reviewed and approved by Charter Realty; however, errors sometimes occur. Charter disclaims any warranty of any kind, expressed or implied, as to any matter whatsoever relating to this service. In no event shall Charter be liable for any indirect, special, incidental or consequential damages arising out of any use of or reliance on any content or materials contained herein.

DELANEY & COMPANY

FERGUSON FARM PAD SITES

770 & 795 BOARDWALK AVENUE | BOZEMAN, MT 59718

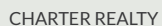


CHARTER REALTY

Information contained in this document has been reviewed and approved by Charter Realty; however, errors sometimes occur. Charter disclaims any warranty of any kind, expressed or implied, as to any matter whatsoever relating to this service. In no event shall Charter be liable for any indirect, special, incidental or consequential damages arising out of any use of or reliance on any content or materials contained herein.

DELANEY & COMPANY

770 & 795 BOARDWALK AVENUE | BOZEMAN, MT 59718

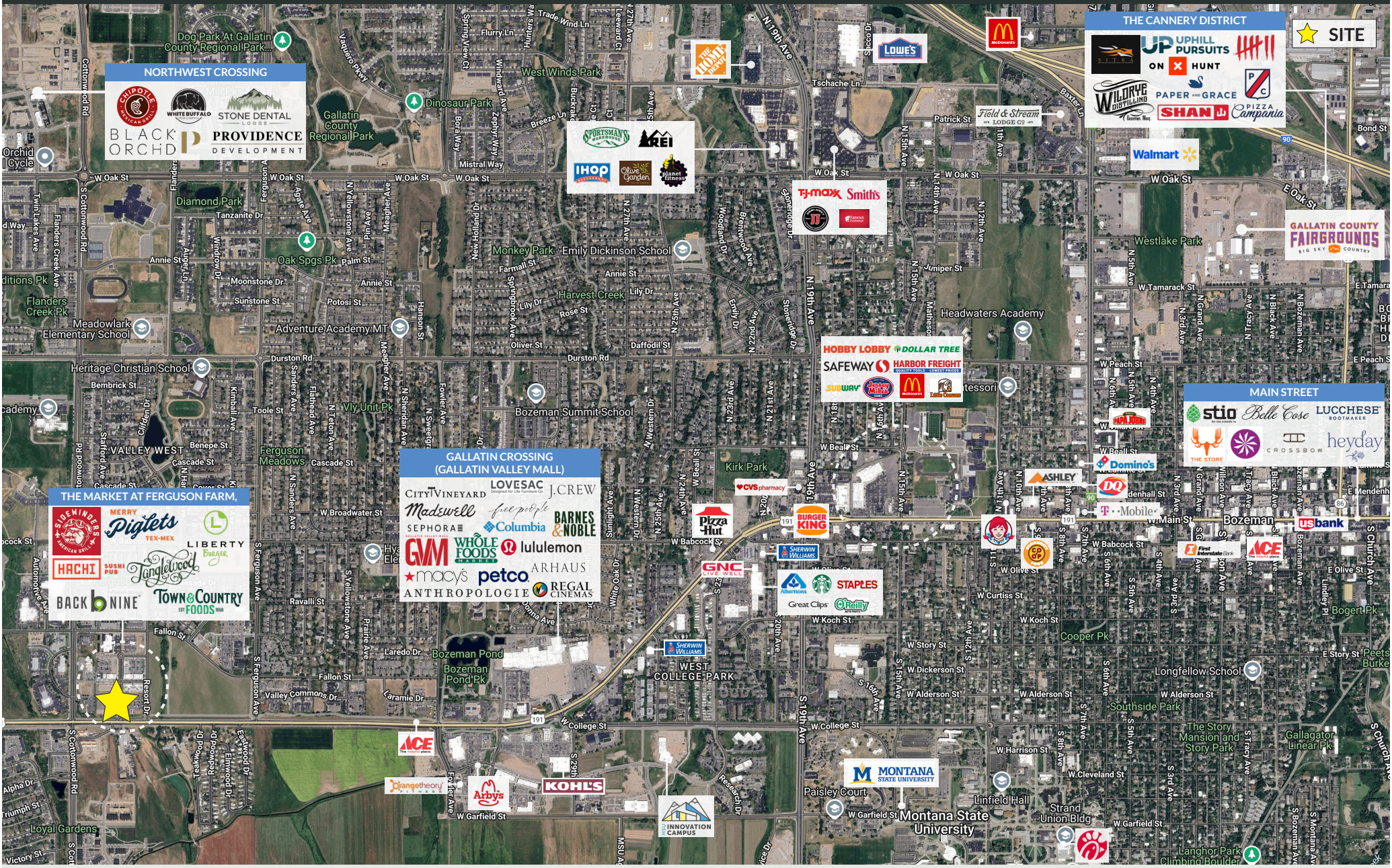


Information contained in this document has been reviewed and approved by Charter Realty; however, errors sometimes occur. Charter disclaims any warranty of any kind, expressed or implied, as to any matter whatsoever relating to this service. In no event shall Charter be liable for any indirect, special, incidental or consequential damages arising out of any use of or reliance on any content or materials contained herein.

DELANEY & COMPANY

FERGUSON FARM PAD SITES

770 & 795 BOARDWALK AVENUE | BOZEMAN, MT 59718



CHARTER REALTY
Information contained in this document has been reviewed and approved by Charter Realty; however, errors sometimes occur. Charter disclaims any warranty of any kind, expressed or implied, as to any matter whatsoever relating to this service. In no event shall Charter be liable for any indirect, special, incidental or consequential damages arising out of any use of or reliance on any content or materials contained herein.

DELANEY & COMPANY

FERGUSON FARM PAD SITES

770 & 795 BOARDWALK AVENUE | BOZEMAN, MT 59718



CHARTER REALTY

Information contained in this document has been reviewed and approved by Charter Realty; however, errors sometimes occur. Charter disclaims any warranty of any kind, expressed or implied, as to any matter whatsoever relating to this service. In no event shall Charter be liable for any indirect, special, incidental or consequential damages arising out of any use of or reliance on any content or materials contained herein.

DELANEY & COMPANY