

COWESETT CORNERS

300 QUAKER LANE | WARWICK, RI 02886

AVAILABLE 976 SF - 4,882 SF

ANCHORED BY

petco

STOP & SHOP

five BELOW

MATTRESS FIRM

PROPERTY INFORMATION

- High-volume Stop & Shop anchored shopping center
- In excess of 50,000 cars per day combined along Route 2 and Cowesett Road
- Available pad with opportunity for a drive-thru lane
- Endcap second-generation restaurant space available
- 967 Parking Spots

SPACE DETAILS

- Available 976 sf - 4,882 sf.

AREA DEMOGRAPHICS

2025 DEMOGRAPHICS	1 MILE	3 MILE	5 MILE
POPULATION	7,590	64,592	129,446
MEDIAN HH INC	\$72,503	\$95,199	\$99,758
AVERAGE HH INC	\$101,390	\$117,642	\$125,967



www.CharterRealty.com

FOR MORE INFORMATION CONTACT:

BRYAN FURZE

617.947.0428

Bryan@CharterRealty.com

COWESETT CORNERS

300 QUAKER LANE | WARWICK, RI 02886



#	Tenant	Sq. Ft.
D	Super Stop & Shop	61,567
1a	Five Guys Burgers & Fries	2,627
1b	Available	1,893
B-2	Five Below	7,902
B-3	Petco	13,756
C-2/3/4	Oak Street Health	8,333
C-5/6	U.S. Armed Forces Career Center	5,517

C-7	Blue Cross Blue Shield	2,828
C-8	Sally Beauty	1,746
C-9	Available	1,701
C-10	Available	1,539
C-11	Tropical Smoothie Cafe	1,620
C-12	Stop & Shop	61,567
C-15	Miracle Ear	1,334
C-16	Available	2,000

C-17	Game Stop	2,000
C-18	Hi Nails	1,595
C-19	The Honeybaked Ham Co.	2,475
G-1	Applebee's	5,599
E-21	Mattress Firm	6,849
F-1	Citizens Bank	4,000
E-23/24	New Asia House	4,355
E-25	Available	946

E-26	Available	976
E-27	Available	990
E-28	Available	990
E-29	Available	980
E-30	Super Stop & Shop Fuel	4,165



CHARTER REALTY

Information contained in this document has been reviewed and approved by Charter Realty; however, errors sometimes occur. Charter disclaims any warranty of any kind, expressed or implied, as to any matter whatsoever relating to this service. In no event shall Charter be liable for any indirect, special, incidental or consequential damages arising out of any use of or reliance on any content or materials contained herein.

300 QUAKER LANE | WARWICK, RI 02886

TRADE AREA DEMOGRAPHICS

1 MILE RADIUS:



Total Population: 7,590

Households: 3,697

Daytime Population: 7,263

Median Age: 43.2



Average Household Income: **\$101,390**

Median Household Income: \$72,503

3 MILE RADIUS:



Total Population: 64,592

Households: 28,797

Daytime Population: 52,047

Median Age: 41.6



Average Household Income: \$117,642

Median Household Income: \$95,199

5 MILE RADIUS:



Total Population: 129,446

Households: 54,888

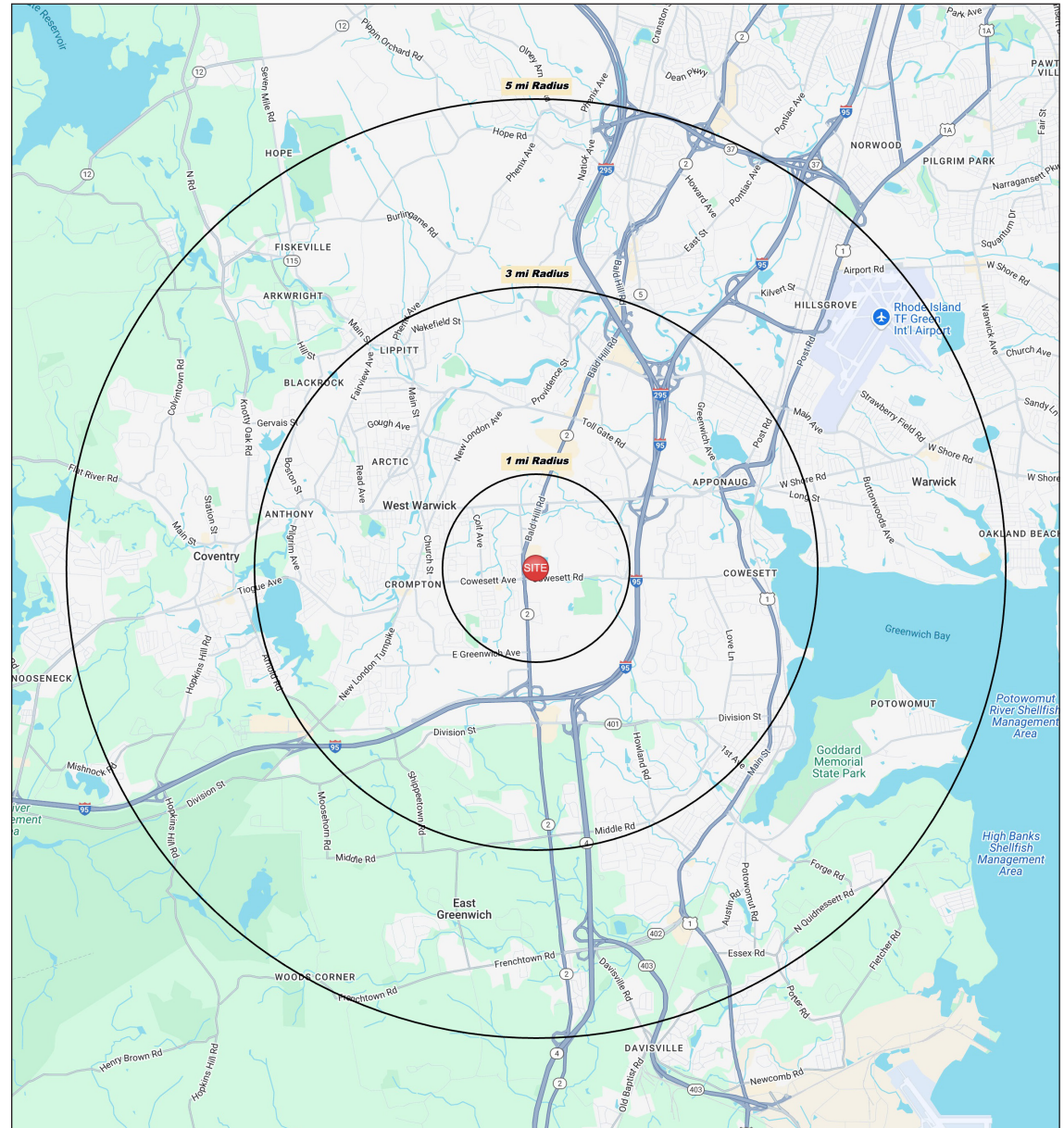
Daytime Population: **110,782**

Median Age: 42.8



Average Household Income: **\$125,967**

Median Household Income: \$99,758

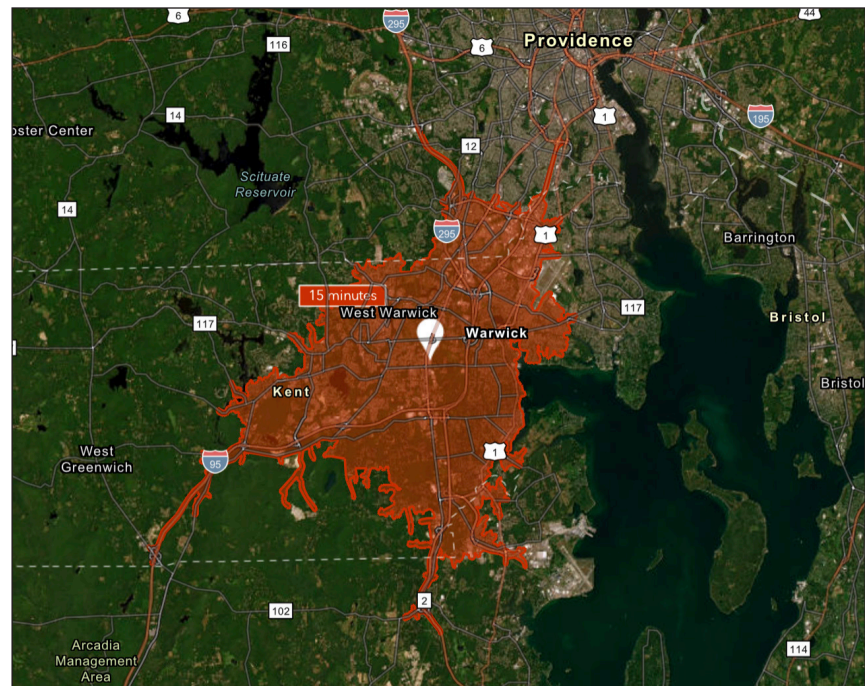


CHARTER REALTY

Information contained in this document has been reviewed and approved by Charter Realty; however, errors sometimes occur. Charter disclaims any warranty of any kind, expressed or implied, as to any matter whatsoever relating to this service. In no event shall Charter be liable for any indirect, special, incidental or consequential damages arising out of any use of or reliance on any content or materials contained herein.

COWESETT CORNERS

300 QUAKER LANE | WARWICK, RI 02886



KEY FACTS

113,663

Population

44.0

Median Age

\$85,192

Median Household Income

129,604

Daytime Population

TAPESTRY SEGMENTS

Parks & Rec

17,371 Households

Retirement Communities

3,779 Households

Front Porches

3,114 Households

Socioeconomic Traits

More than half of the population is college educated. This is a financially shrewd market with a diverse workforce.

Socioeconomic Traits

A combination of single-family homes and independent living with apartments, assisted living, and continuous care nursing facilities. Frugal, they pay close attention to finances.

Socioeconomic Traits

Composed of a blue-collar workforce with a strong labor force participation rate.

Household Types

Married couples, approaching retirement age.

Household Types

Small household size; many residents have outlived their partners and live alone.

Household Types

Young families w/ children, single parent families, singles living alone.

Typical Housing

Single Family

Typical Housing

Multiunits; Single Family

Typical Housing

Single Family; Multi-units

ANNUAL HOUSEHOLD SPENDING

\$3,744

Eating Out

\$2,441

Apparel & Services

\$6,975

Groceries

\$282

Computer & Hardware

\$8,010

Health Care

TOTAL RETAIL SALES

Includes F&B



\$1,290,402,281

EDUCATION

Bachelor's Degree or Higher



37%

OWNER OCCUPIED HOME VALUE

Average



\$479,028



CHARTER REALTY

Information contained in this document has been reviewed and approved by Charter Realty; however, errors sometimes occur. Charter disclaims any warranty of any kind, expressed or implied, as to any matter whatsoever relating to this service. In no event shall Charter be liable for any indirect, special, incidental or consequential damages arising out of any use of or reliance on any content or materials contained herein.

COWESETT CORNERS

300 QUAKER LANE | WARWICK, RI 02886



CHARTER REALTY

Information contained in this document has been reviewed and approved by Charter Realty; however, errors sometimes occur. Charter disclaims any warranty of any kind, expressed or implied, as to any matter whatsoever relating to this service. In no event shall Charter be liable for any indirect, special, incidental or consequential damages arising out of any use of or reliance on any content or materials contained herein.

COWESETT CORNERS

300 QUAKER LANE | WARWICK, RI 02886



CHARTER REALTY
Information contained in this document has been reviewed and approved by Charter Realty; however, errors sometimes occur. Charter disclaims any warranty of any kind, expressed or implied, as to any matter whatsoever relating to this service. In no event shall Charter be liable for any indirect, special, incidental or consequential damages arising out of any use of or reliance on any content or materials contained herein.

COWESETT CORNERS

300 QUAKER LANE | WARWICK, RI 02886



CHARTER REALTY

Information contained in this document has been reviewed and approved by Charter Realty; however, errors sometimes occur. Charter disclaims any warranty of any kind, expressed or implied, as to any matter whatsoever relating to this service. In no event shall Charter be liable for any indirect, special, incidental or consequential damages arising out of any use of or reliance on any content or materials contained herein.