

THE BRADFORD

485 COMMON STREET | BELMONT, MA 02478

AVAILABLE 450 SF - 19,469 SF

AREA TENANTS



STAPLES

CVS

Tatte
BAKERY & CAFE



PROPERTY INFORMATION

- 184,000 SF, three-building, all-inclusive live-work-play community
- 115 luxury residential units
- 34,121 sf total retail available with minimum of 450 sf and a maximum contiguous of 19,469 sf
- Each retail space has the potential for outdoor patio seating
- Parking available on site (dedicated garage) and on street
- Ample bike parking

AVAILABLE SPACE

- Available 450 sf - 19,469 sf

AREA DEMOGRAPHICS

2024 DEMOGRAPHICS	1 MILE	3 MILE	5 MILE
POPULATION	30,733	255,492	693,110
MEDIAN HH INC	\$153,248	\$137,310	\$135,943
AVERAGE HH INC	\$209,101	\$187,287	\$187,051



CHARTER
REALTY

www.CharterRealty.com



FOR MORE INFORMATION CONTACT:

JEFF ARSENAULT | 781.771.9867 | JeffA@CharterRealty.com

ASHER ZELSON | 203.653.8186 | Asher@CharterRealty.com

EVERETT ZELSON | 203.614.1109 | Everett@CharterRealty.com

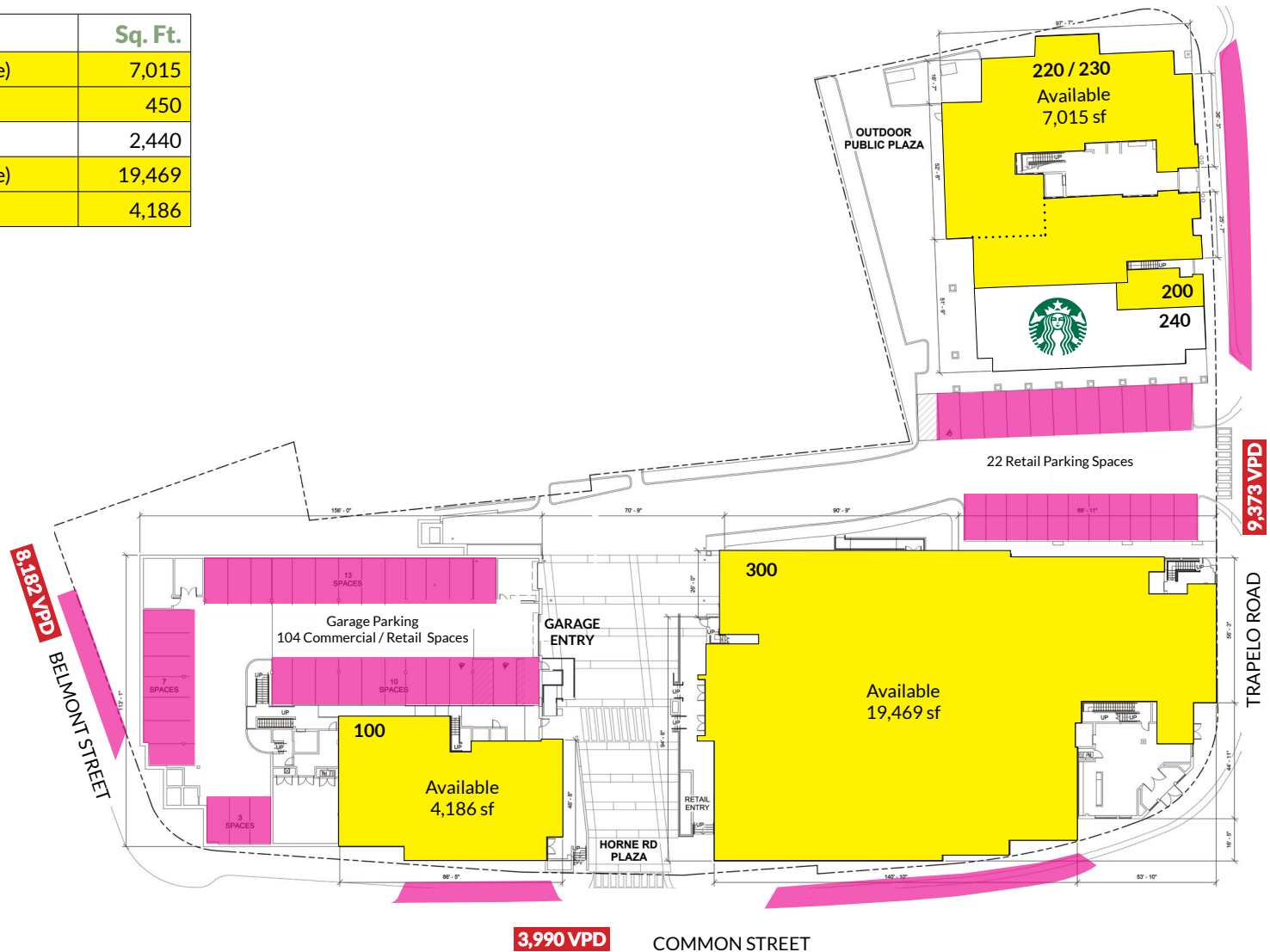
THE BRADFORD

485 COMMON STREET | BELMONT, MA 02478

TENANTS / AVAILABILITY

#	TENANT	Sq. Ft.
220/230	Available (Subdividable)	7,015
200	Available	450
240	Starbucks	2,440
300	Available (Subdividable)	19,469
100	Available	4,186

 Parking






CHARTER REALTY

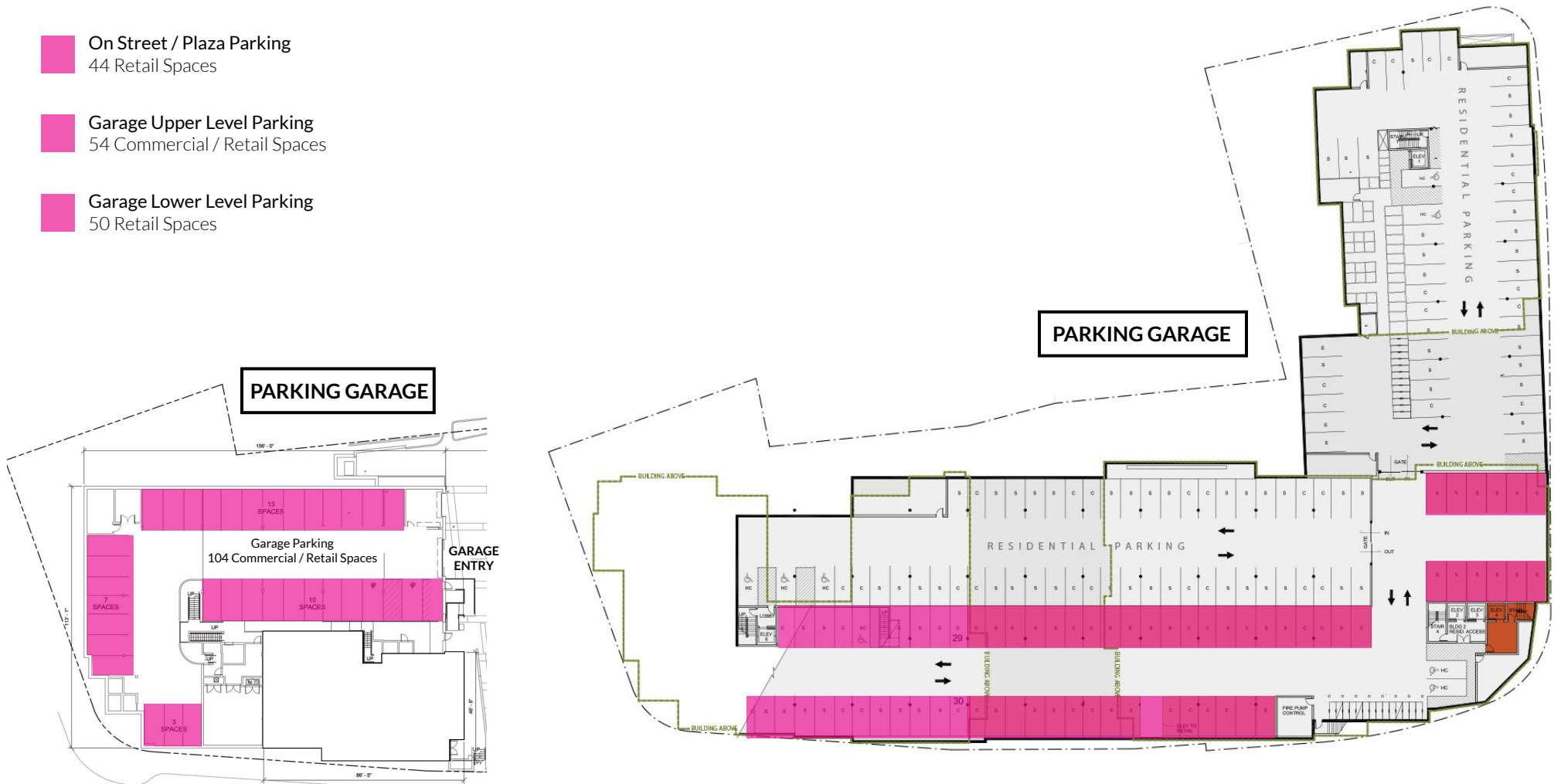
Information contained in this document has been reviewed and approved by Charter Realty; however, errors sometimes occur. Charter disclaims any warranty of any kind, expressed or implied, as to any matter whatsoever relating to this service. In no event shall Charter be liable for any indirect, special, incidental or consequential damages arising out of any use of or reliance on any content or materials contained herein.

THE BRADFORD

485 COMMON STREET | BELMONT, MA 02478

PARKING PLAN

-  On Street / Plaza Parking
44 Retail Spaces
-  Garage Upper Level Parking
54 Commercial / Retail Spaces
-  Garage Lower Level Parking
50 Retail Spaces



CHARTER REALTY

Information contained in this document has been reviewed and approved by Charter Realty; however, errors sometimes occur. Charter disclaims any warranty of any kind, expressed or implied, as to any matter whatsoever relating to this service. In no event shall Charter be liable for any indirect, special, incidental or consequential damages arising out of any use of or reliance on any content or materials contained herein.

THE BRADFORD

485 COMMON STREET | BELMONT, MA 02478



CHARTER REALTY

Information contained in this document has been reviewed and approved by Charter Realty; however, errors sometimes occur. Charter disclaims any warranty of any kind, expressed or implied, as to any matter whatsoever relating to this service. In no event shall Charter be liable for any indirect, special, incidental or consequential damages arising out of any use of or reliance on any content or materials contained herein.

THE BRADFORD

485 COMMON STREET | BELMONT, MA 02478

TRADE AREA DEMOGRAPHICS

1 MILE RADIUS:



Total Population: **30,733**

Households: **12,909**

Daytime Population: **12,601**

Median Age: **40.6**



Average Household Income: **\$209,101**

Median Household Income: **\$153,248**

3 MILE RADIUS:



Total Population: **255,492**

Households: **107,043**

Daytime Population: **178,154**

Median Age: **36.6**



Average Household Income: **\$187,287**

Median Household Income: **\$137,310**

5 MILE RADIUS:



Total Population: **693,110**

Households: **286,348**

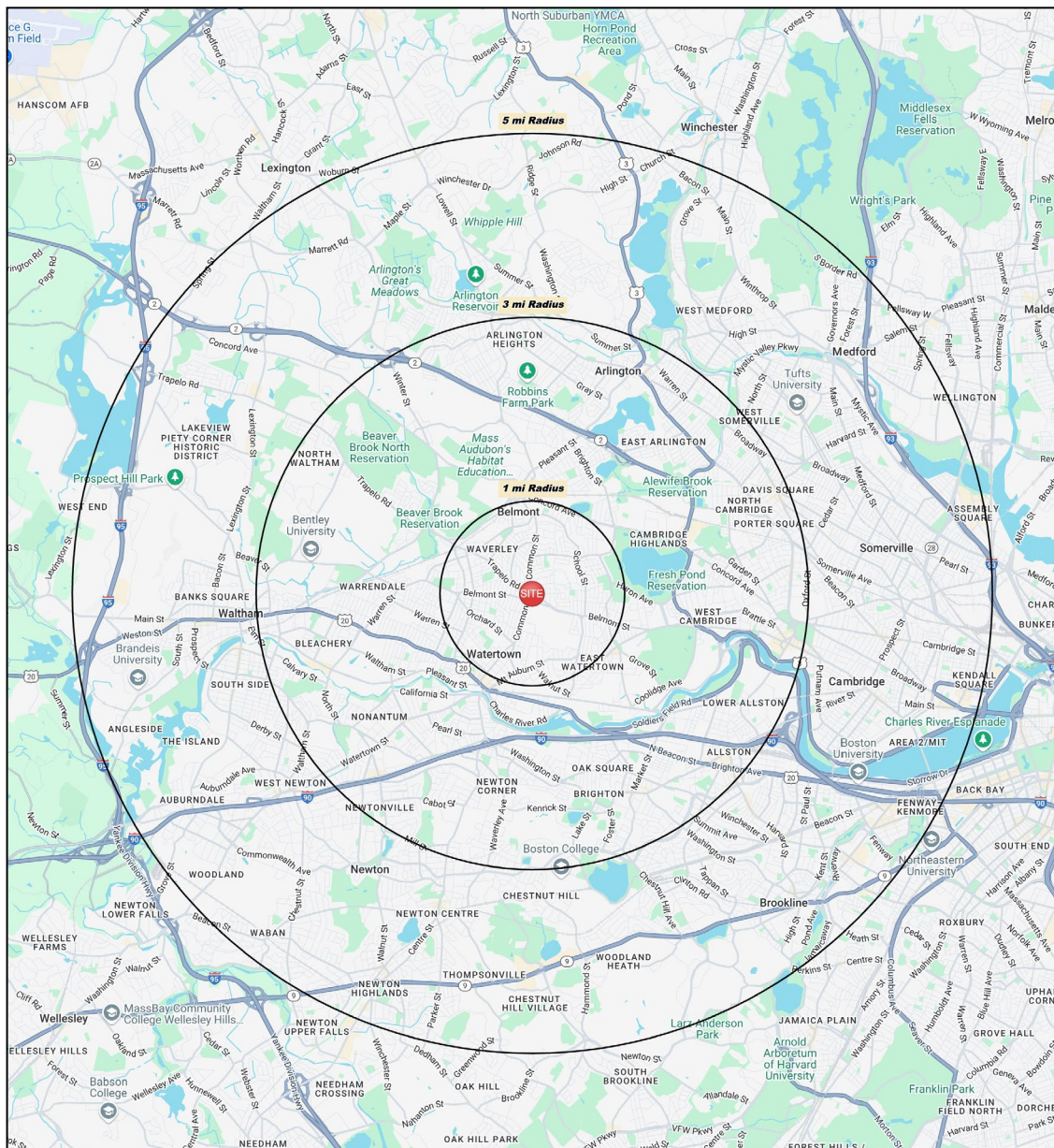
Daytime Population: **540,068**

Median Age: **35.2**



Average Household Income: **\$187,051**

Median Household Income: **\$135,943**

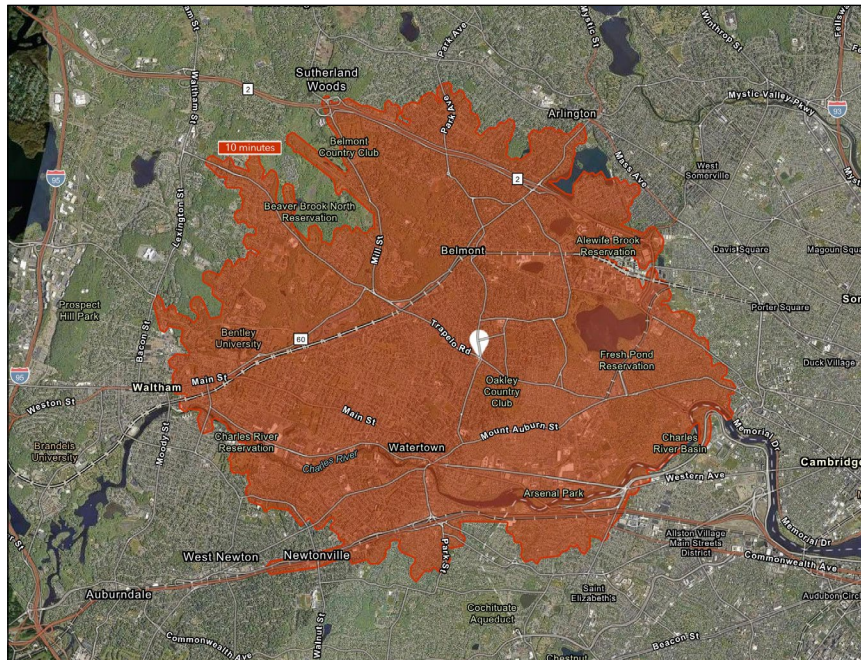


CHARTER REALTY

Information contained in this document has been reviewed and approved by Charter Realty; however, errors sometimes occur. Charter disclaims any warranty of any kind, expressed or implied, as to any matter whatsoever relating to this service. In no event shall Charter be liable for any indirect, special, incidental or consequential damages arising out of any use of or reliance on any content or materials contained herein.

THE BRADFORD

485 COMMON STREET | BELMONT, MA 02478



KEY FACTS

123,322

Population

38.5

Median Age

\$136,804

Median Household Income

127,170

Daytime Population

TAPESTRY SEGMENTS

Trendsetters

16,198 Households

Socioeconomic Traits

Residents are young and well educated; more than half have a bachelor's degree or more. Well paid, with little financial responsibility.

Household Types

Singles— living alone or with roommates or partners.

Typical Housing

High-Density Apartments

Urban Chic

11,430 Households

Socioeconomic Traits

Residents are employed in white-collar occupations—in managerial, technical, and legal positions. Well educated, more than 65% of residents hold a bachelor's degree or higher.

Household Types

More than half of the households include married couples; nearly 30% are singles.

Typical Housing

Single Family

Laptops & Lattes

6,840 Households

Socioeconomic Traits

Residents are predominantly single, well-educated professionals in business, finance, legal, computer, and entertainment occupations.

Household Types

Predominantly singles with low average household size of 1.87.

Typical Housing

High-Density Apartments

TOTAL RETAIL SALES

Includes F&B



\$2,143,255,916

EDUCATION

Bachelor's Degree
or Higher



72%

OWNER OCCUPIED HOME VALUE

Average



\$1,066,685

ANNUAL HOUSEHOLD SPENDING

\$6,620

Eating
Out

\$4,018

Apparel &
Services

\$11,845

Groceries

\$476

Computer &
Hardware

\$11,376

Health
Care

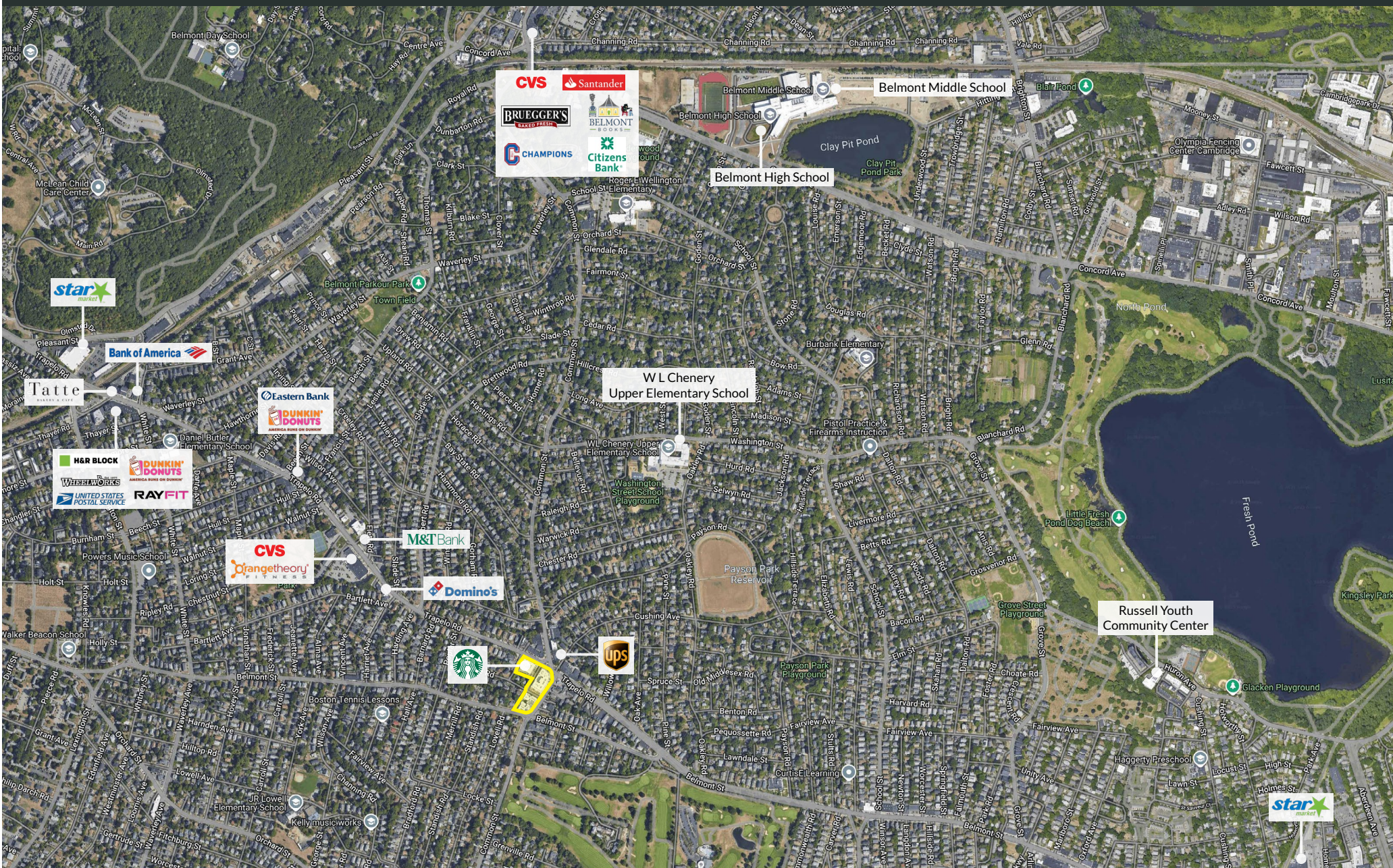


CHARTER REALTY

Information contained in this document has been reviewed and approved by Charter Realty; however, errors sometimes occur. Charter disclaims any warranty of any kind, expressed or implied, as to any matter whatsoever relating to this service. In no event shall Charter be liable for any indirect, special, incidental or consequential damages arising out of any use of or reliance on any content or materials contained herein.

THE BRADFORD

485 COMMON STREET | BELMONT, MA 02478



CHARTER REALTY

Information contained in this document has been reviewed and approved by Charter Realty; however, errors sometimes occur. Charter disclaims any warranty of any kind, expressed or implied, as to any matter whatsoever relating to this service. In no event shall Charter be liable for any indirect, special, incidental or consequential damages arising out of any use of or reliance on any content or materials contained herein.

THE BRADFORD

485 COMMON STREET | BELMONT, MA 02478



CHARTER REALTY

Information contained in this document has been reviewed and approved by Charter Realty; however, errors sometimes occur. Charter disclaims any warranty of any kind, expressed or implied, as to any matter whatsoever relating to this service. In no event shall Charter be liable for any indirect, special, incidental or consequential damages arising out of any use of or reliance on any content or materials contained herein.

THE BRADFORD

485 COMMON STREET | BELMONT, MA 02478



CHARTER REALTY

Information contained in this document has been reviewed and approved by Charter Realty; however, errors sometimes occur. Charter disclaims any warranty of any kind, expressed or implied, as to any matter whatsoever relating to this service. In no event shall Charter be liable for any indirect, special, incidental or consequential damages arising out of any use of or reliance on any content or materials contained herein.