

# LUDLOW PLAZA

433 CENTER STREET | LUDLOW, MA

**AVAILABLE 10,117 SF & 15,228 SF**

## AREA TENANTS

**Bank of America**



Experience the difference

**ROCKY'S**  
ACE Hardware

## PROPERTY INFORMATION

- Direct access and visibility to I-90 (Mass Pike) offering tremendous visibility and ease of access to daily commuters and regional shoppers.
- Recent and ongoing **housing development** is expanding the town's population and raising demand for retail, services, and food & beverage options.
- Many national and regional brands are **underrepresented**, creating opportunities to capture **first-mover advantage**.
- Strong community pride and local engagement support **repeat visits** and **brand loyalty** for well-positioned retailers and offer opportunities to integrate with local events or schools often see meaningful community support.

## SPACE DETAILS

- Available 10,117 sf & 15,228 sf

## AREA DEMOGRAPHICS

2025 DEMOGRAPHICS	1 MILE	3 MILE	5 MILE
POPULATION	9,915	40,764	98,079
MEDIAN HH INC	\$71,253	\$79,409	\$81,127
AVERAGE HH INC	\$91,639	\$103,577	\$103,792



www.CharterRealty.com



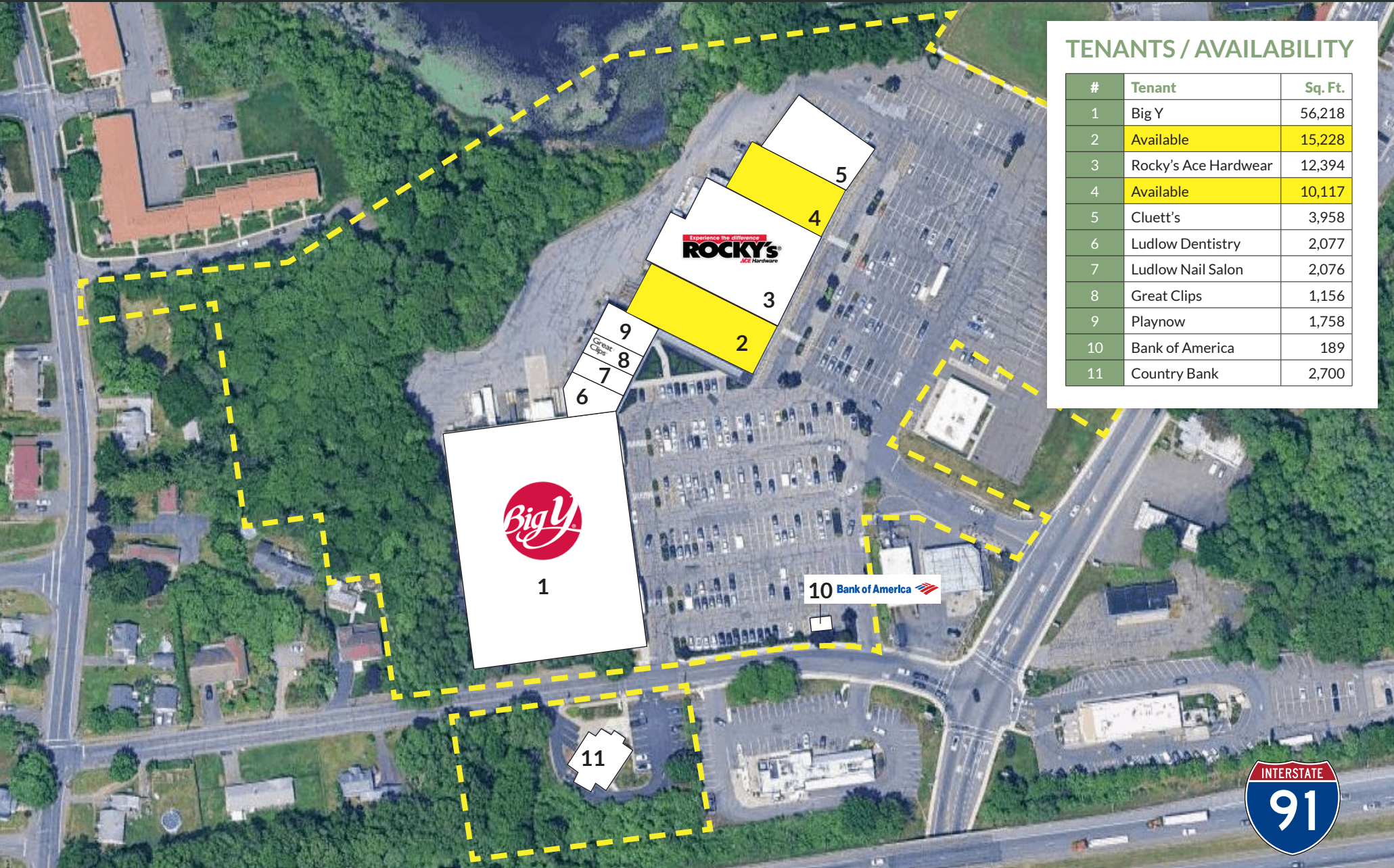
**FOR MORE INFORMATION CONTACT:**

**BRYAN FURZE** | 617.947.0428 | [Bryan@CharterRealty.com](mailto:Bryan@CharterRealty.com)



# LUDLOW PLAZA

433 CENTER STREET | LUDLOW, MA



## TENANTS / AVAILABILITY

#	Tenant	Sq. Ft.
1	Big Y	56,218
2	Available	15,228
3	Rocky's Ace Hardware	12,394
4	Available	10,117
5	Cluett's	3,958
6	Ludlow Dentistry	2,077
7	Ludlow Nail Salon	2,076
8	Great Clips	1,156
9	Playnow	1,758
10	Bank of America	189
11	Country Bank	2,700



# LUDLOW PLAZA

433 CENTER STREET | LUDLOW, MA

## TRADE AREA DEMOGRAPHICS

### 1 MILE RADIUS:



Total Population: **9,915**

Households: **4,419**

Daytime Population: **7,638**

Median Age: **44.2**



Average Household Income: **\$91,639**

Median Household Income: **\$71,253**

### 3 MILE RADIUS:



Total Population: **40,764**

Households: **16,541**

Daytime Population: **32,619**

Median Age: **41.8**



Average Household Income: **\$103,577**

Median Household Income: **\$79,409**

### 5 MILE RADIUS:



Total Population: **98,079**

Households: **39,397**

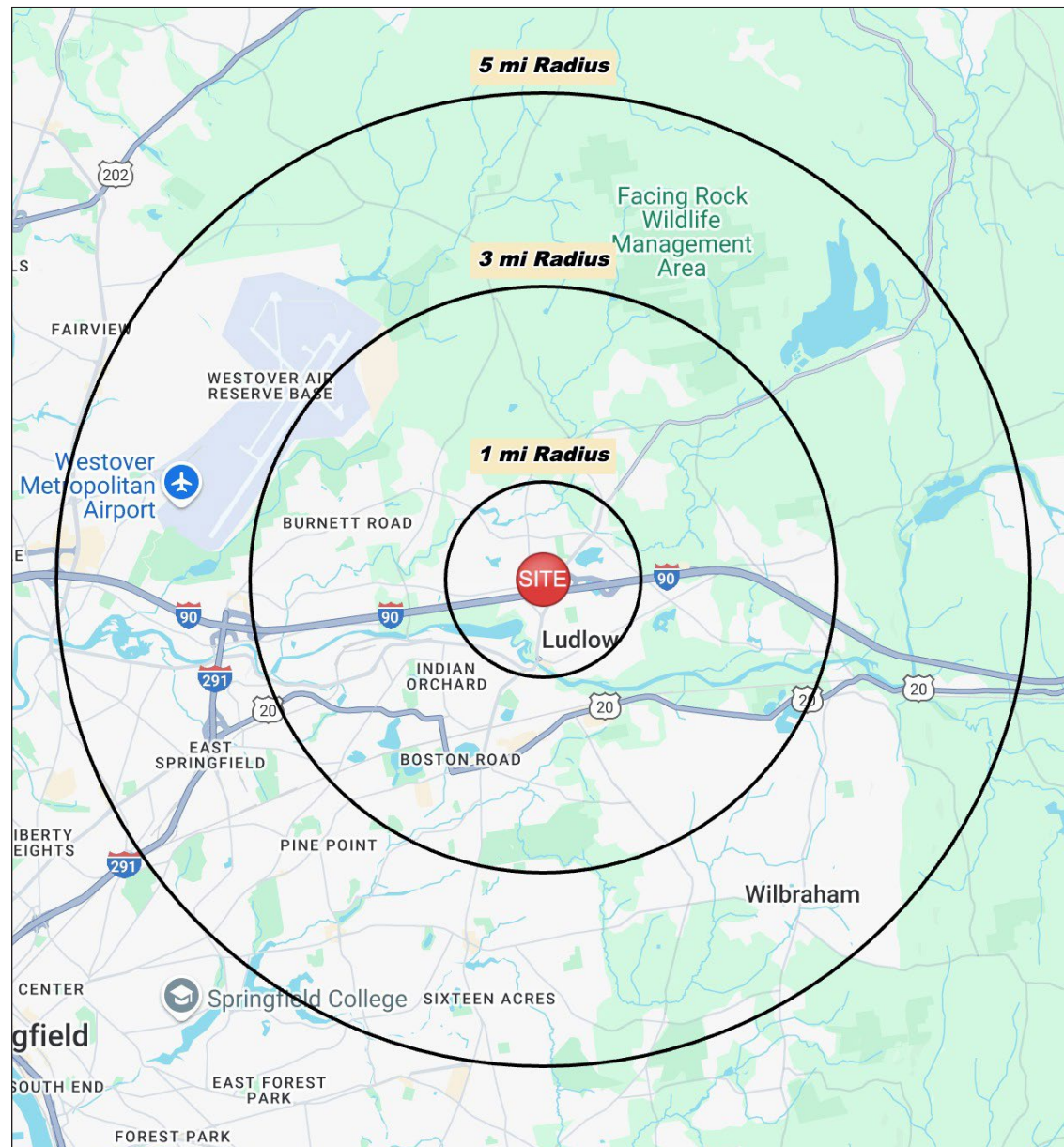
Daytime Population: **78,367**

Median Age: **40.8**



Average Household Income: **\$103,792**

Median Household Income: **\$81,127**



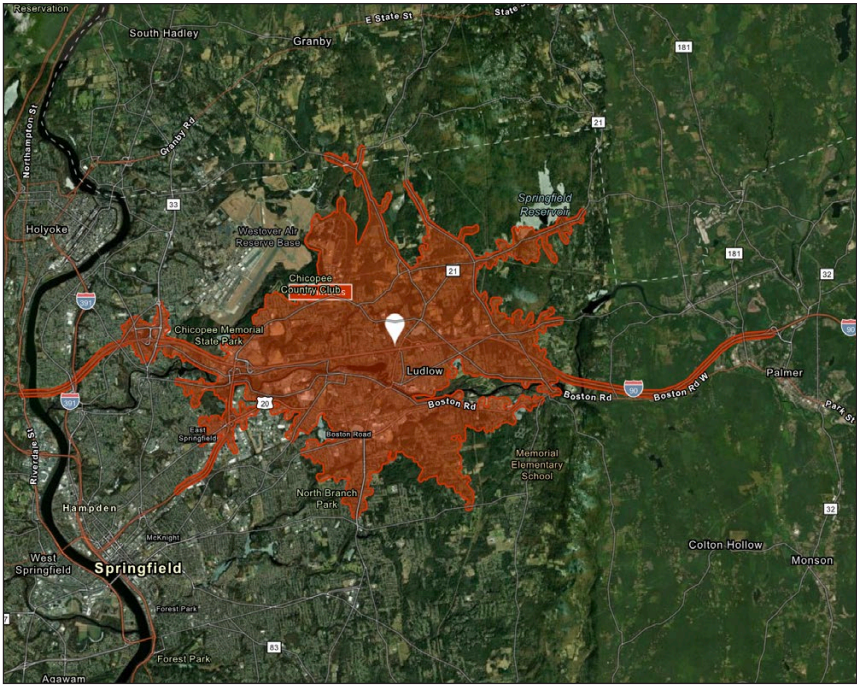
#### CHARTER REALTY

Information contained in this document has been reviewed and approved by Charter Realty; however, errors sometimes occur. Charter disclaims any warranty of any kind, expressed or implied, as to any matter whatsoever relating to this service. In no event shall Charter be liable for any indirect, special, incidental or consequential damages arising out of any use of or reliance on any content or materials contained herein.

# LUDLOW PLAZA

433 CENTER STREET | LUDLOW, MA

10 MINUTE DRIVE TIME



## KEY FACTS

40,397

Population

42.8

Median Age

\$69,580

Median Household Income

40,049

Daytime Population

## TAPESTRY SEGMENTS

Room to Roam

2,728 households

Dreambelt

2,490 households

Moderate Metros

1,820 households

### Socioeconomic Traits

Primarily in the Midwest and South, these metro-area communities feature older, married homeowners in single-family homes. Self-employment is common, with affordable housing, multiple vehicles, and commuting alone the norm.

### Socioeconomic Traits

These Western suburban neighborhoods house mostly middle-income, working couples aged 35–74. Homes are mid-century builds with ample parking. Residents commute alone, and most properties are valued between \$300K and \$500K.

### Socioeconomic Traits

In growing suburban areas, these young communities feature diverse households, including singles and families with young children. Residents earn middle incomes, work in service jobs, and live in modest, often pre-1990 single-family homes.

### Household Types

Married couples with no kids

### Household Types

Married couples

### Household Types

Married couples; singles living alone

### Typical Housing

Single Family

### Typical Housing

Single Family

### Typical Housing

Single Family

## ANNUAL HOUSEHOLD SPENDING

\$3,224

Eating Out

\$1,952

Apparel & Services

\$5,972

Groceries

\$181

Computer & Hardware

\$6,258

Health Care

## TOTAL RETAIL SALES

Includes F&B



\$354,027,800

## EDUCATION

Bachelor's Degree or Higher



25%

## OWNER OCCUPIED HOME VALUE

Average



\$424,285



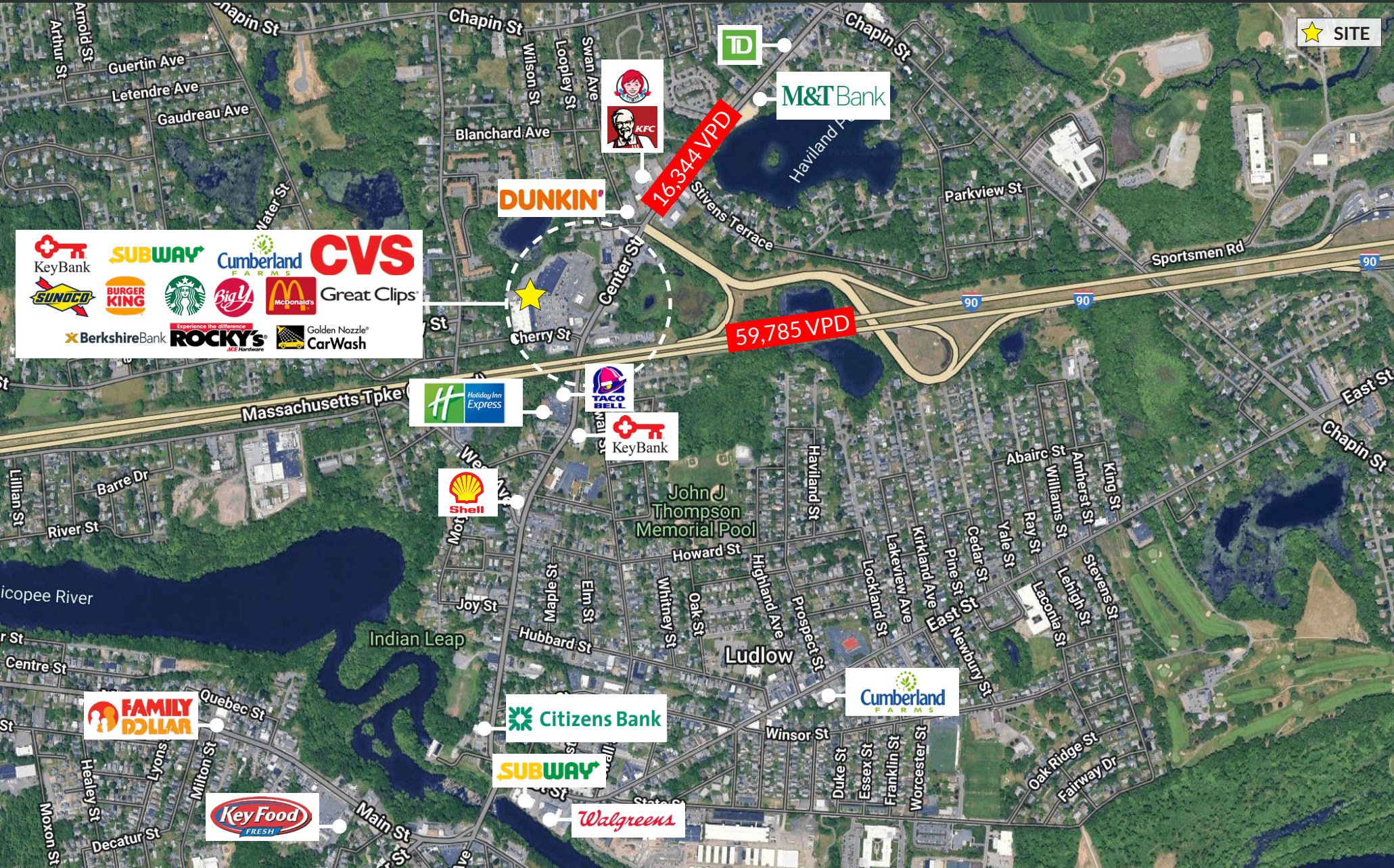
### CHARTER REALTY

Information contained in this document has been reviewed and approved by Charter Realty; however, errors sometimes occur. Charter disclaims any warranty of any kind, expressed or implied, as to any matter whatsoever relating to this service. In no event shall Charter be liable for any indirect, special, incidental or consequential damages arising out of any use of or reliance on any content or materials contained herein.



# LUDLOW PLAZA

433 CENTER STREET | LUDLOW, MA



**CHARTER REALTY**  
Information contained in this document has been reviewed and approved by Charter Realty; however, errors sometimes occur. Charter disclaims any warranty of any kind, expressed or implied, as to any matter whatsoever relating to this service. In no event shall Charter be liable for any indirect, special, incidental or consequential damages arising out of any use of or reliance on any content or materials contained herein.



# LUDLOW PLAZA

433 CENTER STREET | LUDLOW, MA



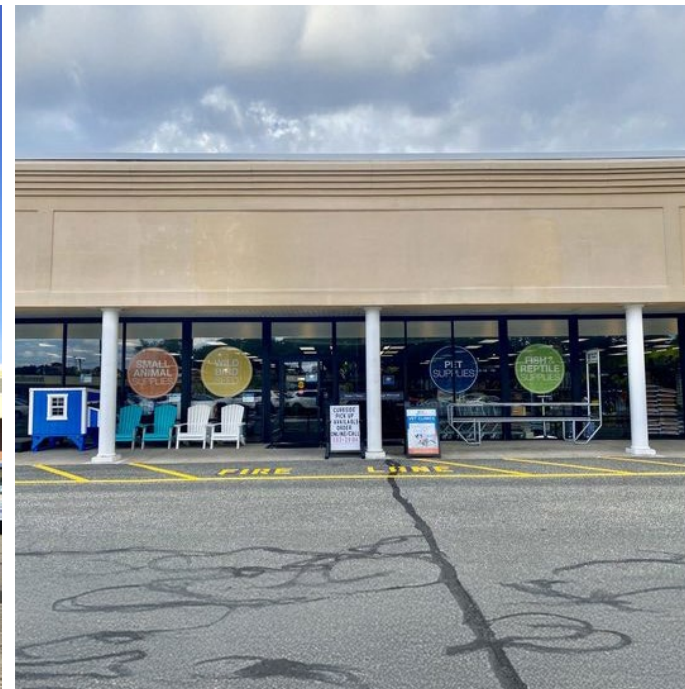
## CHARTER REALTY

Information contained in this document has been reviewed and approved by Charter Realty; however, errors sometimes occur. Charter disclaims any warranty of any kind, expressed or implied, as to any matter whatsoever relating to this service. In no event shall Charter be liable for any indirect, special, incidental or consequential damages arising out of any use of or reliance on any content or materials contained herein.



# LUDLOW PLAZA

433 CENTER STREET | LUDLOW, MA



## CHARTER REALTY

Information contained in this document has been reviewed and approved by Charter Realty; however, errors sometimes occur. Charter disclaims any warranty of any kind, expressed or implied, as to any matter whatsoever relating to this service. In no event shall Charter be liable for any indirect, special, incidental or consequential damages arising out of any use of or reliance on any content or materials contained herein.