

METRO SQUARE SHOPPING CENTER

130, 140, 170, 190, 200 MAIN STREET | MIDDLETOWN, CT 06457

AVAILABLE 1,300 - 36,806 SF & 1,112 SF WITH DRIVE-THRU

AREA TENANTS



Bank of America

AT&T



Wesleyan University

SPACE DETAILS

140 Main Street

- Available 2,605 sf - 5,555 sf
- Available 36,806 sf

170 Main Street

- Available 1,300 sf
- Available 2,342 sf

190 Main Street

- Available 1,112 sf with drive-thru

AREA DEMOGRAPHICS

2025 DEMOGRAPHICS	1 MILE	3 MILE	5 MILE
POPULATION	13,037	41,478	72,414
MEDIAN HH INC	\$54,621	\$77,663	\$92,384
AVERAGE HH INC	\$80,314	\$103,137	\$118,652



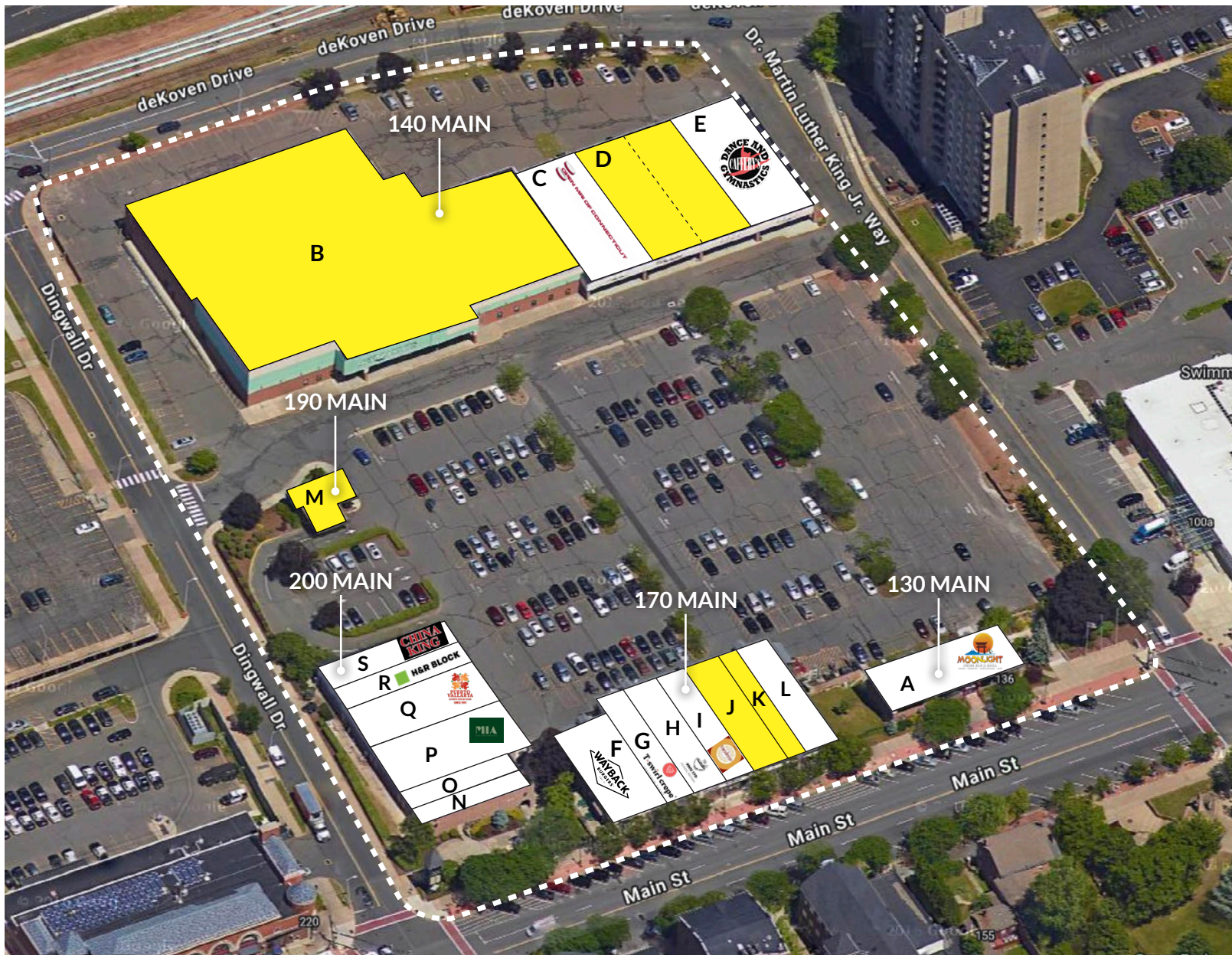
www.CharterRealty.com

FOR MORE INFORMATION CONTACT:

KERRY WOOD | 475-288-7040 | Kerry@CharterRealty.com

METRO SQUARE SHOPPING CENTER

140, 170, 190, 200 MAIN STREET | MIDDLETOWN, CT 06457



TENANTS / AVAILABILITY

130 MAIN STREET

#	TENANT	Sq. Ft.
A	Moonlight	-

140 MAIN STREET

B	Available	36,806 sf
C	Open MRI of Connecticut	-
D	Available	2,605 sf - 5,555 sf
E	Caffery's Dance and Gymnastic School	-

170 MAIN STREET

F	Wayback Burger	-
G	T-Swirl Crepes	-
H	Pho 170	-
I	Tandoor	-
J	Available	2,342 sf
K	Available	1,300 sf
L	M Town Wing	-

190 MAIN STREET

M	Available	1,112 sf with drive-thru
---	-----------	--------------------------

200 MAIN STREET

N	Mike's Barber Shop	-
O	-	-
P	Mia	-
Q	Puerto Vallarta	-
R	H&R Black	-
S	China King	-



CHARTER REALTY

Information contained in this document has been reviewed and approved by Charter Realty; however, errors sometimes occur. Charter disclaims any warranty of any kind, expressed or implied, as to any matter whatsoever relating to this service. In no event shall Charter be liable for any indirect, special, incidental or consequential damages arising out of any use of or reliance on any content or materials contained herein.

METRO SQUARE SHOPPING CENTER

130, 140, 170, 190, 200 MAIN STREET | MIDDLETOWN, CT 06457

TRADE AREA DEMOGRAPHICS

1 MILE RADIUS:



Total Population: **13,037**

Households: **4,836**

Daytime Population: **15,175**

Median Age: **33.1**



Average Household Income: **\$80,314**

Median Household Income: **\$54,621**

3 MILE RADIUS:



Total Population: **41,478**

Households: **16,945**

Daytime Population: **34,937**

Median Age: **40.1**



Average Household Income: **\$103,137**

Median Household Income: **\$77,663**

5 MILE RADIUS:



Total Population: **72,414**

Households: **30,668**

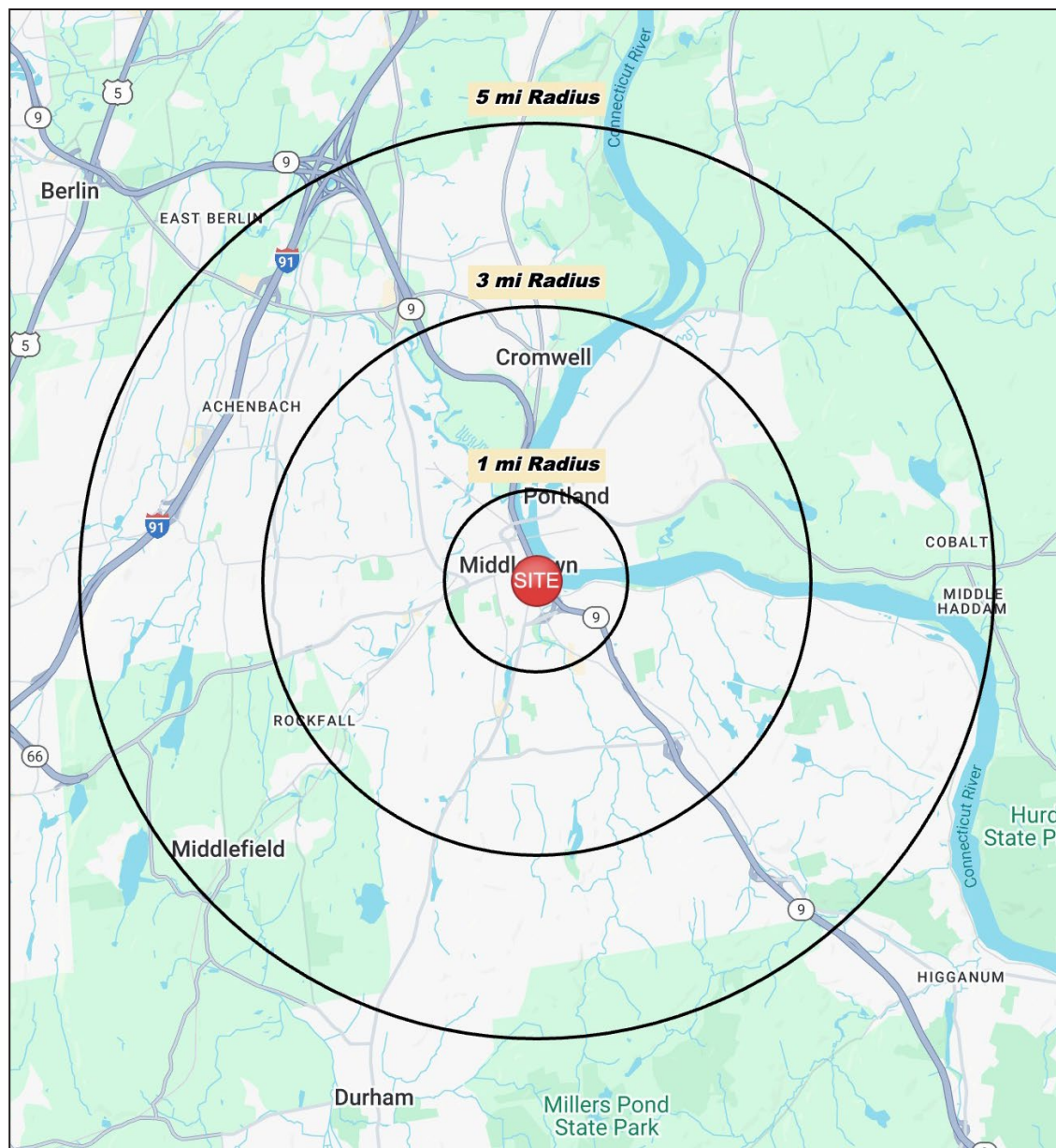
Daytime Population: **60,083**

Median Age: **41.1**



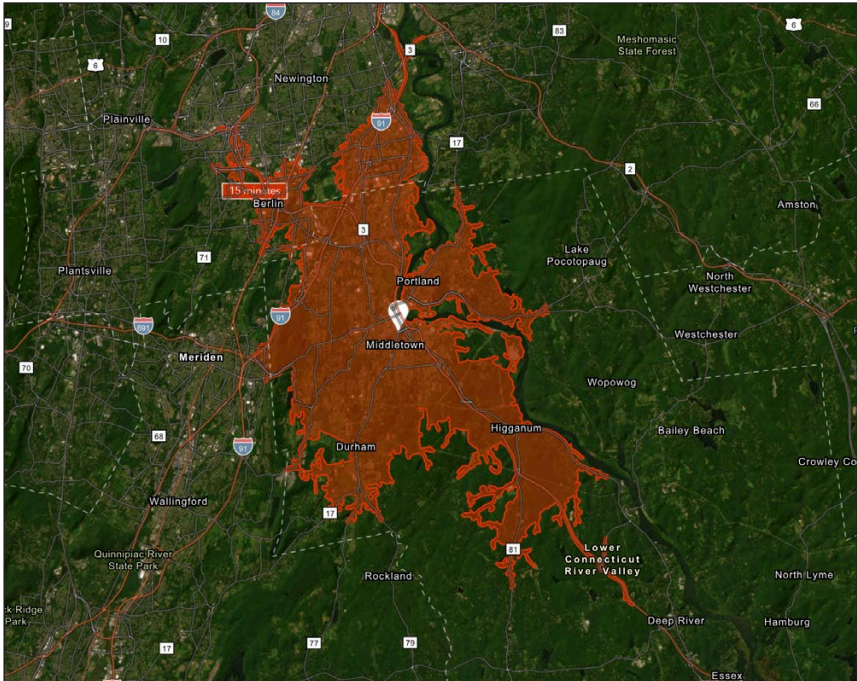
Average Household Income: **\$118,652**

Median Household Income: **\$92,384**



CHARTER REALTY

Information contained in this document has been reviewed and approved by Charter Realty; however, errors sometimes occur. Charter disclaims any warranty of any kind, expressed or implied, as to any matter whatsoever relating to this service. In no event shall Charter be liable for any indirect, special, incidental or consequential damages arising out of any use of or reliance on any content or materials contained herein.



KEY FACTS

104,782

Population

\$84,800

Median Household Income

42.3

Median Age

117,548

Daytime Population

TAPESTRY SEGMENTS

City Greens 7,437 households	Savvy Suburbanites 5,541t households	Room to Roam 5,038 households
<p>Socioeconomic Traits</p> <p>Residents in this segment are educated, dual-income earners living in metro areas. They own older homes, often single-family or attached, with low vacancies despite above-average rents and moderate home values.</p>	<p>Socioeconomic Traits</p> <p>Concentrated in New England and Mid-Atlantic suburbs, these mostly owner-occupied, single-family homes house professional families with children. Combined incomes and investments place households in middle to upper tiers with high net worth.</p>	<p>Socioeconomic Traits</p> <p>Primarily in the Midwest and South, these metro-area communities feature older, married homeowners in single-family homes. Self-employment is common, with affordable housing, multiple vehicles, and commuting alone the norm.</p>
<p>Household Types</p> <p>Married couples; singles living alone</p>	<p>Household Types</p> <p>Married couples</p>	<p>Household Types</p> <p>Married couples with no kids</p>
<p>Typical Housing</p> <p>Single Family</p>	<p>Typical Housing</p> <p>Single Family</p>	<p>Typical Housing</p> <p>Single Family</p>

TOTAL
RETAIL SALES

Includes F&B



\$1,187,920,572

EDUCATION

Bachelor's Degree
or Higher



43%

OWNER OCCUPIED
HOME VALUE

Average



\$464,582

ANNUAL HOUSEHOLD SPENDING

\$4,096

Eating
Out

\$2,475

Apparel &
Services

\$7,468

Groceries

\$234

Computer &
Hardware

\$7,738

Health
Care

METRO SQUARE SHOPPING CENTER

130, 140, 170, 190, 200 MAIN STREET | MIDDLETOWN, CT 06457



CHARTER REALTY

Information contained in this document has been reviewed and approved by Charter Realty; however, errors sometimes occur. Charter disclaims any warranty of any kind, expressed or implied, as to any matter whatsoever relating to this service. In no event shall Charter be liable for any indirect, special, incidental or consequential damages arising out of any use of or reliance on any content or materials contained herein.

METRO SQUARE SHOPPING CENTER

130, 140, 170, 190, 200 MAIN STREET | MIDDLETOWN, CT 06457

WITHIN WALKING DISTANCE TO
WESLEYAN UNIVERSITY



CHARTER REALTY
Information contained in this document has been reviewed and approved by Charter Realty; however, errors sometimes occur. Charter disclaims any warranty of any kind, expressed or implied, as to any matter whatsoever relating to this service. In no event shall Charter be liable for any indirect, special, incidental or consequential damages arising out of any use of or reliance on any content or materials contained herein.

METRO SQUARE SHOPPING CENTER

130, 140, 170, 190, 200 MAIN STREET | MIDDLETOWN, CT 06457

FORMER A&P SUPERMARKET
HAS STADIUM SEATING FOR 12 THEATRES

140 MAIN STREET - 2,605-36,806 SF

170 MAIN STREET: 1,300-2,565 SF

190 MAIN STREET - 1,112 SF WITH DRIVE-THRU

200 MAIN STREET: 1,791 SF

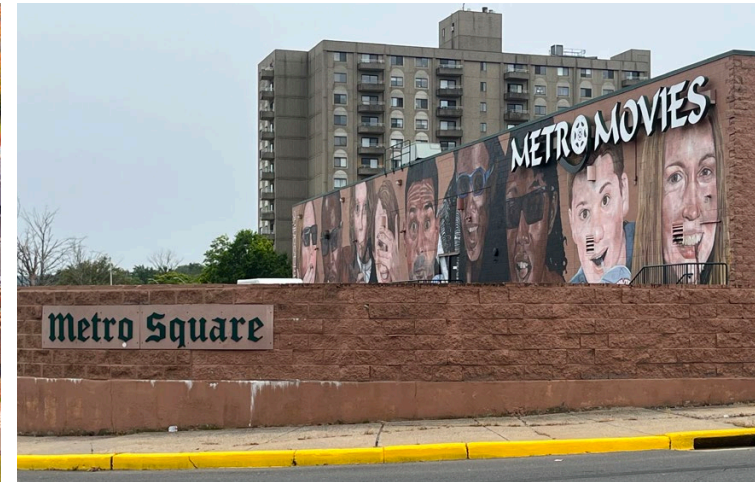


CHARTER REALTY

Information contained in this document has been reviewed and approved by Charter Realty; however, errors sometimes occur. Charter disclaims any warranty of any kind, expressed or implied, as to any matter whatsoever relating to this service. In no event shall Charter be liable for any indirect, special, incidental or consequential damages arising out of any use of or reliance on any content or materials contained herein.

METRO SQUARE SHOPPING CENTER

130, 140, 170, 190, 200 MAIN STREET | MIDDLETOWN, CT 06457



CHARTER REALTY

Information contained in this document has been reviewed and approved by Charter Realty; however, errors sometimes occur. Charter disclaims any warranty of any kind, expressed or implied, as to any matter whatsoever relating to this service. In no event shall Charter be liable for any indirect, special, incidental or consequential damages arising out of any use of or reliance on any content or materials contained herein.