

MILFORD SQUARE

1587 BOSTON POST ROAD | MILFORD, CT 06460

AVAILABLE 25,377 SF

CO-TENANTS

verizon

sleep number



Jersey Mike's Subs

PROPERTY INFORMATION

- Newly developed retail with abundant parking both in the front and rear of the center
- Milford Square sits between two traffic light intersections, and across from a Whole Foods anchored shopping center
- Multiple access / egress points
- Traffic: 31,004 vehicles per day

AVAILABLE SPACE

- 25,377 sf
- Available March 2027
- Abundant surface level and covered parking below

AREA DEMOGRAPHICS

2025 DEMOGRAPHICS	1 MILE	3 MILE	5 MILE
POPULATION	3,864	50,368	126,771
MEDIAN HH INC	\$114,316	\$122,352	\$104,540
AVERAGE HH INC	\$151,166	\$154,534	\$131,291



CHARTER
REALTY

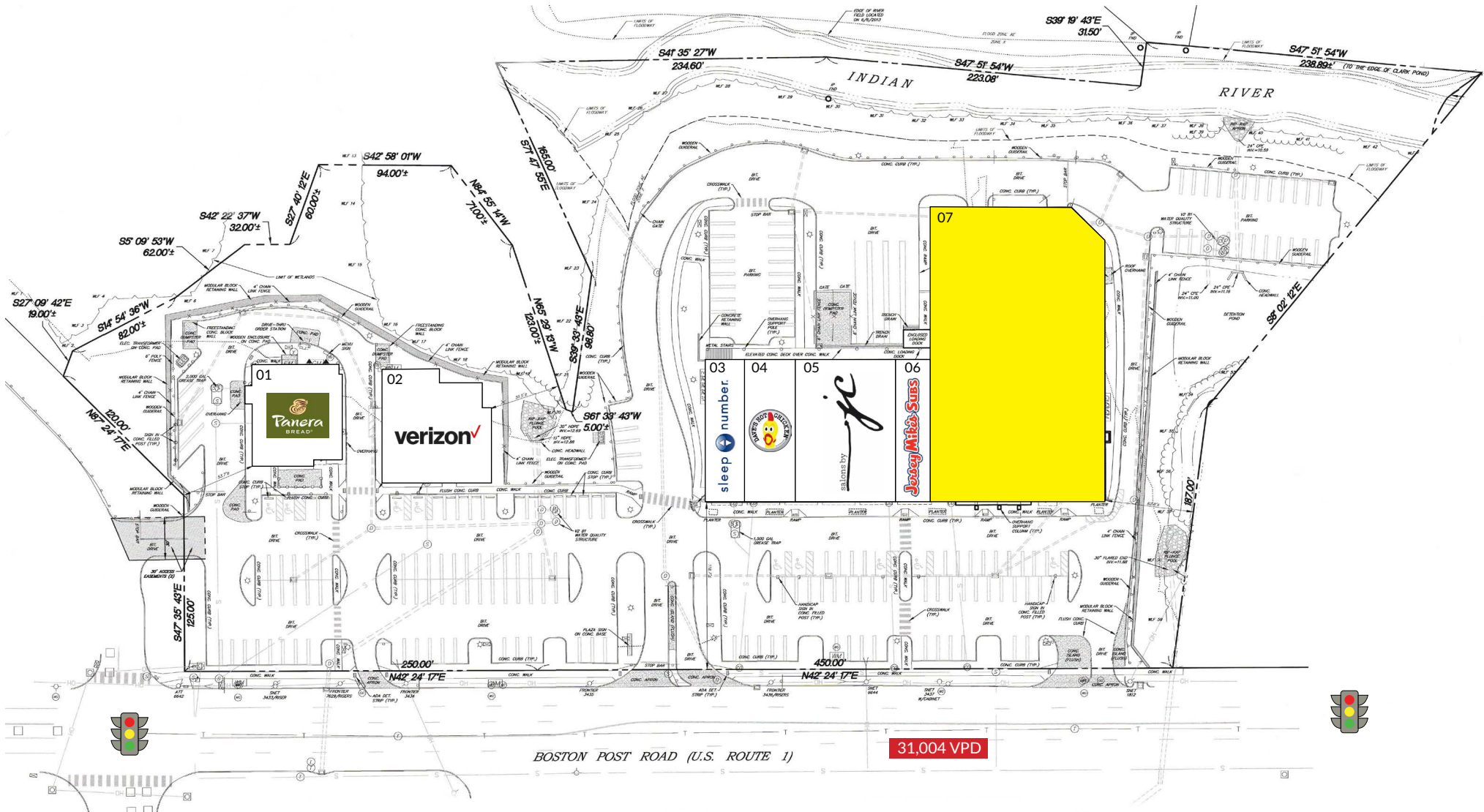
www.CharterRealty.com

FOR MORE INFORMATION CONTACT:

PETER H. LEVINE | 203.683.1567 | Peter@CharterRealty.com

MILFORD SQUARE

1587 BOSTON POST ROAD | MILFORD, CT 06460



CHARTER REALTY
Information contained in this document has been reviewed and approved by Charter Realty; however, errors sometimes occur. Charter disclaims any warranty of any kind, expressed or implied, as to any matter whatsoever relating to this service. In no event shall Charter be liable for any indirect, special, incidental or consequential damages arising out of any use of or reliance on any content or materials contained herein.

MILFORD SQUARE

1587 BOSTON POST ROAD | MILFORD, CT 06460

TRADE AREA DEMOGRAPHICS

1 MILE RADIUS:



Total Population: **3,864**

Households: **1,697**

Daytime Population: **7,969**

Median Age: **46.4**



Average Household Income: **\$151,166**

Median Household Income : **\$114,316**

3 MILE RADIUS:



Total Population: **50,368**

Households: **21,016**

Daytime Population: **49,712**

Median Age: **43.6**



Average Household Income: **\$154,534**

Median Household Income : **\$122,352**

5 MILE RADIUS:



Total Population: **126,771**

Households: **51,870**

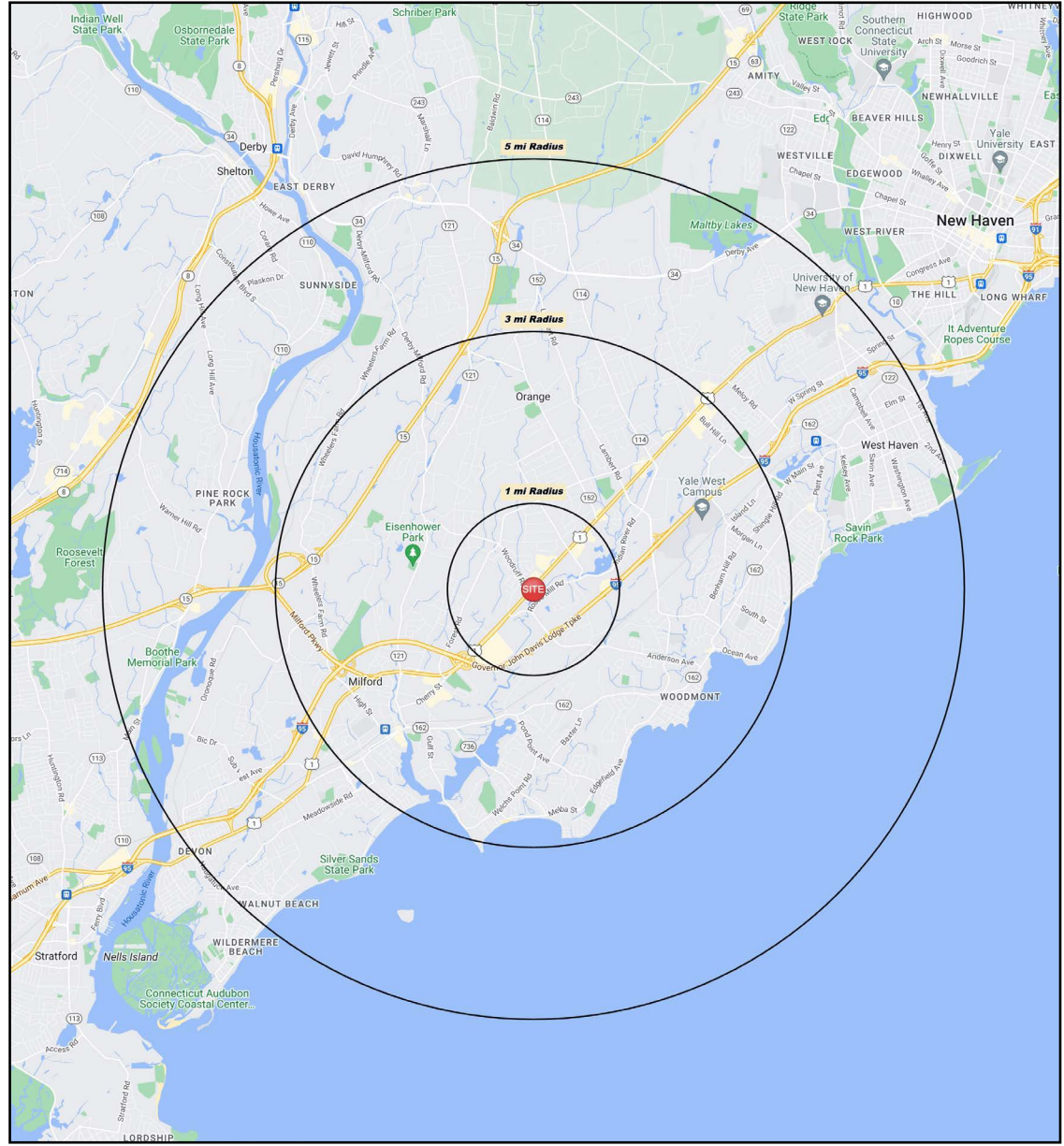
Daytime Population: **101,218**

Median Age: **41.0**



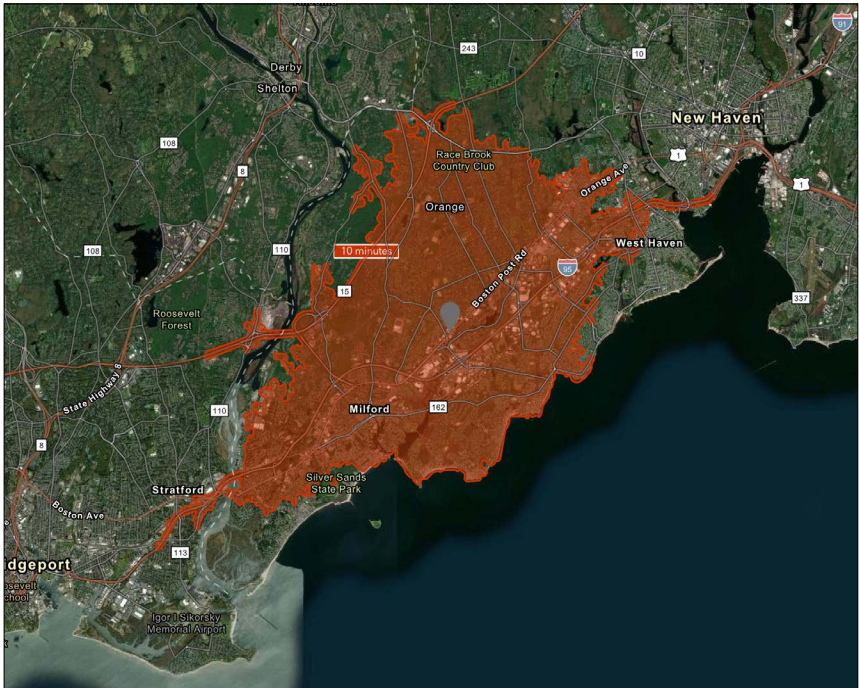
Average Household Income: **\$131,291**

Median Household Income : **\$104,540**



CHARTER REALTY

Information contained in this document has been reviewed and approved by Charter Realty; however, errors sometimes occur. Charter disclaims any warranty of any kind, expressed or implied, as to any matter whatsoever relating to this service. In no event shall Charter be liable for any indirect, special, incidental or consequential damages arising out of any use of or reliance on any content or materials contained herein.



KEY FACTS

72,876

Population

\$98,665

Median Household Income

45.0

Median Age

81,946

Daytime Population

TAPESTRY SEGMENTS

Pleasantville

5,300 households

Parks & Rec

4,091 households

Savvy Suburbanites

3,747 households

Socioeconomic Traits

66% college educated. Higher labor force participation rate. Many professionals in finance, information/ technology, education, or management.

Socioeconomic Traits

More than half of the population is college educated. This is a financially shrewd market with a diverse workforce.

Socioeconomic Traits

Residents are well educated, well read, and well capitalized. Families include empty nesters. Higher labor force participation rate at 67.9%.

Household Types

Older married-couple families, more w/o children under 18, but many w/ children over 18 years

Household Types

Married couples, approaching retirement age.

Household Types

Married couples with no children or older children; average household size is 2.85.

Typical Housing

Single Family

Typical Housing

Single Family

Typical Housing

Single Family

ANNUAL HOUSEHOLD SPENDING

\$4,387

Eating Out

\$2,639

Apparel & Services

\$8,108

Groceries

\$309

Computer & Hardware

\$8,623

Health Care

TOTAL RETAIL SALES

Includes F&B



\$845,952,043

EDUCATION

Bachelor's Degree or Higher



46%

OWNER OCCUPIED HOME VALUE

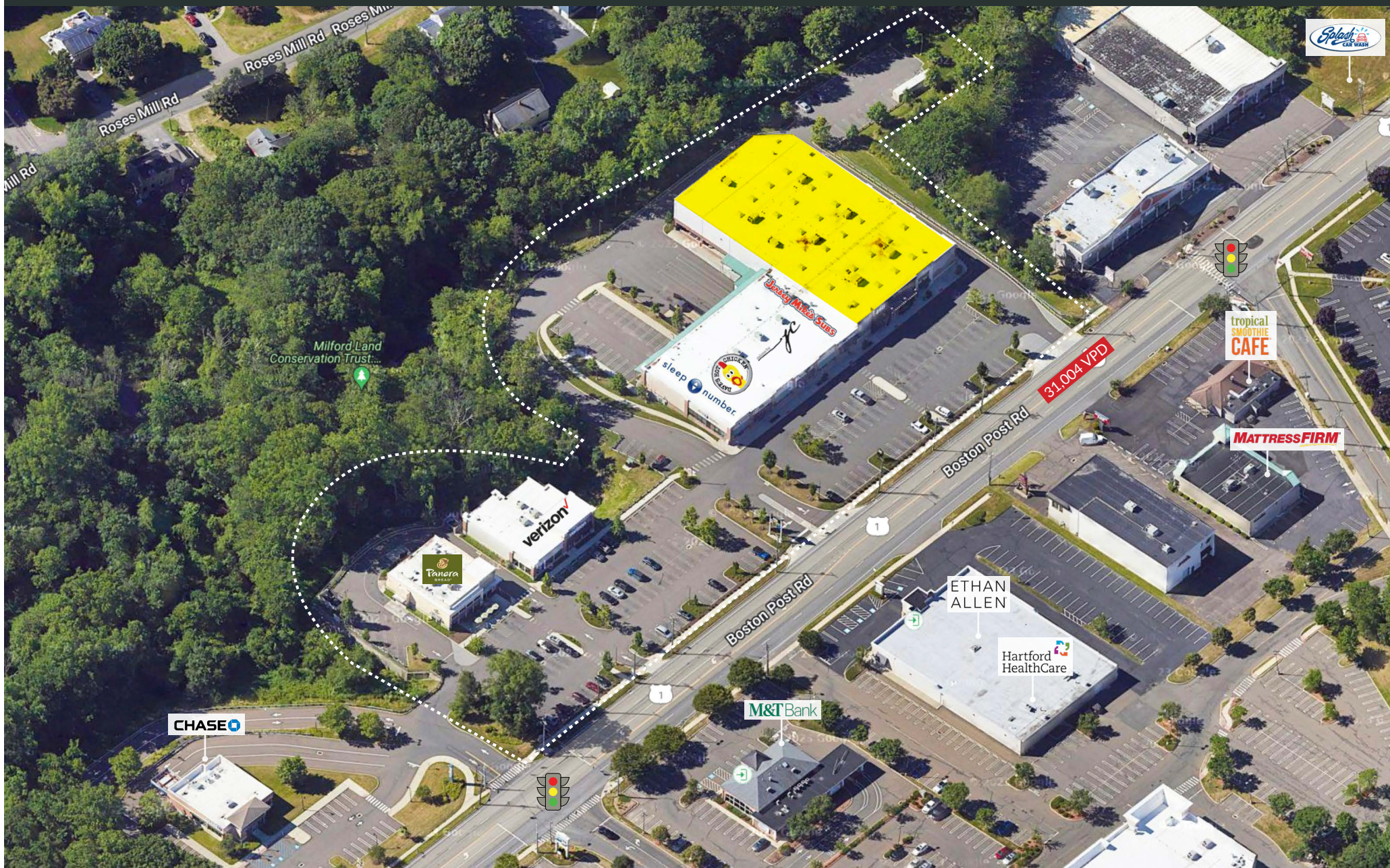
Average



\$408,283

MILFORD SQUARE

1587 BOSTON POST ROAD | MILFORD, CT 06460



CHARTER REALTY

Information contained in this document has been reviewed and approved by Charter Realty; however, errors sometimes occur. Charter disclaims any warranty of any kind, expressed or implied, as to any matter whatsoever relating to this service. In no event shall Charter be liable for any indirect, special, incidental or consequential damages arising out of any use of or reliance on any content or materials contained herein.

MILFORD SQUARE

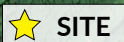
1587 BOSTON POST ROAD | MILFORD, CT 06460



CHARTER REALTY
Information contained in this document has been reviewed and approved by Charter Realty; however, errors sometimes occur. Charter disclaims any warranty of any kind, expressed or implied, as to any matter whatsoever relating to this service. In no event shall Charter be liable for any indirect, special, incidental or consequential damages arising out of any use of or reliance on any content or materials contained herein.

MILFORD SQUARE

1587 BOSTON POST ROAD | MILFORD, CT 06460



SITE



CHARTER REALTY

Information contained in this document has been reviewed and approved by Charter Realty; however, errors sometimes occur. Charter disclaims any warranty of any kind, expressed or implied, as to any matter whatsoever relating to this service. In no event shall Charter be liable for any indirect, special, incidental or consequential damages arising out of any use of or reliance on any content or materials contained herein.